

Recombinant Human PDCD6/ALG-2 protein ab104605

1 图像

描述	
产品名称	重组人PDCD6/ALG-2蛋白
纯度	> 95 % SDS-PAGE. ab104605 is purified using conventional chromatography techniques.
表达系统	Escherichia coli
Accession	<u>O75340</u>
蛋白长度	Full length protein
无动物成分	No
性质	Recombinant
种属	Human
序列	MGSSHHHHHHSSGLVPRGSHMAAYSYPGPGAGPGAAGA ALPDQSFLWN VFQRVDKDRSGVISDTELQQALSNGTWTPFNPVTVRSIISMF DRENKAGV NFSEFTGVWKYITDWQNVFRTYDRDNSGMIDKNELKQALSGF GYRLSDQF HDILIRKFDRQGRGQIAFDDFIQGCIVLQRLTDIFRRYDTDQ DGWIQVSY EQYLSMVFSIV
预测分子量	24 kDa including tags
氨基酸	1 to 191
标签	His tag N-Terminus

技术指标	
Our <b>Abpromise guarantee</b> covers the use of <b>ab104605</b> in the following tested applications.	
The application notes include recommended starting dilutions; optimal dilutions/concentrations should be determined by the end user.	
应用	SDS-PAGE Mass Spectrometry
质谱法	MALDI-TOF
形式	Liquid
补充说明	Previously labelled as PDCD6.

## 制备和贮存

### 稳定性和存储

Shipped at 4°C. Upon delivery aliquot and store at -20°C or -80°C. Avoid repeated freeze / thaw cycles.

pH: 3.50

Constituents: 0.294% Sodium citrate, 40% Glycerol (glycerin, glycerine)

## 常规信息

### 功能

Calcium-binding protein required for T-cell receptor-, Fas-, and glucocorticoid-induced cell death. May mediate Ca(2+)-regulated signals along the death pathway (By similarity). Calcium-dependent adapter necessary for the association between PDCCD6IP and TSG101. Interaction with DAPK1 can accelerate apoptotic cell death by increasing caspase-3 activity. May inhibit KDR/VEGFR2-dependent angiogenesis; the function involves inhibition of VEGF-induced phosphoprylation of the Akt signaling pathway. Seems to play a role in the regulation of the distribution and function of MCOLN1 in the endosomal pathway. Isoform 2 has a lower Ca(2+) affinity than isoform 1. Isoform 1 and, to a lesser extend, isoform 2, can stabilize SHISA5.

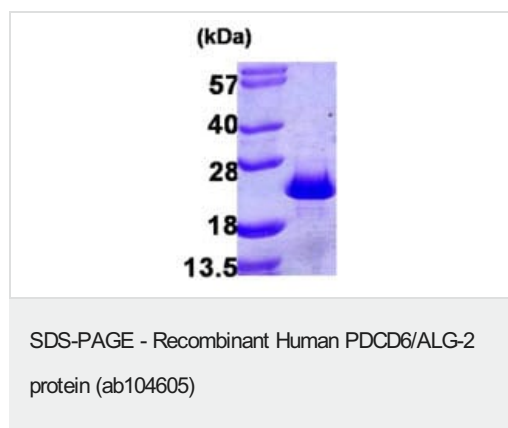
### 序列相似性

Contains 5 EF-hand domains.

### 细胞定位

Nucleus membrane. Endoplasmic reticulum membrane. Nucleus. Endosome. Interaction with RBM22 induces relocalization from the cytoplasm to the nucleus. Translocated from the cytoplasm to the nucleus after heat shock cell treatment. Accumulates in cytoplasmic vesicle-like organelles after heat shock treatment, which may represent stress granules.

## 图片



15% SDS-PAGE showing ab104605 (3 µg) at approximately 24 kDa.

**Please note:** All products are "FOR RESEARCH USE ONLY. NOT FOR USE IN DIAGNOSTIC PROCEDURES"

## Our Abpromise to you: Quality guaranteed and expert technical support

- Replacement or refund for products not performing as stated on the datasheet
- Valid for 12 months from date of delivery
- Response to your inquiry within 24 hours
- We provide support in Chinese, English, French, German, Japanese and Spanish

- Extensive multi-media technical resources to help you
- We investigate all quality concerns to ensure our products perform to the highest standards

If the product does not perform as described on this datasheet, we will offer a refund or replacement. For full details of the Abpromise, please visit <https://www.abcam.cn/abpromise> or contact our technical team.

#### **Terms and conditions**

---

- Guarantee only valid for products bought direct from Abcam or one of our authorized distributors