

Recombinant Human PAR6 protein ab132012

1 图像

描述	
产品名称	重组人PAR6蛋白
表达系统	Wheat germ
Accession	<u>Q9NPB6-2</u>
蛋白长度	Full length protein
无动物成分	No
性质	Recombinant
种属	Human
序列	MARPQRTPARSPDSIVEVKSKFDAEFRRFALPRASVSGFQEF SRLLRAVH QIPGLDVLLGYTDAHGDLLPLTNDDSLHRALASGPPPLRLLV QKREADSS GLAFASNSLQRRKKGLLLLRPVAPLRTRPPLLISLPQDFRQVS SVIDVDLL PETHRRVRLHKHGS DRPLGFYIRDGMSVRVAPQGLERVPGIF ISRLVRGG LAESTGLLAVSDEILEVNGIEVAGKTL DQVT DMMVANSHNLI VTVK PANQ RNNVVRGASGRLTGPPSAGPGAEPDSDDDSSDLVIENRQPP SSNGLSQG PPCWDLHPGCRHPGTRSSLPSLDDQEQASSGWGSRIRGDGSG FSL
预测分子量	64 kDa including tags
氨基酸	1 to 345

技术指标	
Our <b>Abpromise guarantee</b> covers the use of <b>ab132012</b> in the following tested applications.	
The application notes include recommended starting dilutions; optimal dilutions/concentrations should be determined by the end user.	
应用	ELISA  SDS-PAGE  Western blot
形式	Liquid

## 制备和贮存

### 稳定性和存储

Shipped on dry ice. Upon delivery aliquot and store at -80°C. Avoid freeze / thaw cycles.

pH: 8.00

Constituents: 0.31% Glutathione, 0.79% Tris HCl

## 常规信息

### 功能

Adapter protein involved in asymmetrical cell division and cell polarization processes. Probably involved in the formation of epithelial tight junctions. Association with PARD3 may prevent the interaction of PARD3 with F11R/JAM1, thereby preventing tight junction assembly. The PARD6-PARD3 complex links GTP-bound Rho small GTPases to atypical protein kinase C proteins.

### 组织特异性

Expressed in pancreas, skeletal muscle, brain and heart. Weakly expressed in kidney and placenta.

### 序列相似性

Belongs to the PAR6 family.

Contains 1 OPR domain.

Contains 1 PDZ (DHR) domain.

Contains 1 pseudo-CRIB domain.

### 结构域

The pseudo-CRIB domain together with the PDZ domain is required for the interaction with Rho small GTPases.

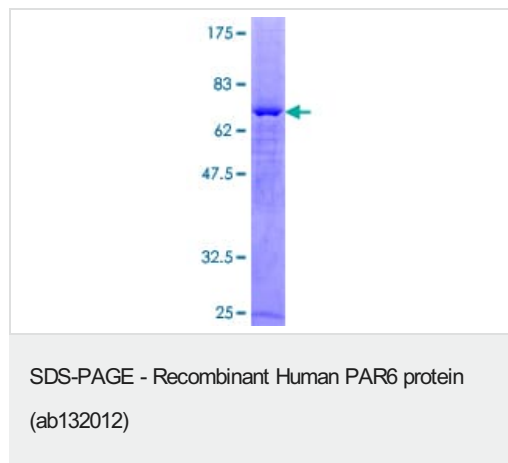
The OPR domain mediates interactions with MAP2K5.

The PDZ domain mediates the interaction with CRB3.

### 细胞定位

Cytoplasm. Cell membrane. Cell projection > ruffle. Cell junction > tight junction. Colocalizes with GTP-bound CDC42 or RAC1 at membrane ruffles and with PARD3 and PRKCI at epithelial tight junctions.

## 图片



12.5% SDS-PAGE stained with Coomassie Blue showing ab132012 at approximately 63.7 kDa.

**Please note:** All products are "FOR RESEARCH USE ONLY. NOT FOR USE IN DIAGNOSTIC PROCEDURES"

**Our Abpromise to you: Quality guaranteed and expert technical support**

- Replacement or refund for products not performing as stated on the datasheet
- Valid for 12 months from date of delivery
- Response to your inquiry within 24 hours
- We provide support in Chinese, English, French, German, Japanese and Spanish
- Extensive multi-media technical resources to help you
- We investigate all quality concerns to ensure our products perform to the highest standards

If the product does not perform as described on this datasheet, we will offer a refund or replacement. For full details of the Abpromise, please visit <https://www.abcam.cn/abpromise> or contact our technical team.

#### **Terms and conditions**

---

- Guarantee only valid for products bought direct from Abcam or one of our authorized distributors