

Recombinant Human PACE4 protein ab114961

1 图像

描述

产品名称	重组人PACE4蛋白
表达系统	Wheat germ
Accession	<u>P29122-1</u>
蛋白长度	Protein fragment
无动物成分	No
性质	Recombinant
种属	Human
序列	REECIHCAKNFHFHDWKVCPACGEGFYPEEMPGLPHKVCRRCDENCLSCAGSSRNCSRCKTGFTQLGTSCITNHTCSNADETFCEMVKSRLCERKLFIQ FCCRTCLLAG
预测分子量	38 kDa including tags
氨基酸	860 to 969

技术指标

Our **Abpromise guarantee** covers the use of **ab114961** in the following tested applications.

The application notes include recommended starting dilutions; optimal dilutions/concentrations should be determined by the end user.

应用	ELISA SDS-PAGE Western blot
形式	Liquid

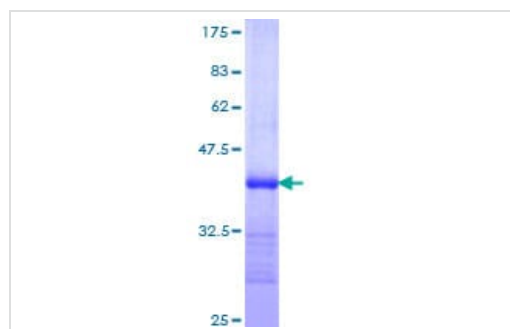
制备和贮存

稳定性和存储	Shipped on dry ice. Upon delivery aliquot and store at -80°C. Avoid freeze / thaw cycles. pH: 8.00 Constituents: 0.3% Glutathione, 0.79% Tris HCl
--------	---

常规信息

功能	Likely to represent an endoprotease activity within the constitutive secretory pathway, with unique restricted distribution in both neuroendocrine and non-neuroendocrine tissues and capable of cleavage at the RX(K/R)R consensus motif.
组织特异性	Each PACE4 isoform exhibits a unique restricted distribution. Isoform PACE4A-I is expressed in heart, brain, placenta, lung, skeletal muscle, kidney, pancreas, but at comparatively higher levels in the liver. Isoform PACE4A-II is at least expressed in placenta. Isoform PACE4B was only found in the embryonic kidney cell line from which it was isolated. Isoform PACE4C and isoform PACE4D are expressed in placenta. Isoform PACE4E-I is expressed in cerebellum, placenta and pituitary. Isoform PACE4E-II is at least present in cerebellum.
序列相似性	Belongs to the peptidase S8 family. Contains 1 homo B/P domain. Contains 1 PLAC domain.
结构域	The propeptide domain acts as an intramolecular chaperone assisting the folding of the zymogen within the endoplasmic reticulum. Isoform PACE4D lacks the propeptide domain.
细胞定位	Secreted; Endomembrane system. Retained intracellularly probably through a hydrophobic cluster in their C-terminus and Endoplasmic reticulum. Not secreted, remains probably in zymogen form in endoplasmic reticulum.

图片



12.5% SDS-PAGE showing ab114961 at approximately 37.73kDa.
Stained with Coomassie Blue.

SDS-PAGE - Recombinant Human PACE4 protein
(ab114961)

Please note: All products are "FOR RESEARCH USE ONLY. NOT FOR USE IN DIAGNOSTIC PROCEDURES"

Our Abpromise to you: Quality guaranteed and expert technical support

- Replacement or refund for products not performing as stated on the datasheet
- Valid for 12 months from date of delivery
- Response to your inquiry within 24 hours
- We provide support in Chinese, English, French, German, Japanese and Spanish
- Extensive multi-media technical resources to help you
- We investigate all quality concerns to ensure our products perform to the highest standards

If the product does not perform as described on this datasheet, we will offer a refund or replacement. For full details of the Abpromise, please visit <https://www.abcam.cn/abpromise> or contact our technical team.

Terms and conditions

- Guarantee only valid for products bought direct from Abcam or one of our authorized distributors