

Recombinant human P4HB protein (His tag) ab206803

1 图像

描述	
产品名称	重组人P4HB蛋白(His tag)
生物活性	> 100 A <sub>650</sub> /cm/min/mg. Enzymatic activity was confirmed by measuring the aggregation of insulin in the presence of DTT.
纯度	> 90 % SDS-PAGE.
表达系统	Escherichia coli
Accession	<u>P07237</u>
蛋白长度	Full length protein
无动物成分	No
性质	Recombinant
种属	Human
序列	MGSSHHHHHH SSGLVPRGSH MDAPEEEDHV LVLRKSNFAE ALAAHKYLLV EFYAPWCGHC KALAPEYAKA AGKLKAEGSE IRLAKVDATE ESDLAQQYGV RGYPTIKFFR NGDTASPKEY TAGREADDIV NWLKKRTGPA ATTLPDGAAA ESLVESSEVA VIGFFKDVES DSAKQFLQAA EAIDDIPFGI TSNSDVFSKY QLDKDGVLVF KKFDEGRNNF EGEVTKENLL DFIKHNQLPL VIEFTEQTAP KIFGGEIKTH ILLFLPKSVS DYDGKLSNFK TAAESFKGKI LFIFIDSHT DNQRILEFFG LKKEECPAVR LITLEEEMTK YKPESEELTA ERITEFCHRF LEGKIKPHLM SQELPEDWDK QPVKVLVGKN FEDVAFDEKK NVFVEFYAPW CGHCKQLAPI WDKLGETYKD HENIVIAKMD STANEVEAVK VHSFPTLKFF PASADRTVID YNGERTLDGF KKFLES GGQD GAGDDDDLED LEEAEEPME EDDQKAVKD EL
预测分子量	57 kDa
氨基酸	18 to 508
标签	His tag N-Terminus
额外的序列信息	This product is for the mature full length protein from aa 18 to 508. The signal peptide is not

included.

## 技术指标

---

Our **Abpromise guarantee** covers the use of **ab206803** in the following tested applications.

The application notes include recommended starting dilutions; optimal dilutions/concentrations should be determined by the end user.

应用	Mass Spectrometry
	SDS-PAGE
	Functional Studies
质谱法	MALDI-TOF
形式	Liquid

## 制备和贮存

---

稳定性和存储	Shipped at 4°C. Store at +4°C short term (1-2 weeks). Upon delivery aliquot. Store at -20°C long term. Avoid freeze / thaw cycle.
	pH: 8.00
	Constituents: 0.32% Tris HCl, 10% Glycerol (glycerin, glycerine)
	This product is an active protein and may elicit a biological response in vivo, handle with caution.

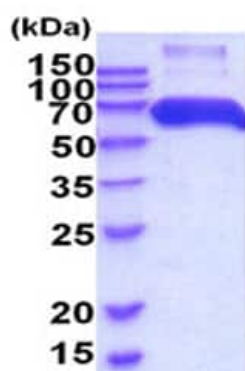
## 常规信息

---

功能	This multifunctional protein catalyzes the formation, breakage and rearrangement of disulfide bonds. At the cell surface, seems to act as a reductase that cleaves disulfide bonds of proteins attached to the cell. May therefore cause structural modifications of exofacial proteins. Inside the cell, seems to form/rearrange disulfide bonds of nascent proteins. At high concentrations, functions as a chaperone that inhibits aggregation of misfolded proteins. At low concentrations, facilitates aggregation (anti-chaperone activity). May be involved with other chaperones in the structural modification of the TG precursor in hormone biogenesis. Also acts a structural subunit of various enzymes such as prolyl 4-hydroxylase and microsomal triacylglycerol transfer protein MTTP.
序列相似性	Belongs to the protein disulfide isomerase family. Contains 2 thioredoxin domains.
细胞定位	Endoplasmic reticulum lumen. Melanosome. Cell membrane. Highly abundant. In some cell types, seems to be also secreted or associated with the plasma membrane, where it undergoes constant shedding and replacement from intracellular sources (Probable). Localizes near CD4-enriched regions on lymphoid cell surfaces. Identified by mass spectrometry in melanosome fractions from stage I to stage IV.

## 图片

---



15% SDS-PAGE analysis of ab206803: 3µg loaded

SDS-PAGE - Recombinant human P4HB protein  
(His tag) (ab206803)

**Please note:** All products are "FOR RESEARCH USE ONLY. NOT FOR USE IN DIAGNOSTIC PROCEDURES"

#### Our Abpromise to you: Quality guaranteed and expert technical support

---

- Replacement or refund for products not performing as stated on the datasheet
- Valid for 12 months from date of delivery
- Response to your inquiry within 24 hours
- We provide support in Chinese, English, French, German, Japanese and Spanish
- Extensive multi-media technical resources to help you
- We investigate all quality concerns to ensure our products perform to the highest standards

If the product does not perform as described on this datasheet, we will offer a refund or replacement. For full details of the Abpromise, please visit <https://www.abcam.cn/abpromise> or contact our technical team.

#### Terms and conditions

---

- Guarantee only valid for products bought direct from Abcam or one of our authorized distributors