

Recombinant Human OLFM4 protein ab112393

1 图像

描述

| | |
|-----------|-----------------------|
| 产品名称 | 重组人OLFM4蛋白 |
| 表达系统 | Wheat germ |
| Accession | Q6UX06 |
| 蛋白长度 | Full length protein |
| 无动物成分 | No |
| 性质 | Recombinant |
| 种属 | Human |
| 预测分子量 | 84 kDa including tags |
| 氨基酸 | 1 to 510 |

技术指标

Our **Abpromise guarantee** covers the use of **ab112393** in the following tested applications.

The application notes include recommended starting dilutions; optimal dilutions/concentrations should be determined by the end user.

| | |
|----|-----------------------------------|
| 应用 | ELISA SDS-PAGE Western blot |
| 形式 | Liquid |

制备和贮存

| | |
|--------|--|
| 稳定性和存储 | Shipped on dry ice. Upon delivery aliquot and store at -80°C. Avoid freeze / thaw cycles. pH: 8.00 Constituents: 0.31% Glutathione, 0.79% Tris HCl |
|--------|--|

常规信息

| | |
|-------|---|
| 功能 | An antiapoptotic factor that promotes tumor growth. Promotes proliferation of pancreatic cancer cells by favoring the transition from the S to G2/M phase. Facilitates cell adhesion. |
| 组织特异性 | Expressed during myeloid lineage development. Strongly expressed in the prostate, small |

intestine and colon and moderately expressed in the bone marrow and stomach. Highly expressed in pancreatic cancer tissues and shows an elevated expression level during the early S phase of the cell cycle. Also expressed at high levels in stomach cancer and colon cancer tissues.

序列相似性

Contains 1 olfactomedin-like domain.

结构域

The olfactomedin-like domain is involved in the interaction with cadherin.

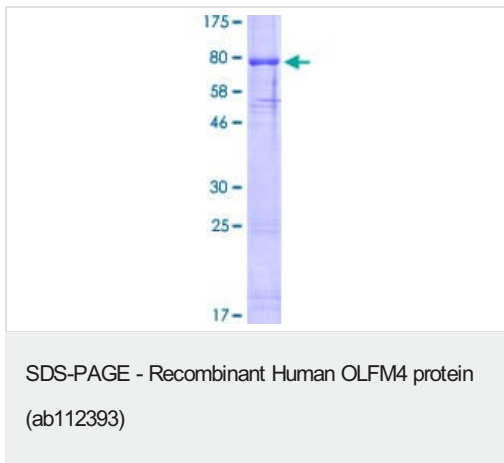
翻译后修饰

N-glycosylated.

细胞定位

Secreted > extracellular space. According to PubMed:15059901, found in mitochondrion and nucleus.

图片



12.5% SDS-PAGE analysis of ab112393. Stained with Coomassie Blue.

Please note: All products are "FOR RESEARCH USE ONLY. NOT FOR USE IN DIAGNOSTIC PROCEDURES"

Our Abpromise to you: Quality guaranteed and expert technical support

- Replacement or refund for products not performing as stated on the datasheet
- Valid for 12 months from date of delivery
- Response to your inquiry within 24 hours
- We provide support in Chinese, English, French, German, Japanese and Spanish
- Extensive multi-media technical resources to help you
- We investigate all quality concerns to ensure our products perform to the highest standards

If the product does not perform as described on this datasheet, we will offer a refund or replacement. For full details of the Abpromise, please visit <https://www.abcam.cn/abpromise> or contact our technical team.

Terms and conditions

- Guarantee only valid for products bought direct from Abcam or one of our authorized distributors