

Recombinant Human Nucleoporin p62/NUP62 protein ab161728

1 图像

描述

产品名称	重组人Nucleoporin p62/NUP62蛋白
表达系统	Wheat germ
蛋白长度	Full length protein
无动物成分	No
性质	Recombinant
种属	Human
序列	<pre> MSGFNFGGTGAPTGGFTFGTAKTATTTTPATGFSFSTSGTGGF NFGAPFQP ATSTPSTGLFSLATQTPATQTTGFTFGTATLASGGTGFSLGI GASKLNLS NTAATPAMANPSGFGLGSSNLTNAISSTVTSSQGTAPTGFVF GPSTTSVA PATTSGGFSFTGGSTAQPSGFNIGSAGNSAQPTAPATLPFTP ATPAATTA GATQPAAPTPTATITSTGPSLFASIATAPTSSATTGLSLCTP VTTAGAPT AGTQGFSLKAPGAASGTSTTTSTAATATATTTSSSSTTGFBAL NLKPLAPA GIPSNTAAAVTAPPGGAAAGAAASSAMTYAQLESINKWSL ELEDQERH FLQQATQVNAWDRTLIENGEKITS LHREVEKVKLDQKRLDQE LDFILSQQ KELEDLLSPLEELVKEQSGTIY LQHADEEREKTYKLAENIDA QLKRMAQD LKDIIEHLNTSGAPADTSDPLQQICKILNAHMDSLQWIDQNS ALLQRKVE EVTKVCEGRRKEQERSFRITFD </pre>
氨基酸	1 to 522
标签	GST tag N-Terminus

技术指标

Our **Abpromise guarantee** covers the use of **ab161728** in the following tested applications.

The application notes include recommended starting dilutions; optimal dilutions/concentrations should be determined by the end user.

应用	ELISA Western blot
形式	Liquid
补充说明	This product was previously labelled as Nucleoporin p62.

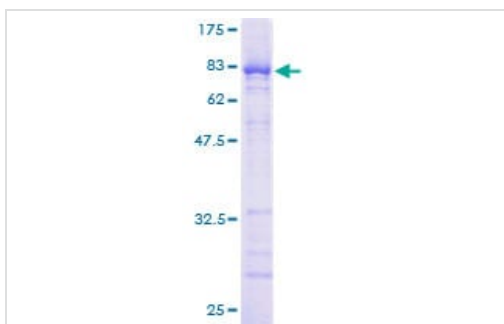
制备和贮存

稳定性和存储	Shipped on dry ice. Upon delivery aliquot and store at -80°C. Avoid freeze / thaw cycles. pH: 8.00 Constituents: 0.31% Glutathione, 0.79% Tris HCl
--------	--

常规信息

相关性	The nuclear pore complex is a structure that extends across the nuclear envelope and regulates the flow of macromolecules between the cytoplasm and the nucleus. Nucleoporins are the main components of the nuclear pore complex in eukaryotic cells. Nup 62 is localized to the nuclear pore central plug. This protein associates with the importin alpha/beta complex which is involved in the import of proteins containing nuclear localization signals. There are multiple transcript variants of this gene, however, they encode a single protein isoform. This protein undergoes post-translational modifications. It contains about 10 N-acetylglucosamine side chain sites.
细胞定位	Nucleus; nuclear pore complex. Cytoplasm; cytoskeleton; spindle pole. Note: Central region of the nuclear pore, within the transporter. During mitotic cell division, it associates with the poles of the mitotic spindle.

图片



ab161728 on a 12.5% SDS-PAGE stained with Coomassie Blue.

SDS-PAGE - Recombinant Human Nucleoporin
p62/NUP62 protein (ab161728)

Please note: All products are "FOR RESEARCH USE ONLY. NOT FOR USE IN DIAGNOSTIC PROCEDURES"

Our Abpromise to you: Quality guaranteed and expert technical support

- Replacement or refund for products not performing as stated on the datasheet
- Valid for 12 months from date of delivery
- Response to your inquiry within 24 hours

- We provide support in Chinese, English, French, German, Japanese and Spanish
- Extensive multi-media technical resources to help you
- We investigate all quality concerns to ensure our products perform to the highest standards

If the product does not perform as described on this datasheet, we will offer a refund or replacement. For full details of the Abpromise, please visit <https://www.abcam.cn/abpromise> or contact our technical team.

Terms and conditions

- Guarantee only valid for products bought direct from Abcam or one of our authorized distributors