

### Recombinant human NUA2 protein ab105209

#### 5 图像

#### 描述

产品名称	重组人NUAK2蛋白
生物活性	The Specific activity of ab105209 was determined to be 80 nmol/min/mg.
纯度	> 75 % SDS-PAGE. Purity was determined to be >75% by densitometry. Affinity purified.
表达系统	Baculovirus infected Sf9 cells
Accession	<b><u>Q9H093</u></b>
蛋白长度	Full length protein
无动物成分	No
性质	Recombinant
种属	Human
预测分子量	110 kDa including tags
氨基酸	1 to 628

#### 技术指标

Our **Abpromise guarantee** covers the use of **ab105209** in the following tested applications.

The application notes include recommended starting dilutions; optimal dilutions/concentrations should be determined by the end user.

应用	SDS-PAGE Western blot Functional Studies
形式	Liquid
补充说明	<b><u>ab204854</u></b> (Cdc25C peptide) can be utilized as a substrate for assessing kinase activity

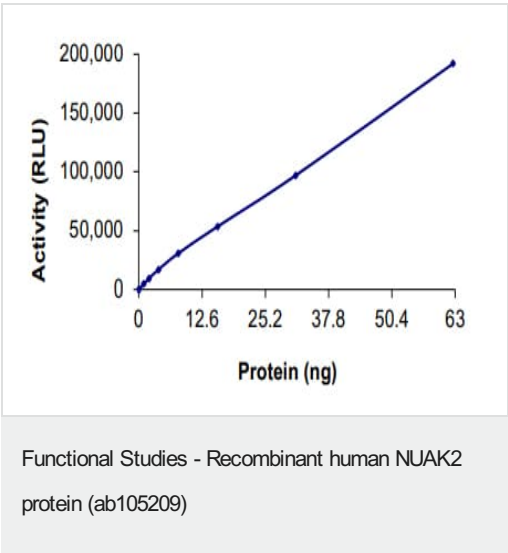
#### 制备和贮存

稳定性和存储	Shipped on dry ice. Upon delivery aliquot and store at -80°C. Avoid freeze / thaw cycles. pH: 7.50 Constituents: 0.307% Glutathione, 0.00174% PMSF, 0.00385% DTT, 0.79% Tris HCl, 0.00292% EDTA, 25% Glycerol (glycerin, glycerine), 0.87% Sodium chloride This product is an active protein and may elicit a biological response in vivo, handle with caution.
--------	--

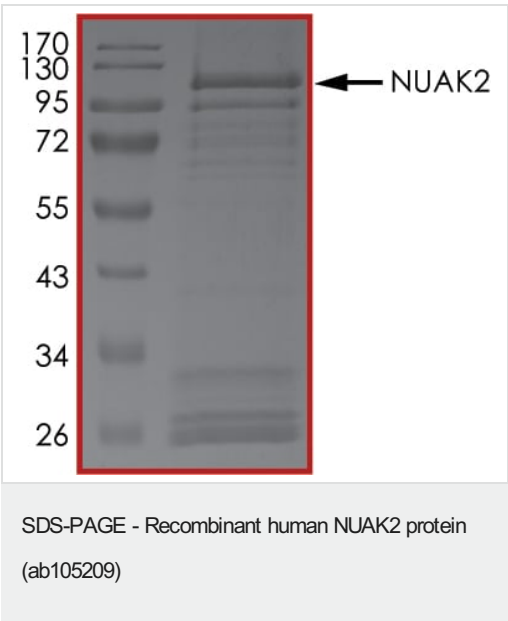
常规信息

功能	Stress-activated kinase involved in tolerance to glucose starvation. Induces cell-cell detachment by increasing F-actin conversion to G-actin. Expression is induced by CD95 or TNF-alpha, via NF-kappa-B. Protects cells from CD95-mediated apoptosis and is required for the increased motility and invasiveness of CD95-activated tumor cells. Able to phosphorylate 'Ser-464' of LATS1.
序列相似性	Belongs to the protein kinase superfamily. CAMK Ser/Thr protein kinase family. SNF1 subfamily. Contains 1 protein kinase domain.
翻译后修饰	Phosphorylated at Thr-208 by STK11/LKB1 in complex with STE20-related adapter-alpha (STRADA) pseudo kinase and CAB39. Autophosphorylated in vitro.

图片



The specific activity of NUA2 (ab105209) was determined to be 11.2 nmol/min/mg as per activity assay protocol and was equivalent to 81 nmol/min/mg as per radiometric assay

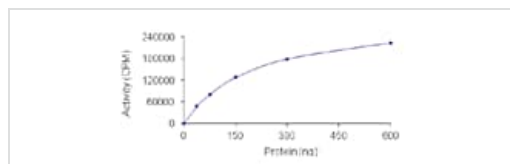


SDS PAGE analysis of ab105209



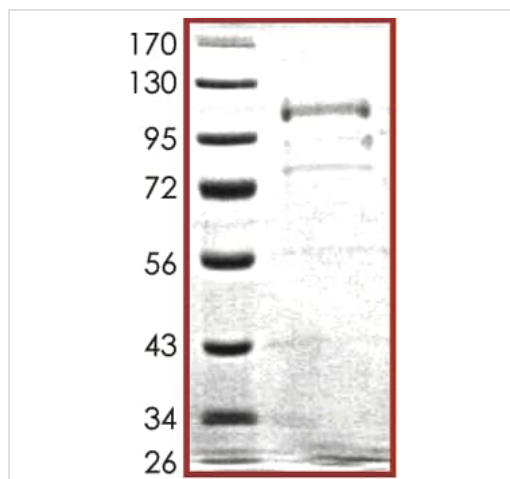
SDS PAGE analysis of ab105209

SDS-PAGE - Recombinant human NUA2 protein  
(ab105209)



The Specific activity of ab105209 was determined to be 80 nmol/min/mg.

Functional Studies - Recombinant human NUA2 protein (ab105209)



SDS-PAGE showing ab105209 at approximately 110kDa.

SDS-PAGE - Recombinant human NUA2 protein  
(ab105209)

**Please note:** All products are "FOR RESEARCH USE ONLY. NOT FOR USE IN DIAGNOSTIC PROCEDURES"

### Our Abpromise to you: Quality guaranteed and expert technical support

- Replacement or refund for products not performing as stated on the datasheet
- Valid for 12 months from date of delivery

- Response to your inquiry within 24 hours
- We provide support in Chinese, English, French, German, Japanese and Spanish
- Extensive multi-media technical resources to help you
- We investigate all quality concerns to ensure our products perform to the highest standards

If the product does not perform as described on this datasheet, we will offer a refund or replacement. For full details of the Abpromise, please visit <https://www.abcam.cn/abpromise> or contact our technical team.

#### **Terms and conditions**

---

- Guarantee only valid for products bought direct from Abcam or one of our authorized distributors