

Recombinant Human NTAL protein ab95498

1 图像

描述

产品名称	重组人NTAL蛋白
纯度	> 80 % SDS-PAGE. Purified by using conventional chromatography techniques
表达系统	Escherichia coli
Accession	<u>Q9GZY6</u>
蛋白长度	Protein fragment
无动物成分	No
性质	Recombinant
种属	Human
序列	MGSSHHHHH S SGLVPRGSH MRC SRPGAKR SEKIYQQRSL REDQQSFTGS RTYSLVGQAW PGPLADMAPT RKDKLLQFYP SLEDPASSRY QNFSKGSRHG SEEAYIDPIA MEYYNWGRFS KPPEDDDANS YENVLICKQK TTETGAQQEG IGGLCRGDLS LSLALKTGPT SGLCPSASPE EDEESEDYQN SASIHQWRES RKVMGQLQRE ASPGPVGSPD EEDGEPDYVN GEVAATEA
预测分子量	26 kDa including tags
氨基酸	27 to 243
标签	His tag N-Terminus

技术指标

Our **Abpromise guarantee** covers the use of **ab95498** in the following tested applications.

The application notes include recommended starting dilutions; optimal dilutions/concentrations should be determined by the end user.

应用	Mass Spectrometry SDS-PAGE
形式	Liquid

制备和贮存

稳定性和存储

Shipped at 4°C. Upon delivery aliquot and store at -20°C or -80°C. Avoid repeated freeze / thaw cycles.

pH: 8.00

Constituents: 0.316% Tris HCl, 10% Glycerol (glycerin, glycerine)

常规信息

功能

Involved in FCER1 (high affinity immunoglobulin epsilon receptor)-mediated signaling in mast cells. May also be involved in BCR (B-cell antigen receptor)-mediated signaling in B-cells and FCGR1 (high affinity immunoglobulin gamma Fc receptor I)-mediated signaling in myeloid cells. Couples activation of these receptors and their associated kinases with distal intracellular events through the recruitment of GRB2.

组织特异性

Highly expressed in spleen, peripheral blood lymphocytes, and germinal centers of lymph nodes. Also expressed in placenta, lung, pancreas and small intestine. Present in B-cells, NK cells and monocytes. Absent from T-cells (at protein level).

疾病相关

Note=LAT2 is located in the Williams-Beuren syndrome (WBS) critical region. WBS results from a hemizygous deletion of several genes on chromosome 7q11.23, thought to arise as a consequence of unequal crossing over between highly homologous low-copy repeat sequences flanking the deleted region. Haploinsufficiency of LAT2 may be the cause of certain cardiovascular and musculo-skeletal abnormalities observed in the disease.

翻译后修饰

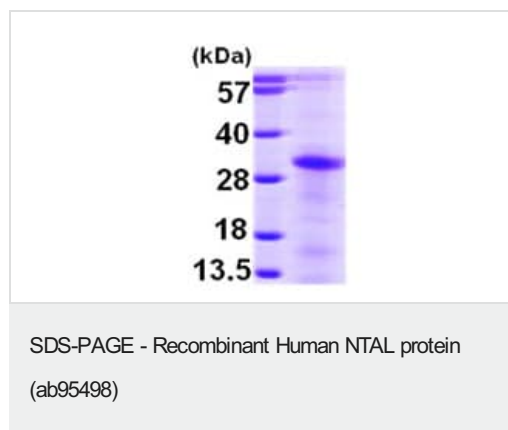
Phosphorylated on tyrosines following cross-linking of BCR in B-cells, FCGR1 in myeloid cells, or FCER1 in mast cells; which induces the recruitment of GRB2.

May be polyubiquitinated.

细胞定位

Cell membrane. Present in lipid rafts.

图片



15% SDS-PAGE analysis of 3µg ab95498.

Please note: All products are "FOR RESEARCH USE ONLY. NOT FOR USE IN DIAGNOSTIC PROCEDURES"

Our Abpromise to you: Quality guaranteed and expert technical support

- Replacement or refund for products not performing as stated on the datasheet
- Valid for 12 months from date of delivery

- Response to your inquiry within 24 hours
- We provide support in Chinese, English, French, German, Japanese and Spanish
- Extensive multi-media technical resources to help you
- We investigate all quality concerns to ensure our products perform to the highest standards

If the product does not perform as described on this datasheet, we will offer a refund or replacement. For full details of the Abpromise, please visit <https://www.abcam.cn/abpromise> or contact our technical team.

Terms and conditions

- Guarantee only valid for products bought direct from Abcam or one of our authorized distributors