

Recombinant Human Nrf2 protein ab114160

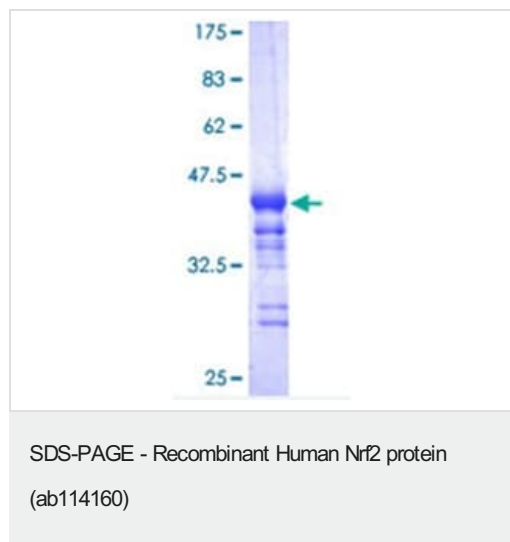
1 图像

描述	
产品名称	重组人Nrf2蛋白
表达系统	Wheat germ
Accession	<u>Q16236</u>
蛋白长度	Protein fragment
无动物成分	No
性质	Recombinant
种属	Human
序列	FAQLQLDEETGEFLPIQPAQHIIQSETSGSANYSQVAHIPKSD ALYFDDCM QLLAQTFPFVDDNEVSSATFQSLVPDIPGHIESPVFIATNQA QSPETSVA
预测分子量	37 kDa including tags
氨基酸	71 to 170
标签	GST tag N-Terminus
技术指标	
Our <u>Abpromise guarantee</u> covers the use of ab114160 in the following tested applications.	
The application notes include recommended starting dilutions; optimal dilutions/concentrations should be determined by the end user.	
应用	Western blot ELISA SDS-PAGE
形式	Liquid
制备和贮存	
稳定性和存储	Shipped on dry ice. Upon delivery aliquot and store at -80°C. Avoid freeze / thaw cycles. pH: 8 Constituents: 0.3% Glutathione, 0.79% Tris HCl

常规信息

功能	Transcription activator that binds to antioxidant response (ARE) elements in the promoter regions of target genes. Important for the coordinated up-regulation of genes in response to oxidative stress. May be involved in the transcriptional activation of genes of the beta-globin cluster by mediating enhancer activity of hypersensitive site 2 of the beta-globin locus control region.
组织特异性	Widely expressed. Highest expression in adult muscle, kidney, lung, liver and in fetal muscle.
序列相似性	Belongs to the bZIP family. CNC subfamily. Contains 1 bZIP domain.
结构域	Acidic activation domain in the N-terminus, and DNA binding domain in the C-terminus.
翻译后修饰	Phosphorylation of Ser-40 by PKC in response to oxidative stress dissociates NFE2L2 from its cytoplasmic inhibitor KEAP1, promoting its translocation into the nucleus.
细胞定位	Cytoplasm > cytosol. Nucleus. Cytosolic under unstressed conditions, translocates into the nucleus upon induction by electrophilic agents.

图片



12.5% SDS-PAGE analysis of ab114160, stained with Coomassie Blue.

Please note: All products are "FOR RESEARCH USE ONLY. NOT FOR USE IN DIAGNOSTIC PROCEDURES"

Our Abpromise to you: Quality guaranteed and expert technical support

- Replacement or refund for products not performing as stated on the datasheet
- Valid for 12 months from date of delivery
- Response to your inquiry within 24 hours
- We provide support in Chinese, English, French, German, Japanese and Spanish
- Extensive multi-media technical resources to help you
- We investigate all quality concerns to ensure our products perform to the highest standards

If the product does not perform as described on this datasheet, we will offer a refund or replacement. For full details of the Abpromise, please visit <https://www.abcam.cn/abpromise> or contact our technical team.

Terms and conditions

- Guarantee only valid for products bought direct from Abcam or one of our authorized distributors