

### Recombinant human NLK protein ab107700

#### 2 图像

#### 描述

产品名称	重组人NLK蛋白
生物活性	Specific activity: 2.4 nmol/min/mg
纯度	> 85 % SDS-PAGE. The purity was determined to be >85% by densitometry. GST Affinity Column purified.
表达系统	Baculovirus infected Sf9 cells
Accession	<a href="#"><u>Q9UBE8</u></a>
蛋白长度	Full length protein
无动物成分	No
性质	Recombinant
种属	Human
预测分子量	84 kDa including tags
氨基酸	1 to 527

#### 技术指标

Our [Abpromise guarantee](#) covers the use of **ab107700** in the following tested applications.

The application notes include recommended starting dilutions; optimal dilutions/concentrations should be determined by the end user.

应用	SDS-PAGE Western blot Functional Studies
形式	Liquid
补充说明	<a href="#"><u>ab64311</u></a> (Myelin Basic Protein protein) can be utilized as a substrate for assessing kinase activity

#### 制备和贮存

稳定性和存储	Shipped on dry ice. Upon delivery aliquot and store at -80°C. Avoid freeze / thaw cycles. pH: 7.50 Constituents: 0.307% Glutathione, 0.00174% PMSF, 0.00385% DTT, 0.79% Tris HCl, 0.00292% EDTA, 25% Glycerol (glycerin, glycerine), 0.87% Sodium chloride
--------	--

This product is an active protein and may elicit a biological response in vivo, handle with caution.

## 常规信息

### 功能

Role in cell fate determination, required for differentiation of bone marrow stromal cells. Acts downstream of MAP3K7 and HIPK2 to negatively regulate the canonical Wnt/beta-catenin signaling pathway and the phosphorylation and destruction of the MYB transcription factor. May suppress a wide range of transcription factors by phosphorylation of the coactivator, CREBBP (By similarity). Involved in TGFbeta-mediated mesoderm induction, acting downstream of MAP3K7/TAK1 to phosphorylate STAT3.

### 序列相似性

Belongs to the protein kinase superfamily. CMGC Ser/Thr protein kinase family. MAP kinase subfamily.

Contains 1 protein kinase domain.

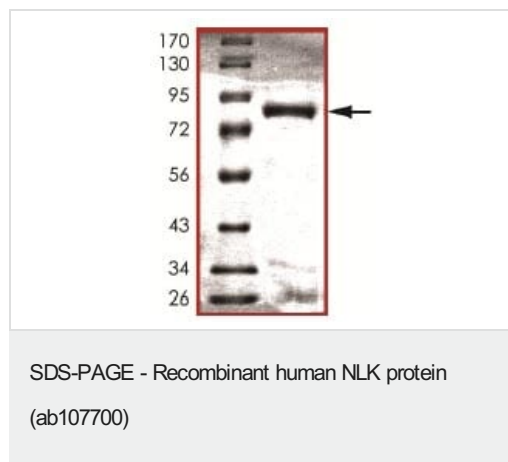
### 翻译后修饰

Dually phosphorylated on Thr-303 and Tyr-305, which activates the enzyme.

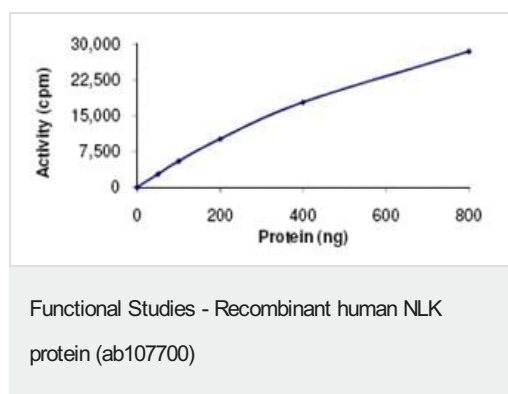
### 细胞定位

Nucleus. Cytoplasm. Predominantly nuclear. A smaller fraction is cytoplasmic.

## 图片



SDS-PAGE analysis of ab107700



Specific activity of ab107700 was determined to be 2.4 nmol/min/mg.

**Please note:** All products are "FOR RESEARCH USE ONLY. NOT FOR USE IN DIAGNOSTIC PROCEDURES"

**Our Abpromise to you: Quality guaranteed and expert technical support**

- Replacement or refund for products not performing as stated on the datasheet
- Valid for 12 months from date of delivery
- Response to your inquiry within 24 hours
- We provide support in Chinese, English, French, German, Japanese and Spanish
- Extensive multi-media technical resources to help you
- We investigate all quality concerns to ensure our products perform to the highest standards

If the product does not perform as described on this datasheet, we will offer a refund or replacement. For full details of the Abpromise, please visit <https://www.abcam.cn/abpromise> or contact our technical team.

#### **Terms and conditions**

---

- Guarantee only valid for products bought direct from Abcam or one of our authorized distributors