

# Recombinant Human Nephrin protein ab114263

## 1 图像

### 描述

---

产品名称	重组人Nephrin蛋白
表达系统	Wheat germ
Accession	<b><u>O60500</u></b>
蛋白长度	Protein fragment
无动物成分	No
性质	Recombinant
种属	Human
序列	GFWALPENLTVVEGASVELRCGVSTPGSAVQWAKDGLLLGPD PRIPGFPR YRLEGDPARGEHLHIEACDLSDDAEYECQVGRSEMGPEL
预测分子量	36 kDa including tags
氨基酸	33 to 122
标签	GST tag N-Terminus

### 技术指标

---

Our **Abpromise guarantee** covers the use of **ab114263** in the following tested applications.

The application notes include recommended starting dilutions; optimal dilutions/concentrations should be determined by the end user.

应用	SDS-PAGE Western blot ELISA
形式	Liquid
补充说明	

### 制备和贮存

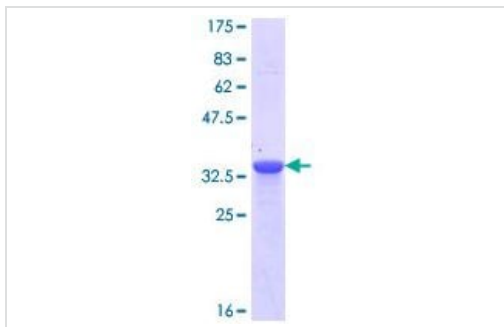
---

稳定性和存储	Shipped on dry ice. Upon delivery aliquot and store at -80°C. Avoid freeze / thaw cycles. pH: 8.00 Constituents: 0.3% Glutathione, 0.79% Tris HCl
--------	---

## 常规信息

<b>功能</b>	Seems to play a role in the development or function of the kidney glomerular filtration barrier. Regulates glomerular vascular permeability. May anchor the podocyte slit diaphragm to the actin cytoskeleton. Plays a role in skeletal muscle formation through regulation of myoblast fusion.
<b>组织特异性</b>	Specifically expressed in podocytes of kidney glomeruli.
<b>疾病相关</b>	Defects in NPHS1 are the cause of nephrotic syndrome type 1 (NPHS1) [MIM:256300]; also known as Finnish congenital nephrosis (CNF). A renal disease characterized clinically by proteinuria, hypoalbuminemia, hyperlipidemia, and edema. Kidney biopsies show non-specific histologic changes such as focal segmental glomerulosclerosis and diffuse mesangial proliferation. Some affected individuals have an inherited steroid-resistant form and progress to end-stage renal failure.
<b>序列相似性</b>	Belongs to the immunoglobulin superfamily. Contains 1 fibronectin type-III domain. Contains 8 Ig-like C2-type (immunoglobulin-like) domains.
<b>发展阶段</b>	In 23-week-old embryo found in epithelial podocytes of the periphery of mature and developing glomeruli.
<b>翻译后修饰</b>	Phosphorylated on tyrosine residues.
<b>细胞定位</b>	Cell membrane. Predominantly located at podocyte slit diaphragm between podocyte foot processes. Also associated with podocyte apical plasma membrane.

## 图片



SDS-PAGE - Recombinant Human Nephrin protein  
(ab114263)

ab114263 analysed on a 12.5% SDS-PAGE stained with Coomassie Blue.

**Please note:** All products are "FOR RESEARCH USE ONLY. NOT FOR USE IN DIAGNOSTIC PROCEDURES"

## Our Abpromise to you: Quality guaranteed and expert technical support

- Replacement or refund for products not performing as stated on the datasheet
- Valid for 12 months from date of delivery
- Response to your inquiry within 24 hours

- We provide support in Chinese, English, French, German, Japanese and Spanish
- Extensive multi-media technical resources to help you
- We investigate all quality concerns to ensure our products perform to the highest standards

If the product does not perform as described on this datasheet, we will offer a refund or replacement. For full details of the Abpromise, please visit <https://www.abcam.cn/abpromise> or contact our technical team.

### **Terms and conditions**

---

- Guarantee only valid for products bought direct from Abcam or one of our authorized distributors