

Recombinant human NDRG1 protein ab87685

1 图像

描述		
产品名称	重组人NDRG1蛋白	
生物活性	The ED50 for this effect is 0.5 - 1.5 ng/ml. Measured in a cell proliferation assay using MCF7 cell. <b>Activity Assay</b> Cell line: MCF7 (Human breast adenocarcinoma cell) Maintenance Condition: RPMI 1640 containing 10% FBS Assay medium: serum free RPMI 1640 Cell density: 2 x 104 cells/well (96 well plate, final volume 100ul) Incubation time : 40 hrs (after sample treatment) Concentration range: 0.19ng/ml - 50ng/ml Detection method : BrdU assay	
纯度	> 95 % SDS-PAGE. ab87685 is purified using conventional chromatography.	
表达系统	Escherichia coli	
蛋白长度	Full length protein	
无动物成分	No	
性质	Recombinant	
种属	Human	
序列	MSREMQDVDL AEVKPLVEKG ETITGLLQEF DVQEQDIETL HGSVHVTLCG TPKGMRPVIL TYHDIGMNHK TCYNPLFNYE DMQEITQHFA VCHVDAPGQQ DGAASFAGY MYPSMDQLAE MLPGVLQQFG LKSIIGMTG AGAYILTRFA LNNPEMVEGL VLINVNPCAE GWMDWAASKI SGWTQALPDM VVSHLFGKEE MQSNVEVVHT YRQHIVNDMN PGNLHLFINA YNSRRDLEIE RPMPGTHTVT LQCPALLVVG DSSPAVDAVV ECNSKLDPTK TTLLKMADCG GLPQISQPAK LAEAFKYFVQ GMGYMPSASM TRLMRSRTAS GSSVTSLDGT RSRSHSTSEGT RSRSHSTSEGT RSRSHSTSEGA HLDITPNSGA AGNSAGPKSM EVSCLEHHHH HH	

---

Our **Abpromise guarantee** covers the use of **ab87685** in the following tested applications.

The application notes include recommended starting dilutions; optimal dilutions/concentrations should be determined by the end user.

**应用** SDS-PAGE

**质谱法** MALDI-TOF

**形式** Liquid

---

## 制备和贮存

**稳定性和存储** Shipped at 4°C. Upon delivery aliquot and store at -20°C or -80°C. Avoid repeated freeze / thaw cycles.

pH: 8.00

Constituents: 0.00174% PMSF, 0.316% Tris HCl, 10% Glycerol (glycerin, glycerine)

This product is an active protein and may elicit a biological response in vivo, handle with caution.

---

## 常规信息

**功能** May have a growth inhibitory role.

**组织特异性** Ubiquitous; expressed most prominently in placental membranes and prostate, kidney, small intestine, and ovary tissues. Reduced expression in adenocarcinomas compared to normal tissues. In colon, prostate and placental membranes, the cells that border the lumen show the highest expression.

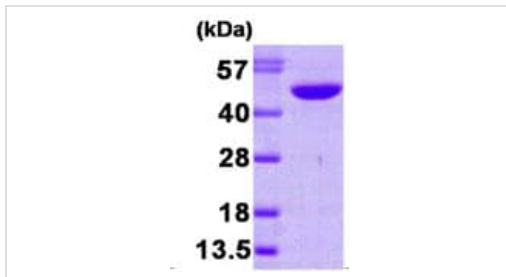
**疾病相关** Defects in NDRG1 are the cause of Charcot-Marie-Tooth disease type 4D (CMT4D) [MIM:601455]; also known as hereditary motor and sensory neuropathy Lom type (HMSNL). CMT4D is a recessive form of Charcot-Marie-Tooth disease, the most common inherited disorder of the peripheral nervous system. Charcot-Marie-Tooth disease is classified in two main groups on the basis of electrophysiologic properties and histopathology: primary peripheral demyelinating neuropathy and primary peripheral axonal neuropathy. Demyelinating CMT neuropathies are characterized by severely reduced nerve conduction velocities (less than 38 m/sec), segmental demyelination and remyelination with onion bulb formations on nerve biopsy, slowly progressive distal muscle atrophy and weakness, absent deep tendon reflexes, and hollow feet. By convention, autosomal recessive forms of demyelinating Charcot-Marie-Tooth disease are designated CMT4.

**序列相似性** Belongs to the NDRG family.

**细胞定位** Cytoplasm. Nucleus. Cell membrane. Whereas in prostate epithelium and placental chorion it is located in both the cytoplasm and the nucleus, nuclear staining is not observed in colon epithelium cells. Instead its localization changes from the cytoplasm to the plasma membrane during differentiation of colon carcinoma cell lines in vitro.

---

## 图片



SDS-PAGE analysis of ab87685.

SDS-PAGE - Recombinant human NDRG1 protein  
(ab87685)

**Please note:** All products are "FOR RESEARCH USE ONLY. NOT FOR USE IN DIAGNOSTIC PROCEDURES"

#### Our Abpromise to you: Quality guaranteed and expert technical support

---

- Replacement or refund for products not performing as stated on the datasheet
- Valid for 12 months from date of delivery
- Response to your inquiry within 24 hours
- We provide support in Chinese, English, French, German, Japanese and Spanish
- Extensive multi-media technical resources to help you
- We investigate all quality concerns to ensure our products perform to the highest standards

If the product does not perform as described on this datasheet, we will offer a refund or replacement. For full details of the Abpromise, please visit <https://www.abcam.cn/abpromise> or contact our technical team.

#### Terms and conditions

---

- Guarantee only valid for products bought direct from Abcam or one of our authorized distributors