

Recombinant Human Myosin Light Chain 2 protein ab79185

2 图像

描述

产品名称	重组人Myosin Light Chain 2蛋白
纯度	> 95 % SDS-PAGE. ab79185 is purified using conventional chromatography techniques.
内毒素水平	< 1.000 Eu/ μ g
表达系统	Escherichia coli
Accession	P10916
蛋白长度	Full length protein
无动物成分	No
性质	Recombinant
种属	Human
序列	MGSSHHHHHH SGLVPRGSH MAPKKAKKRA GGANSNVFSM FEQTQIQEFK EAFTIMDQNR DGFIDKNDLR DTFAALGRVN VKNEEIDEMI KEAPGPINFT VFLTMFGEKL KGADPEETIL NAFKVFDPEG KGVLKADYVR EMLTTQAERF SKEEVDQMFA AFPPDVTGNL DYKNLVHIIT HGEEKD
预测分子量	21 kDa
氨基酸	1 to 166
标签	His tag N-Terminus

技术指标

Our **Abpromise guarantee** covers the use of **ab79185** in the following tested applications.

The application notes include recommended starting dilutions; optimal dilutions/concentrations should be determined by the end user.

应用	SDS-PAGE Western blot
形式	Liquid

制备和贮存

稳定性和存储	Shipped at 4°C. Upon delivery aliquot and store at -20°C. Avoid freeze / thaw cycles.
--------	---

pH: 8.00

Constituents: 0.0555% Calcium chloride, 0.242% Tris, 40% Glycerol (glycerin, glycerine)

常规信息

疾病相关

Defects in MYL2 are the cause of cardiomyopathy familial hypertrophic type 10 (CMH10) [MIM:608758]. Familial hypertrophic cardiomyopathy is a hereditary heart disorder characterized by ventricular hypertrophy, which is usually asymmetric and often involves the interventricular septum. The symptoms include dyspnea, syncope, collapse, palpitations, and chest pain. They can be readily provoked by exercise. The disorder has inter- and intrafamilial variability ranging from benign to malignant forms with high risk of cardiac failure and sudden cardiac death. Defects in MYL2 are the cause of cardiomyopathy familial hypertrophic with mid-left ventricular chamber type 2 (MVC2) [MIM:608758]. MVC2 is a very rare variant of familial hypertrophic cardiomyopathy, characterized by mid-left ventricular chamber thickening.

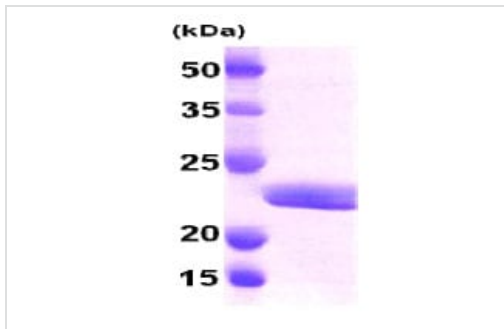
序列相似性

Contains 3 EF-hand domains.

翻译后修饰

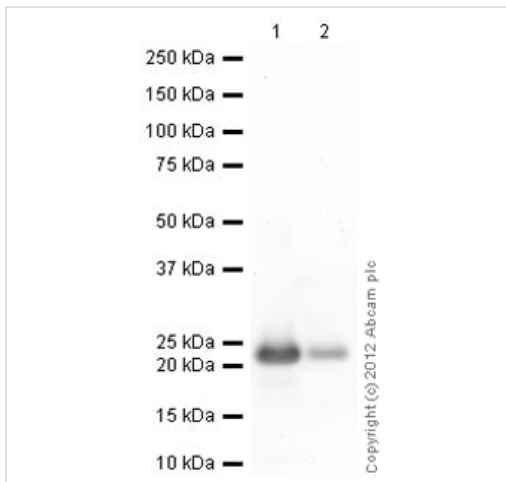
N-terminus is methylated by METTL11A/NTM1.

图片



15% SDS-PAGE showing ab79185 at approximately 21kDa (3 μ g).

SDS-PAGE - Recombinant Human Myosin Light Chain 2 protein (ab79185)



Western blot - Recombinant Human Myosin Light Chain 2 protein (ab79185)

Please note: All products are "FOR RESEARCH USE ONLY. NOT FOR USE IN DIAGNOSTIC PROCEDURES"

Our Abpromise to you: Quality guaranteed and expert technical support

- Replacement or refund for products not performing as stated on the datasheet
- Valid for 12 months from date of delivery
- Response to your inquiry within 24 hours

- We provide support in Chinese, English, French, German, Japanese and Spanish
- Extensive multi-media technical resources to help you
- We investigate all quality concerns to ensure our products perform to the highest standards

If the product does not perform as described on this datasheet, we will offer a refund or replacement. For full details of the Abpromise, please visit <https://www.abcam.cn/abpromise> or contact our technical team.

Terms and conditions

- Guarantee only valid for products bought direct from Abcam or one of our authorized distributors