

Recombinant human MYLK2 protein ab84800

5 图像

描述

产品名称	重组人MYLK2蛋白
生物活性	Specific activity: 270nmol/min/mg.
纯度	> 75 % Densitometry. Affinity purified.
表达系统	Baculovirus infected Sf9 cells
蛋白长度	Full length protein
无动物成分	No
性质	Recombinant
种属	Human
标签	His tag N-Terminus

技术指标

Our **Abpromise guarantee** covers the use of **ab84800** in the following tested applications.

The application notes include recommended starting dilutions; optimal dilutions/concentrations should be determined by the end user.

应用	Western blot Functional Studies
形式	Liquid
补充说明	ab60014 (Mouse MYL9 full length protein) can be utilized as a substrate for assessing Kinase activity

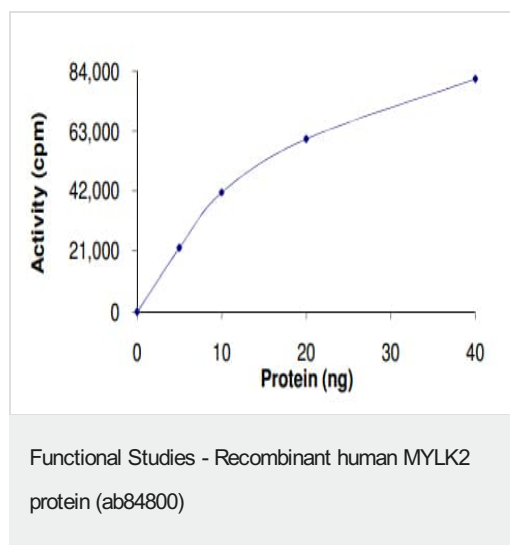
制备和贮存

稳定性和存储	Shipped on dry ice. Upon delivery aliquot and store at -80°C. Avoid freeze / thaw cycles. pH: 7.00 Preservative: 1.02% Imidazole Constituents: 0.00174% PMSF, 0.82% Sodium phosphate, 0.00308% DTT, 25% Glycerol (glycerin, glycerine), 1.74% Sodium chloride This product is an active protein and may elicit a biological response in vivo, handle with caution.
--------	--

常规信息

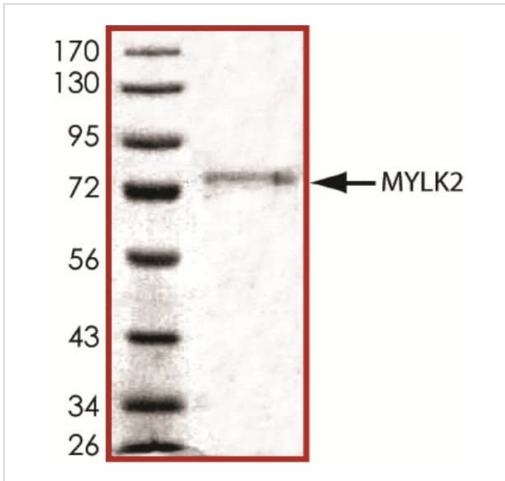
功能	Implicated in the level of global muscle contraction and cardiac function. Phosphorylates a specific serine in the N-terminus of a myosin light chain.
组织特异性	Heart and skeletal muscles. Increased expression in the apical tissue compared to the interventricular septal tissue.
疾病相关	Defects in MYLK2 are a cause of familial hypertrophic cardiomyopathy (CMH) [MIM:192600]; also designated FHC or HCM. Familial hypertrophic cardiomyopathy is a hereditary heart disorder characterized by ventricular hypertrophy, which is usually asymmetric and often involves the interventricular septum. The symptoms include dyspnea, syncope, collapse, palpitations, and chest pain. They can be readily provoked by exercise. The disorder has inter- and intrafamilial variability ranging from benign to malignant forms with high risk of cardiac failure and sudden cardiac death.
序列相似性	Belongs to the protein kinase superfamily. CAMK Ser/Thr protein kinase family. Contains 1 protein kinase domain.
细胞定位	Cytoplasm. Colocalizes with phosphorylated myosin light chain (RLCP) at filaments of the myofibrils.

图片



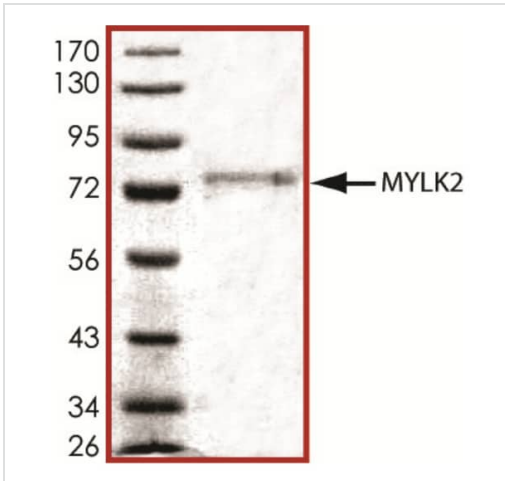
The specific activity of MYLK2 (ab84800) was determined to be 238 nmol/min/mg as per activity assay protocol

SDS PAGE analysis of ab84800



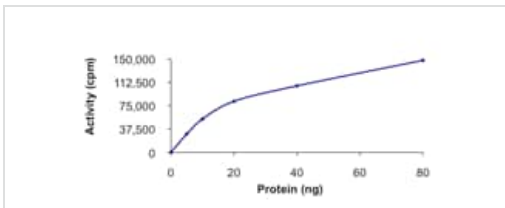
SDS-PAGE - Recombinant human MYLK2 protein (ab84800)

SDS PAGE analysis of ab84800



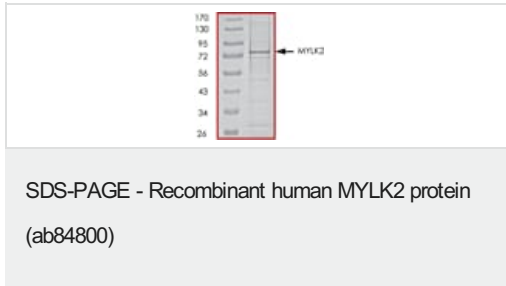
SDS-PAGE - Recombinant human MYLK2 protein (ab84800)

Specific activity of ab84800



Functional Studies - Recombinant human MYLK2 protein (ab84800)

SDS page analysis of ab84800



Please note: All products are "FOR RESEARCH USE ONLY. NOT FOR USE IN DIAGNOSTIC PROCEDURES"

Our Abpromise to you: Quality guaranteed and expert technical support

- Replacement or refund for products not performing as stated on the datasheet
- Valid for 12 months from date of delivery
- Response to your inquiry within 24 hours
- We provide support in Chinese, English, French, German, Japanese and Spanish
- Extensive multi-media technical resources to help you
- We investigate all quality concerns to ensure our products perform to the highest standards

If the product does not perform as described on this datasheet, we will offer a refund or replacement. For full details of the Abpromise, please visit <https://www.abcam.cn/abpromise> or contact our technical team.

Terms and conditions

- Guarantee only valid for products bought direct from Abcam or one of our authorized distributors