

Recombinant Human MYL9 protein ab104014

★★★★★ 1 Abreviews 2 图像

描述	
产品名称	重组人MYL9蛋白
纯度	> 90 % SDS-PAGE. Purified by using anion-exchange chromatography (DEAE sepharose resin) and gel-filtration chromatography (Sephacryl S-200) with 20mM Tris pH 7.5, 2mM EDTA.
表达系统	Escherichia coli
Accession	<b><u>P24844</u></b>
蛋白长度	Full length protein
无动物成分	No
性质	Recombinant
种属	Human
序列	<b>MGSSHHHHHH SSGLVPRGSH MSSKRAKAKT</b> TKKRPQRATS NVFAMFDQSQ IQEFKEAFNM IDQNRDGFID KEDLHDMLAS LGKNPTDEYL EGMMSEAPGP INFTMFLTMF GEKLNGTDPE DVIRNAFACF DEEASGFIHE DHLRELLTTM GDRFTDEEVD EMYREAPIDK KGNFNYVEFT RILKHGAKDK DD
预测分子量	22 kDa
氨基酸	1 to 172
标签	His tag N-Terminus

技术指标	
Our <b>Abpromise guarantee</b> covers the use of <b>ab104014</b> in the following tested applications.	
The application notes include recommended starting dilutions; optimal dilutions/concentrations should be determined by the end user.	
应用	Mass Spectrometry SDS-PAGE Western blot
质谱法	MALDI-TOF
形式	Liquid

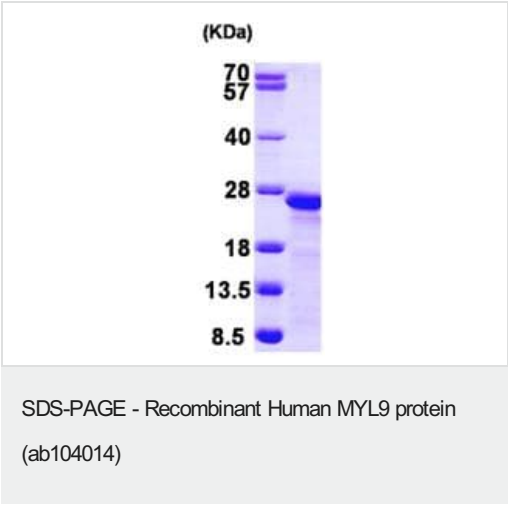
制备和贮存

稳定性和存储	Shipped at 4°C. Store at +4°C short term (1-2 weeks). Upon delivery aliquot. Store at -20°C or -80°C. Avoid freeze / thaw cycle.  pH: 8.00 Constituents: 0.0154% DTT, 0.316% Tris HCl, 10% Glycerol (glycerin, glycerine), 0.58% Sodium chloride
--------	---

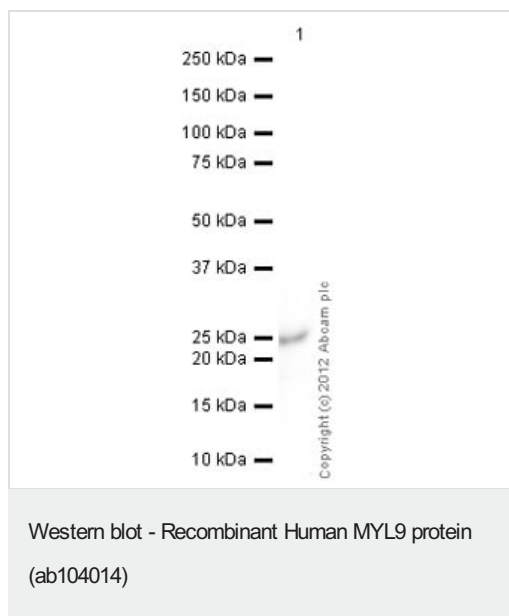
常规信息

功能	Myosin regulatory subunit that plays an important role in regulation of both smooth muscle and nonmuscle cell contractile activity via its phosphorylation. Implicated in cytokinesis, receptor capping, and cell locomotion.
组织特异性	Smooth muscle tissues and in some, but not all, nonmuscle cells.
序列相似性	Contains 3 EF-hand domains.
翻译后修饰	Phosphorylation increases the actin-activated myosin ATPase activity and thereby regulates the contractile activity. It is required to generate the driving force in the migration of the cells but not necessary for localization of myosin-2 at the leading edge.

图片



15% SDS-PAGE analysis of ab104014 (3 µg)



Anti-MYL9 antibody (**ab64161**) at 1/2000 dilution + Recombinant Human MYL9 protein (ab104014) at 0.1 µg

### Secondary

Goat Anti-Rabbit IgG H&L (HRP) preadsorbed (**ab97080**) at 1/5000 dilution

Developed using the ECL technique.

Performed under reducing conditions.

**Exposure time:** 4 minutes

**Please note:** All products are "FOR RESEARCH USE ONLY. NOT FOR USE IN DIAGNOSTIC PROCEDURES"

### Our Abpromise to you: Quality guaranteed and expert technical support

- Replacement or refund for products not performing as stated on the datasheet
- Valid for 12 months from date of delivery
- Response to your inquiry within 24 hours
- We provide support in Chinese, English, French, German, Japanese and Spanish
- Extensive multi-media technical resources to help you
- We investigate all quality concerns to ensure our products perform to the highest standards

If the product does not perform as described on this datasheet, we will offer a refund or replacement. For full details of the Abpromise, please visit <https://www.abcam.cn/abpromise> or contact our technical team.

### Terms and conditions

- Guarantee only valid for products bought direct from Abcam or one of our authorized distributors