

Recombinant Human Mucin 5AC protein (Tagged) ab114218

1 图像

描述	
产品名称	重组人Mucin 5AC蛋白(Tagged)
表达系统	Wheat germ
Accession	<b>P98088</b>
蛋白长度	Protein fragment
无动物成分	No
性质	Recombinant
种属	Human
序列	NQSTCAVYHRSLIIQQQGCSSSEPVRLAYCRGNCGDSSSMYS LEGNTVEH RCQCCQELRTSLRNVTLHCTDGSSRAFSYTEVEECGCMGRRC PAPGDTQH
氨基酸	5528 to 5627
标签	GST tag N-Terminus

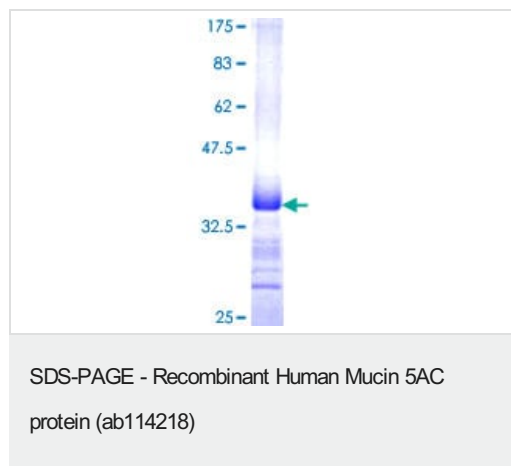
技术指标	
Our <b>Abpromise guarantee</b> covers the use of <b>ab114218</b> in the following tested applications.	
The application notes include recommended starting dilutions; optimal dilutions/concentrations should be determined by the end user.	
应用	ELISA SDS-PAGE Western blot
形式	Liquid
补充说明	

制备和贮存	
稳定性和存储	Shipped on dry ice. Upon delivery aliquot and store at -80°C. Avoid freeze / thaw cycles. pH: 8.00 Constituents: 0.3% Glutathione, 0.79% Tris HCl

## 常规信息

功能	Gel-forming glycoprotein of gastric and respiratory tract epithelia that protects the mucosa from infection and chemical damage by binding to inhaled microorganisms and particles that are subsequently removed by the mucociliary system.
组织特异性	Highly expressed in surface mucosal cells of respiratory tract and stomach epithelia. Overexpressed in a number of carcinomas. Also expressed in Barrett's esophagus epithelium and in the proximal duodenum.
序列相似性	Contains 1 CTCK (C-terminal cystine knot-like) domain. Contains 3 TIL (trypsin inhibitory-like) domains. Contains 4 VWFC domains. Contains 4 VWFD domains.
结构域	The cysteine residues in the Cys-rich subdomain repeats are not involved in disulfide bonding.
翻译后修饰	C-, O- and N-glycosylated. O-glycosylated on the Thr-/Ser-rich tandem repeats. C-mannosylation in the Cys-rich subdomains may be required for proper folding of these regions and for export from the endoplasmic reticulum during biosynthesis. Proteolytic cleavage in the C-terminal is initiated early in the secretory pathway and does not involve a serine protease. The extent of cleavage is increased in the acidic parts of the secretory pathway. Cleavage generates a reactive group which could link the protein to a primary amide.
细胞定位	Secreted.

## 图片



ab114218 analysed on a 12.5% SDS-PAGE gel stained with Coomassie Blue.

**Please note:** All products are "FOR RESEARCH USE ONLY. NOT FOR USE IN DIAGNOSTIC PROCEDURES"

## Our Abpromise to you: Quality guaranteed and expert technical support

- Replacement or refund for products not performing as stated on the datasheet
- Valid for 12 months from date of delivery
- Response to your inquiry within 24 hours
- We provide support in Chinese, English, French, German, Japanese and Spanish

- Extensive multi-media technical resources to help you
- We investigate all quality concerns to ensure our products perform to the highest standards

If the product does not perform as described on this datasheet, we will offer a refund or replacement. For full details of the Abpromise, please visit <https://www.abcam.cn/abpromise> or contact our technical team.

#### **Terms and conditions**

---

- Guarantee only valid for products bought direct from Abcam or one of our authorized distributors