

Recombinant Human MTR protein ab152546

1 图像

描述	
产品名称	重组人MTR蛋白
表达系统	Wheat germ
Accession	<u>Q99707</u>
蛋白长度	Protein fragment
无动物成分	No
性质	Recombinant
种属	Human
序列	RDYLGLFAVACFGVEELSKAYEDDGDDYSSIMVKALGDRLAE AFAEELHE RVRRELWAYCGSEQLDVADLRRLRYKGIRPAPGYPSQPDHTE KLTMWRLA DIEQSTGIRL
预测分子量	38 kDa including tags
氨基酸	1094 to 1203

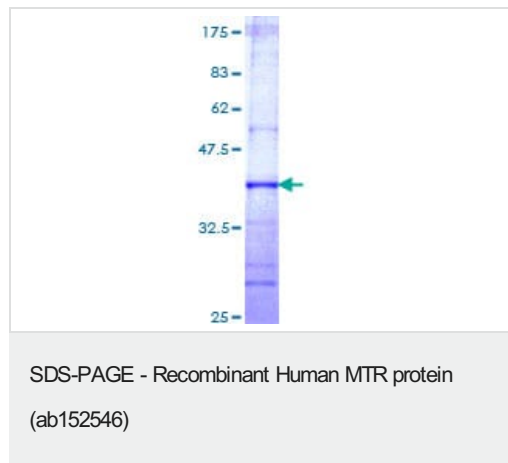
技术指标	
Our <b>Abpromise guarantee</b> covers the use of <b>ab152546</b> in the following tested applications.	
The application notes include recommended starting dilutions; optimal dilutions/concentrations should be determined by the end user.	
应用	ELISA SDS-PAGE Western blot
形式	Liquid
补充说明	

制备和贮存	
稳定性和存储	Shipped on dry ice. Upon delivery aliquot and store at -80°C. Avoid freeze / thaw cycles. pH: 8.00 Constituents: 0.31% Glutathione, 0.79% Tris HCl

## 常规信息

相关性	MTR encodes the enzyme 5-methyltetrahydrofolate-homocysteine methyltransferase. This enzyme, also known as cobalamin-dependent methionine synthase, catalyzes the final step in methionine biosynthesis. Mutations in MTR have been identified as the underlying cause of methylcobalamin deficiency complementation group G.
细胞定位	Cytoplasmic

## 图片



12.5% SDS-PAGE analysis of ab152546 stained with Coomassie Blue.

**Please note:** All products are "FOR RESEARCH USE ONLY. NOT FOR USE IN DIAGNOSTIC PROCEDURES"

## Our Abpromise to you: Quality guaranteed and expert technical support

- Replacement or refund for products not performing as stated on the datasheet
- Valid for 12 months from date of delivery
- Response to your inquiry within 24 hours
- We provide support in Chinese, English, French, German, Japanese and Spanish
- Extensive multi-media technical resources to help you
- We investigate all quality concerns to ensure our products perform to the highest standards

If the product does not perform as described on this datasheet, we will offer a refund or replacement. For full details of the Abpromise, please visit <https://www.abcam.cn/abpromise> or contact our technical team.

## Terms and conditions

- Guarantee only valid for products bought direct from Abcam or one of our authorized distributors