

Recombinant Human MTHFD1 protein ab116852

1 图像

描述

产品名称	重组人MTHFD1蛋白
表达系统	Wheat germ
Accession	<u>P11586</u>
蛋白长度	Full length protein
无动物成分	No
性质	Recombinant
种属	Human
序列	

MAPAEILNGKEISAQIRARLKNQVTQLKEQVPGFTPRLAILQ
VGNRDDSN
LYINVKLKAAEEIGIKATHIKLPRTTTESEVMKYITSLNEDS
TVHGFLVQ
LPLDSENSINTEEVINAI APEKDVDGLTSINAGRLARGDLND
CFIPCTPK
GCLELIKETGVPIAGRHAVVVGRSKIVGAPMHDLLLWNNATV
TTCHSKTA
HLDEEVNKGDILVVATGQPEMVKGWIKPGAIVIDCGINYVP
DDKKPNGR
KVVGDVAYDEAKERASFITPVPGGVGPMTVAMLMQSTVESAK
RFLEKFKP
GKWMIQYNNLNLKTPVPSDIDISRCKPKPIGKLAREIGLLS
EEVELYGE
TKAKVLLSALERLKHDPDGKYVVVTGITPTPLGEGKSTTTIG
LVQALGAH
LYQNVFACVRQPSQGPTFGIKGGAAGGGYSQVIPMEEFNLHL
TGDIAIT
AANNLVAAAIDARIFHELTQTDKALFNRLVPSVNGVRRFSDI
QIRRLKRL
GIEKTDPTTLTDEEINRFARLDIDPETITWQRVLDTNDRFLR
KITIGQAP
TEKGHTRTAQFDISVASEIMAVLALTTSLDMRERLGKMVVA
SSKKGEPV
SAEDLGVSGALTVLMKDAIKPNLMQTLEGTPVVFHAGPFANI
AHGNSSII
ADQIALKLVGPEGFVVTEAGFGADIGMEKFFNIKCRYSGLCP
HVVVLVAT

VRALKMHGGGPTVTAGLPLPKAYIQENLELVEKGFNSLKKQI
ENARMFGI
PVVVAVNAFKTDESELDLISRLSREHGAFDAVKCTHWAEGG
KGALALAQ
AVQRAAQAPSSFQLLYDLKLPVEDKIRIIAQKIYGADDIELL
PEAQHKAE
VYTKQGFGLPICMAKTHLSLSHNPEQKGVPTGFILPIRDIR
ASVGAGFL
YPLVGTMTMPGLPTRPCFYDIDLDPETEQVNGLF

预测分子量 129 kDa including tags
氨基酸 1 to 935

技术指标

Our **Abpromise guarantee** covers the use of **ab116852** in the following tested applications.

The application notes include recommended starting dilutions; optimal dilutions/concentrations should be determined by the end user.

应用 ELISA
SDS-PAGE
Western blot

形式 Liquid

制备和贮存

稳定性和存储 Shipped on dry ice. Upon delivery aliquot and store at -80°C. Avoid freeze / thaw cycles.
pH: 8.00
Constituents: 0.3% Glutathione, 0.79% Tris HCl

常规信息

组织特异性 Ubiquitous.

通路 One-carbon metabolism; tetrahydrofolate interconversion.

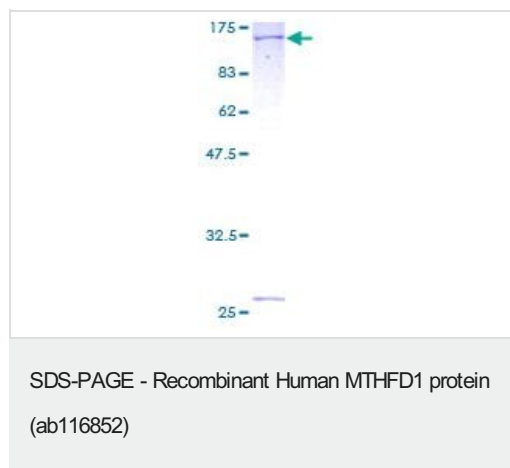
疾病相关 Defects in MTHFD1 may be a cause of susceptibility to folate-sensitive neural tube defects (folate-sensitive NTD) [MIM:601634]. The most common NTDs are open spina bifida (myelomeningocele) and anencephaly. Genetic defects in MTHFD1 may affect the risk of spina bifida via the maternal rather than the embryonic genotype.
Genetic variation in MTHFD1 could be associated with susceptibility to colorectal cancer (CRC) [MIM:114500].

序列相似性 In the N-terminal section; belongs to the tetrahydrofolate dehydrogenase/cyclohydrolase family.
In the C-terminal section; belongs to the formate--tetrahydrofolate ligase family.

结构域 This trifunctional enzyme consists of two major domains: an N-terminal part containing the methylene-THF dehydrogenase and cyclohydrolase activities and a larger C-terminal part containing formyl-THF synthetase activity.

细胞定位 Cytoplasm.

图片



12.5% SDS-PAGE showing ab116852 at approximately 128.59kDa; stained with Coomassie Blue.

Please note: All products are "FOR RESEARCH USE ONLY. NOT FOR USE IN DIAGNOSTIC PROCEDURES"

Our Abpromise to you: Quality guaranteed and expert technical support

- Replacement or refund for products not performing as stated on the datasheet
- Valid for 12 months from date of delivery
- Response to your inquiry within 24 hours
- We provide support in Chinese, English, French, German, Japanese and Spanish
- Extensive multi-media technical resources to help you
- We investigate all quality concerns to ensure our products perform to the highest standards

If the product does not perform as described on this datasheet, we will offer a refund or replacement. For full details of the Abpromise, please visit <https://www.abcam.cn/abpromise> or contact our technical team.

Terms and conditions

- Guarantee only valid for products bought direct from Abcam or one of our authorized distributors