

Recombinant Human Mre11 protein ab114277

1 图像

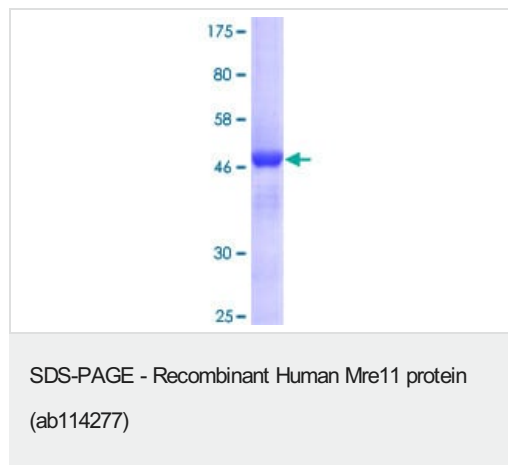
描述	
产品名称	重组人Mre11蛋白
表达系统	Wheat germ
Accession	<u>Q9BS79</u>
蛋白长度	Full length protein
无动物成分	No
性质	Recombinant
种属	Human
序列	MSTADALDDENTFKILVATDIHLGFMEKDAVRGNDTFVTLDE ILRLAQEN EVDFILLGGDLFHENKPSRKTLLHTCLELLRKYCMGDRPVQFE ILSDQSVN FGFSKFPWVNYQDGNLNISIPVFSLHGNHDDPTGADALCALD ILSCAGFV NHFGRSMSVEKIDISPVLLQKGRTKIALYGLGSIPDERLYRM FVNKKVTM LRPKED
预测分子量	49 kDa including tags
氨基酸	1 to 206
技术指标	
Our Abpromise guarantee covers the use of ab114277 in the following tested applications.	
The application notes include recommended starting dilutions; optimal dilutions/concentrations should be determined by the end user.	
应用	ELISA SDS-PAGE Western blot
形式	Liquid
制备和贮存	
稳定性和存储	Shipped on dry ice. Upon delivery aliquot and store at -80°C. Avoid freeze / thaw cycles. pH: 8.00

Constituents: 0.3% Glutathione, 0.79% Tris HCl

常规信息

功能	Component of the MRN complex, which plays a central role in double-strand break (DSB) repair, DNA recombination, maintenance of telomere integrity and meiosis. The complex possesses single-strand endonuclease activity and double-strand-specific 3'-5' exonuclease activity, which are provided by MRE11A. RAD50 may be required to bind DNA ends and hold them in close proximity. This could facilitate searches for short or long regions of sequence homology in the recombining DNA templates, and may also stimulate the activity of DNA ligases and/or restrict the nuclease activity of MRE11A to prevent nucleolytic degradation past a given point. The complex may also be required for DNA damage signaling via activation of the ATM kinase. In telomeres the MRN complex may modulate t-loop formation.
疾病相关	Defects in MRE11A are a cause of ataxia telangiectasia-like disorder (ATLD) [MIM:604391]. ATLD is a disease with the same clinical feature than ataxia-telangiectasia but with a somewhat milder clinical course.
序列相似性	Belongs to the MRE11/RAD32 family.
翻译后修饰	Phosphorylated upon DNA damage, probably by ATM or ATR.
细胞定位	Nucleus. Localizes to discrete nuclear foci after treatment with genotoxic agents.

图片



12.5% SDS-PAGE analysis of Mre11 protein (ab114277). Stained with Coomassie Blue.

Please note: All products are "FOR RESEARCH USE ONLY. NOT FOR USE IN DIAGNOSTIC PROCEDURES"

Our Abpromise to you: Quality guaranteed and expert technical support

- Replacement or refund for products not performing as stated on the datasheet
- Valid for 12 months from date of delivery
- Response to your inquiry within 24 hours
- We provide support in Chinese, English, French, German, Japanese and Spanish
- Extensive multi-media technical resources to help you

- We investigate all quality concerns to ensure our products perform to the highest standards

If the product does not perform as described on this datasheet, we will offer a refund or replacement. For full details of the Abpromise, please visit <https://www.abcam.cn/abpromise> or contact our technical team.

Terms and conditions

- Guarantee only valid for products bought direct from Abcam or one of our authorized distributors