

Recombinant Human Mob1A protein ab102026

1 图像

描述	
产品名称	重组人Mob1A蛋白
纯度	> 95 % SDS-PAGE. ab102026 was purified using conventional chromatography techniques.
表达系统	Escherichia coli
Accession	<u>Q9H8S9</u>
蛋白长度	Full length protein
无动物成分	No
性质	Recombinant
种属	Human
序列	MGSSHHHHHHSSGLVPRGSHMSFLFSSRSSKTFKPKKNIP EGSHQYELLK HAEATLGSGNLRQAVMLPEGEDLNEWIAVNTVDFFNQINMLY GTITEFCT EASCPVMSAGPRYEYHWADGTNIKKPIKCSAPKYIDYLMTWV QDQLDDET LFPSKIGVPFPKNFMSVAKTILKRLFRVYAHYHQHFDSVMQ LQEEAHLN TSFKHFIFFVQEFNLIDRRELAPLQELIEKLGSKDR
预测分子量	27 kDa including tags
氨基酸	1 to 216
标签	His tag N-Terminus

技术指标	
Our Abpromise guarantee covers the use of ab102026 in the following tested applications.	
The application notes include recommended starting dilutions; optimal dilutions/concentrations should be determined by the end user.	
应用	SDS-PAGE Mass Spectrometry
质谱法	MALDI-TOF
形式	Liquid
补充说明	This product was previously labelled as MOBK1B

制备和贮存

稳定性和存储

Shipped at 4°C. Store at +4°C short term (1-2 weeks). Upon delivery aliquot. Store at -20°C or -80°C. Avoid freeze / thaw cycle.

pH: 8.00

Constituents: 0.077% DTT, 0.316% Tris HCl, 30% Glycerol (glycerin, glycerine), 1.16% Sodium chloride

常规信息

功能

Activator of LATS1/2 in the Hippo signaling pathway which plays a pivotal role in organ size control and tumor suppression by restricting proliferation and promoting apoptosis. The core of this pathway is composed of a kinase cascade wherein MST1/MST2, in complex with its regulatory protein SAV1, phosphorylates and activates LATS1/2 in complex with its regulatory protein MOB1, which in turn phosphorylates and inactivates YAP1 oncoprotein and WWTR1/TAZ. Phosphorylation of YAP1 by LATS1/2 inhibits its translocation into the nucleus to regulate cellular genes important for cell proliferation, cell death, and cell migration. Stimulates the kinase activity of STK38 and STK38L.

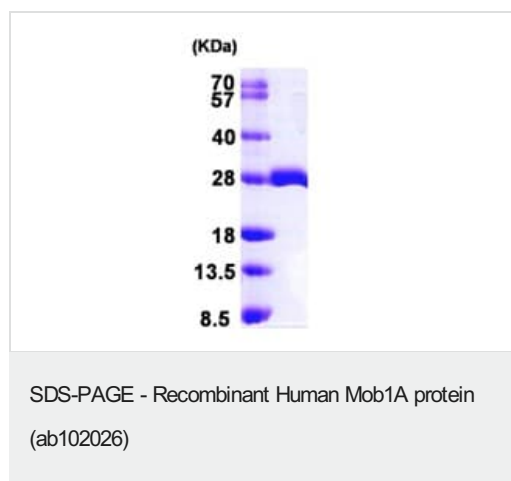
组织特异性

Adrenal gland, bone marrow, brain, placenta, prostate, salivary gland, skeletal muscle, testis, thymus, thyroid gland, heart, spinal cord, fetal brain and fetal liver.

序列相似性

Belongs to the MOB1/phocein family.

图片



15% SDS-PAGE analysis of ab102026 (3µg)

Please note: All products are "FOR RESEARCH USE ONLY. NOT FOR USE IN DIAGNOSTIC PROCEDURES"

Our Abpromise to you: Quality guaranteed and expert technical support

- Replacement or refund for products not performing as stated on the datasheet
- Valid for 12 months from date of delivery

- Response to your inquiry within 24 hours
- We provide support in Chinese, English, French, German, Japanese and Spanish
- Extensive multi-media technical resources to help you
- We investigate all quality concerns to ensure our products perform to the highest standards

If the product does not perform as described on this datasheet, we will offer a refund or replacement. For full details of the Abpromise, please visit <https://www.abcam.cn/abpromise> or contact our technical team.

Terms and conditions

- Guarantee only valid for products bought direct from Abcam or one of our authorized distributors