

Recombinant human MLK3 protein ab125630

3 图像

描述

产品名称	重组人MLK3蛋白
生物活性	The specific activity of MLK3 was determined to be 9.5 nmol/min/mg.
纯度	> 75 % Densitometry. 75% by Densitometry. Affinity purified.
表达系统	Baculovirus infected Sf9 cells
Accession	<u>Q16584</u>
蛋白长度	Protein fragment
无动物成分	No
性质	Recombinant
种属	Human
预测分子量	83 kDa including tags
氨基酸	1 to 488

技术指标

Our **Abpromise guarantee** covers the use of **ab125630** in the following tested applications.

The application notes include recommended starting dilutions; optimal dilutions/concentrations should be determined by the end user.

应用	Western blot Functional Studies SDS-PAGE
形式	Liquid
补充说明	<u>ab64311</u> (Myelin Basic Protein protein) can be utilized as a substrate for assessing kinase activity

制备和贮存

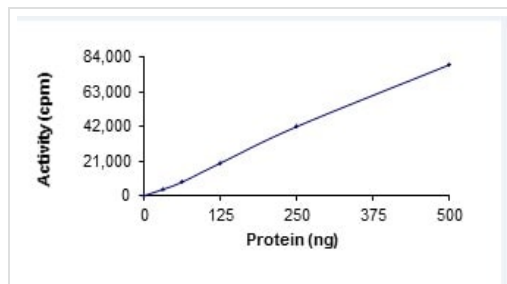
稳定性和存储	Shipped on dry ice. Upon delivery aliquot and store at -80°C. Avoid freeze / thaw cycles. pH: 7.50 Constituents: 0.31% Glutathione, 0.002% PMSF, 0.004% DTT, 0.79% Tris HCl, 0.003% EDTA, 25% Glycerol (glycerin, glycerine), 0.88% Sodium chloride
--------	---

This product is an active protein and may elicit a biological response in vivo, handle with caution.

常规信息

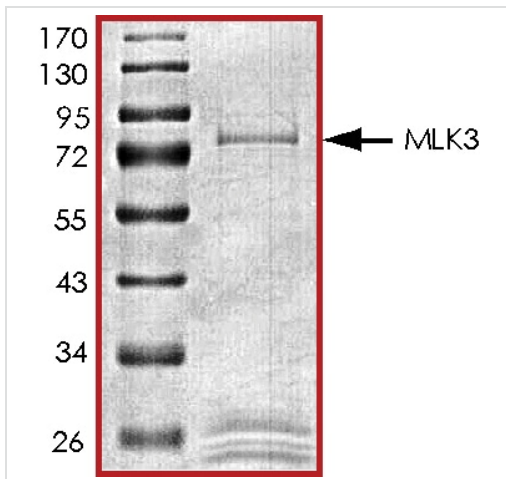
功能	Activates the JUN N-terminal pathway. Required for serum-stimulated cell proliferation and for mitogen and cytokine activation of MAPK14 (p38), MAPK3 (ERK) and MAPK8 (JNK1). Plays a role in mitogen-stimulated phosphorylation and activation of BRAF, but does not phosphorylate BRAF directly. Influences microtubule organization during the cell cycle.
组织特异性	Expressed in a wide variety of normal and neoplastic tissues including fetal lung, liver, heart and kidney, and adult lung, liver, heart, kidney, placenta, skeletal muscle, pancreas and brain.
序列相似性	Belongs to the protein kinase superfamily. STE Ser/Thr protein kinase family. MAP kinase kinase kinase subfamily. Contains 1 protein kinase domain. Contains 1 SH3 domain.
翻译后修饰	Autophosphorylation on serine and threonine residues within the activation loop plays a role in enzyme activation. Thr-277 is likely to be the main autophosphorylation site. Phosphorylation of Ser-555 and Ser-556 is induced by CDC42.
细胞定位	Cytoplasm > cytoskeleton > centrosome. Location is cell cycle dependent.

图片



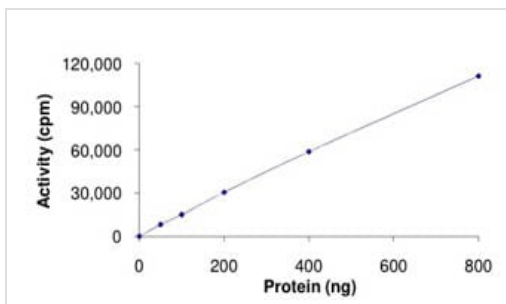
Functional Studies - Recombinant human MLK3 protein (ab125630)

The specific activity of MLK3 (ab125630) was determined to be 11 nmol /min/mg as per activity assay protocol.



SDS PAGE analysis of ab125630

SDS-PAGE - Recombinant human MLK3 protein (ab125630)



The specific activity of MLK3 was determined to be 9.5 nmol /min/mg.

Functional Studies - Recombinant human MLK3 protein (ab125630)

Please note: All products are "FOR RESEARCH USE ONLY. NOT FOR USE IN DIAGNOSTIC PROCEDURES"

Our Abpromise to you: Quality guaranteed and expert technical support

- Replacement or refund for products not performing as stated on the datasheet
- Valid for 12 months from date of delivery
- Response to your inquiry within 24 hours
- We provide support in Chinese, English, French, German, Japanese and Spanish
- Extensive multi-media technical resources to help you
- We investigate all quality concerns to ensure our products perform to the highest standards

If the product does not perform as described on this datasheet, we will offer a refund or replacement. For full details of the Abpromise, please visit <https://www.abcam.cn/abpromise> or contact our technical team.

Terms and conditions

- Guarantee only valid for products bought direct from Abcam or one of our authorized distributors