

### Recombinant human MLK2 protein ab125562

#### 5 图像

#### 描述

产品名称	重组人MLK2蛋白
生物活性	The specific activity of ab125562 was determined to be 48 nmol/min/mg.
纯度	> 85 % Densitometry. Purity was determined to be >85% by densitometry.
表达系统	Baculovirus infected Sf9 cells
Accession	<b><u>Q02779</u></b>
蛋白长度	Protein fragment
无动物成分	No
性质	Recombinant
种属	Human
预测分子量	76 kDa including tags
氨基酸	1 to 446

#### 技术指标

Our **Abpromise guarantee** covers the use of **ab125562** in the following tested applications.

The application notes include recommended starting dilutions; optimal dilutions/concentrations should be determined by the end user.

应用	Western blot Functional Studies SDS-PAGE
形式	Liquid
补充说明	<b><u>ab64311</u></b> (Myelin Basic Protein protein) can be utilized as a substrate for assessing kinase activity

#### 制备和贮存

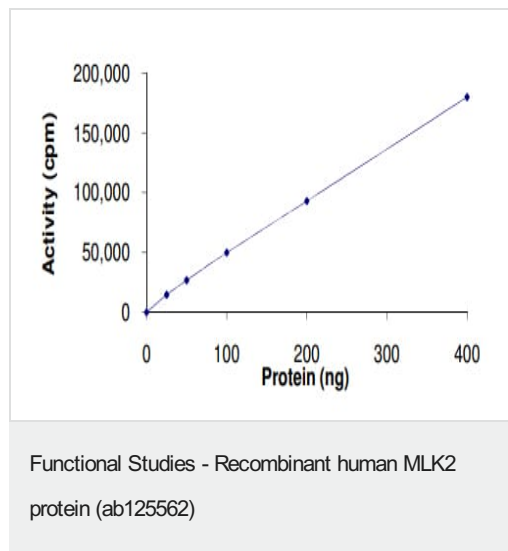
稳定性和存储	Shipped on dry ice. Upon delivery aliquot and store at -80°C. Avoid freeze / thaw cycles. pH: 7.50 Constituents: 0.31% Glutathione, 0.002% PMSF, 0.004% DTT, 0.79% Tris HCl, 0.003% EDTA, 25% Glycerol (glycerin, glycerine), 0.88% Sodium chloride
--------	---

This product is an active protein and may elicit a biological response in vivo, handle with caution.

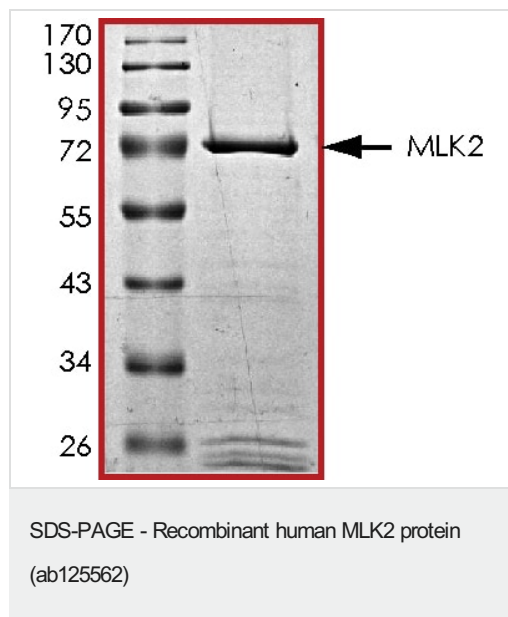
## 常规信息

功能	Activates the JUN N-terminal pathway.
组织特异性	Expressed in brain and skeletal muscle.
序列相似性	Belongs to the protein kinase superfamily. STE Ser/Thr protein kinase family. MAP kinase kinase kinase subfamily. Contains 1 protein kinase domain. Contains 1 SH3 domain.
翻译后修饰	Autophosphorylation on serine and threonine residues within the activation loop plays a role in enzyme activation.

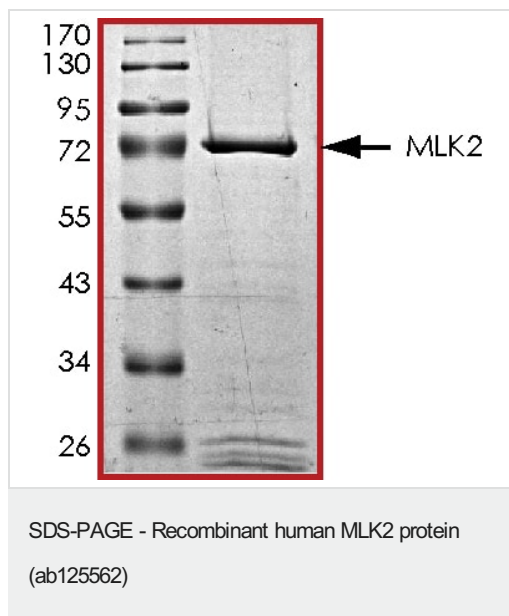
## 图片



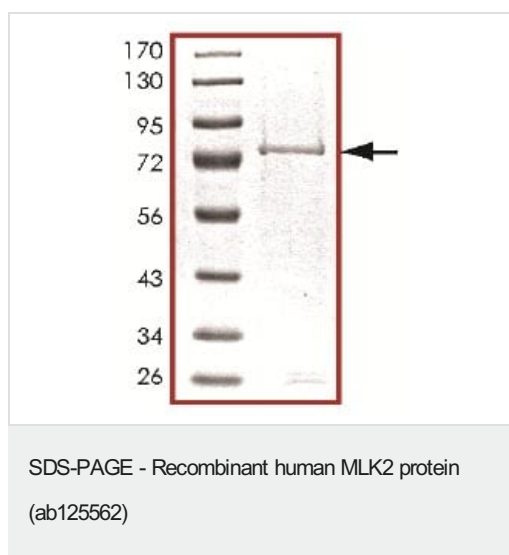
The specific activity of MLK2 (ab125562) was determined to be 50 nmol/min/mg as per activity assay protocol



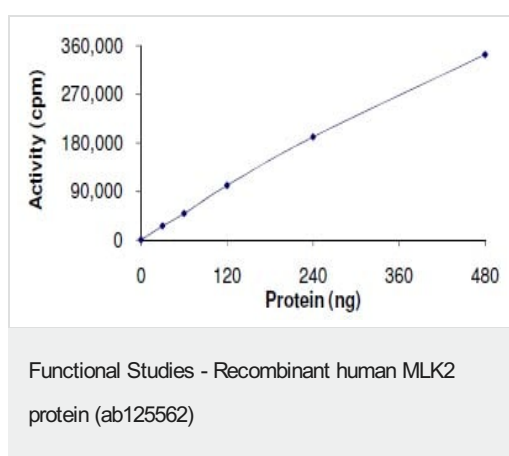
SDS PAGE analysis of ab125562



SDS PAGE analysis of ab125562



SDS-PAGE analysis of ab125562.



The specific activity of ab125562 was determined to be 48 nmol/min/mg by Kinase Assay.

**Please note:** All products are "FOR RESEARCH USE ONLY. NOT FOR USE IN DIAGNOSTIC PROCEDURES"

**Our Abpromise to you: Quality guaranteed and expert technical support**

- Replacement or refund for products not performing as stated on the datasheet
- Valid for 12 months from date of delivery
- Response to your inquiry within 24 hours
- We provide support in Chinese, English, French, German, Japanese and Spanish
- Extensive multi-media technical resources to help you
- We investigate all quality concerns to ensure our products perform to the highest standards

If the product does not perform as described on this datasheet, we will offer a refund or replacement. For full details of the Abpromise, please visit <https://www.abcam.cn/abpromise> or contact our technical team.

#### **Terms and conditions**

---

- Guarantee only valid for products bought direct from Abcam or one of our authorized distributors