

# Recombinant Human MIF protein ab51096

## 1 图像

### 描述

---

产品名称	重组人MIF蛋白
纯度	> 95 % SDS-PAGE. Recombinant human MIF, fused to His-tag at N-terminus, was cloned into an <i>E. coli</i> expression vector and was purified to apparent homogeneity by using conventional column chromatography techniques.
表达系统	Escherichia coli
Accession	<b><u>P14174</u></b>
蛋白长度	Full length protein
无动物成分	No
性质	Recombinant
种属	Human
序列	MRGSHHHHHH GMASMTGGQQ MGRDLYDDDD KDRWGSMPMF IVNTNVPRAS VPDGFLSELT QQLAQATGKP PQYIAVHVVP DQLMAFGSS EPCALCSLHS IGKIGGAQNR SYSKLLCGLL AERLRISPDR VYINYYDMNA ANVGWNNSTF A
预测分子量	17 kDa including tags
氨基酸	1 to 115
标签	His tag N-Terminus

### 技术指标

---

Our **Abpromise guarantee** covers the use of **ab51096** in the following tested applications.

The application notes include recommended starting dilutions; optimal dilutions/concentrations should be determined by the end user.

应用	SDS-PAGE
形式	Liquid

### 制备和贮存

---

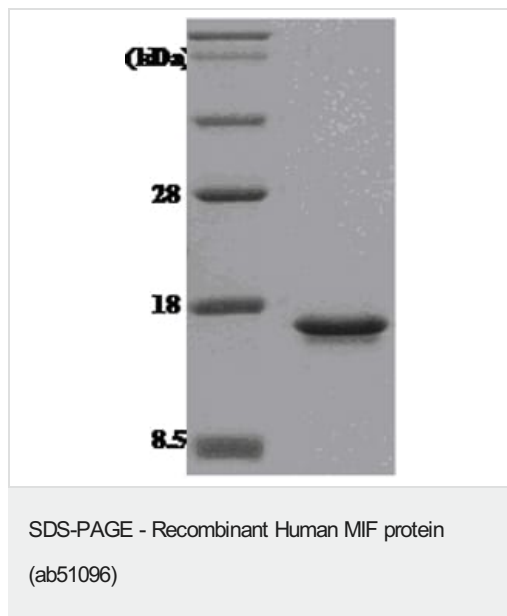
稳定性和存储	Shipped at 4°C. Upon delivery aliquot and store at -20°C. Avoid freeze / thaw cycles. pH: 7.40
--------	---

Constituent: PBS

## 常规信息

<b>功能</b>	Pro-inflammatory cytokine. Involved in the innate immune response to bacterial pathogens. The expression of MIF at sites of inflammation suggests a role as mediator in regulating the function of macrophages in host defense. Counteracts the anti-inflammatory activity of glucocorticoids. Has phenylpyruvate tautomerase and dopachrome tautomerase activity (in vitro), but the physiological substrate is not known. It is not clear whether the tautomerase activity has any physiological relevance, and whether it is important for cytokine activity.
<b>疾病相关</b>	Genetic variations in MIF are associated with susceptibility to rheumatoid arthritis systemic juvenile (RASJ) [MIM:604302]. An inflammatory articular disorder with systemic-onset beginning before the age of 16. It represents a subgroup of juvenile arthritis associated with severe extraarticular features and occasionally fatal complications. During active phases of the disorder, patients display a typical daily spiking fever, an evanescent macular rash, lymphadenopathy, hepatosplenomegaly, serositis, myalgia and arthritis.
<b>序列相似性</b>	Belongs to the MIF family.
<b>细胞定位</b>	Secreted. Cytoplasm. Does not have a cleavable signal sequence and is secreted via a specialized, non-classical pathway. Secreted by macrophages upon stimulation by bacterial lipopolysaccharide (LPS), or by M.tuberculosis antigens.

## 图片



ab51096 in 15% SDS-PAGE

**Please note:** All products are "FOR RESEARCH USE ONLY. NOT FOR USE IN DIAGNOSTIC PROCEDURES"

## Our Abpromise to you: Quality guaranteed and expert technical support

- Replacement or refund for products not performing as stated on the datasheet
- Valid for 12 months from date of delivery

- Response to your inquiry within 24 hours
- We provide support in Chinese, English, French, German, Japanese and Spanish
- Extensive multi-media technical resources to help you
- We investigate all quality concerns to ensure our products perform to the highest standards

If the product does not perform as described on this datasheet, we will offer a refund or replacement. For full details of the Abpromise, please visit <https://www.abcam.cn/abpromise> or contact our technical team.

### **Terms and conditions**

---

- Guarantee only valid for products bought direct from Abcam or one of our authorized distributors