

# Recombinant Human Methionyl Aminopeptidase 1/MAP 1 protein ab124578

1 图像

描述	
产品名称	重组人Methionyl Aminopeptidase 1/MAP 1蛋白
纯度	> 90 % SDS-PAGE. ab124578 is purified using conventional chromatography techniques.
表达系统	Escherichia coli
Accession	<b><u>P53582</u></b>
蛋白长度	Full length protein
无动物成分	No
性质	Recombinant
种属	Human
序列	MGSSHHHHHH SSGLVPRGSH MGSMAAVETR VCETDGCSS E AKLQCPTCIK LGIQGSYFCS QECFKGSWAT HKLLHKKAKD EKAKREVSSW TVEGDINTDP WAGYRYTGKL RPHYPLMPTR PVPSYIQRPD YADHPLGMSE SEQALKGTSQ IKLLSSEDIE GMRLVCRLAR EVLDVAAGMI KPGVTTEEID HAVHLACIAR NCYPSPLNYY NFPKSCCTSV NEVICHGIPD RRPLQEGDIV NVDITLYRNG YHGDINETFF VGEVDDGARK LVQTTYECLM QAIDAVKPGV RYRELGNIIQ KHAQANGFSV VRSYCGHGIH KLFHTAPNVP HYAKNKAVGV MKSGHVFTIE PMICEGGWQD ETWPDGWTAV TRDGKRSAQF EHTLLVTDTG CEILTRRLDS ARPHFMSQF
预测分子量	46 kDa including tags
氨基酸	1 to 386
标签	His tag N-Terminus

技术指标

Our **Abpromise guarantee** covers the use of **ab124578** in the following tested applications.

The application notes include recommended starting dilutions; optimal dilutions/concentrations should be determined by the end user.

应用	SDS-PAGE
	Mass Spectrometry
质谱法	MALDI-TOF
形式	Liquid
补充说明	This product was previously labelled as Methionyl Aminopeptidase 1

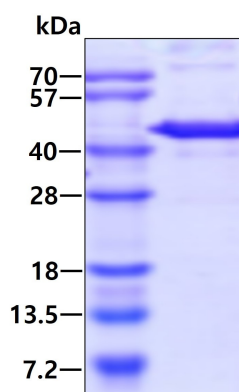
## 制备和贮存

稳定性和存储	<p>Shipped at 4°C. Upon delivery aliquot and store at -20°C or -80°C. Avoid repeated freeze / thaw cycles.</p> <p>pH: 8.00</p> <p>Constituents: 0.002% PMSF, 0.05% DTT, 0.32% Tris HCl, 40% Glycerol (glycerin, glycerine), 1.17% Sodium chloride</p>
--------	-------------------------------------------------------------------------------------------------------------------------------------------------------------------------------------------------------------------------------------------------------

## 常规信息

功能	Removes the amino-terminal methionine from nascent proteins. Required for normal progression through the cell cycle.
序列相似性	Belongs to the peptidase M24A family.

## 图片



3ug by SDS-PAGE under reducing condition and visualized by coomassie blue stain.

SDS-PAGE - Recombinant Human Methionyl  
Aminopeptidase 1/MAP 1 protein (ab124578)

**Please note:** All products are "FOR RESEARCH USE ONLY. NOT FOR USE IN DIAGNOSTIC PROCEDURES"

**Our Abpromise to you: Quality guaranteed and expert technical support**

- Replacement or refund for products not performing as stated on the datasheet
- Valid for 12 months from date of delivery
- Response to your inquiry within 24 hours
- We provide support in Chinese, English, French, German, Japanese and Spanish
- Extensive multi-media technical resources to help you
- We investigate all quality concerns to ensure our products perform to the highest standards

If the product does not perform as described on this datasheet, we will offer a refund or replacement. For full details of the Abpromise, please visit <https://www.abcam.cn/abpromise> or contact our technical team.

#### **Terms and conditions**

---

- Guarantee only valid for products bought direct from Abcam or one of our authorized distributors