

Recombinant Human MCM6 protein ab114758

1 图像

描述	
产品名称	重组人MCM6蛋白
表达系统	Wheat germ
Accession	<u>Q14566</u>
蛋白长度	Full length protein
无动物成分	No
性质	Recombinant
种属	Human
序列	MDLAAAEPGAGSQHLEVRDEVAEKCQKLFLDFLEEFQSSDG EIKYLQLA EELIRPERNTLVVSFVDLEQFNQQLSTTIQEEFYRVYPYLCR ALKTFVKD RKEIPLAKDFYVAFQDLPTRHKIRELTSSRIGLLTRISGQVV RTHPVHPE LVSGTFLCLDCQTVIRDVEQQFKYTQPNICRNPVCANRRRFL LDTNKSFR VDFQKVRIQETQAELPRGSIPRSLEVILRAEAVESAQAGDKC DFTGTLIV VPDVSKLSTPGARAETNSRVSGVDGYETEGIRGLRALGVRDL SYRLVFLA CCVAPTNPFRGGKELRDEEQTAESIKNQMTVKEWEKVFEMSQ DKNLYHNL CTSLFPTIHGNDEVKRGVLLMLFGGVPKTTGEGTSLRGDINV CIVGDPST AKSQFLKHVEEFSPRAVYTSGKASSAAGLTAAVVRDEESHEF VIEAGALM LADNGVCCIDEFDKMDVRDQVAIHEAMEQQTISITKAGVKAT LNARTSIL AAANPISGHYDRSKSLKQNINLSAPIMSRFDLFFILVDECNE VTDYAIAR RIVDLHSRIEESIDRVYSLDDIRRYLLFARQFKPKISKESED FIVEQYKH LRQRDGSQVTKSSWRITVRQLESMIRLSEAMARMHCCDEVQP KHVKEAFR LLNKSIIRVETPDVNLDQEEIIQMEVDEGAGGINGHADSPAP VNGINGYN

EDINQESAPKASRLRGFSEYCRISNLIVLHLRKVEEEEDESA
LKRSELVN
WYLKEIESEIDSEEEELINKKRIIEKVIHRLTHYDHVLIELTQ
AGLKGSTE GSESYEEDPYLVVNPNYLLED

预测分子量 116 kDa including tags
氨基酸 1 to 821

技术指标

Our **Abpromise guarantee** covers the use of **ab114758** in the following tested applications.

The application notes include recommended starting dilutions; optimal dilutions/concentrations should be determined by the end user.

应用 ELISA
SDS-PAGE
Western blot
形式 Liquid

制备和贮存

稳定性和存储 Shipped on dry ice. Upon delivery aliquot and store at -80°C. Avoid freeze / thaw cycles.
pH: 8.00
Constituents: 0.3% Glutathione, 0.79% Tris HCl

常规信息

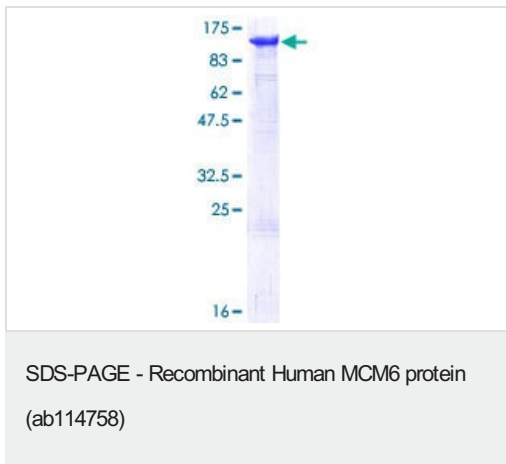
功能 Acts as component of the MCM2-7 complex (MCM complex) which is the putative replicative helicase essential for 'once per cell cycle' DNA replication initiation and elongation in eukaryotic cells. The active ATPase sites in the MCM2-7 ring are formed through the interaction surfaces of two neighboring subunits such that a critical structure of a conserved arginine finger motif is provided in trans relative to the ATP-binding site of the Walker A box of the adjacent subunit. The six ATPase active sites, however, are likely to contribute differentially to the complex helicase activity.

序列相似性 Belongs to the MCM family.
Contains 1 MCM domain.

翻译后修饰 Phosphorylated upon DNA damage, probably by ATM or ATR.

细胞定位 Nucleus. Binds to chromatin during G1 and detach from it during S phase.

图片



12.5% SDS-PAGE Stained with Coomassie Blue showing ab114758 at approximately 116.38kDa.

Please note: All products are "FOR RESEARCH USE ONLY. NOT FOR USE IN DIAGNOSTIC PROCEDURES"

Our Abpromise to you: Quality guaranteed and expert technical support

- Replacement or refund for products not performing as stated on the datasheet
- Valid for 12 months from date of delivery
- Response to your inquiry within 24 hours
- We provide support in Chinese, English, French, German, Japanese and Spanish
- Extensive multi-media technical resources to help you
- We investigate all quality concerns to ensure our products perform to the highest standards

If the product does not perform as described on this datasheet, we will offer a refund or replacement. For full details of the Abpromise, please visit <https://www.abcam.cn/abpromise> or contact our technical team.

Terms and conditions

- Guarantee only valid for products bought direct from Abcam or one of our authorized distributors