

Recombinant Human MC1-R protein ab152515

1 图像

描述

产品名称	重组人MC1-R蛋白
表达系统	Wheat germ
Accession	Q01726
蛋白长度	Full length protein
无动物成分	No
性质	Recombinant
种属	Human
序列	MAVQGSQRRLGSLNSTPTAIPQLGLAANQTGARCLEVSISD GLFLSLGL VSLVENALVVATIAKNRNLHSPMYCFICCLALSDLLVSGSNV LETAVILL LEAGALVARAAVLQQLDNVIDVITCSSMLSSLCFLGAIIVDR YISIFYAL RYHSTVTLPRARRAVAAIWVASVVFSTLFIAYYDHVAVLLCL VVFFLAML VLMVLYVHMLARACQHAQGIARLHKRQRPVHQGFGLKGAVT LTILLGIF FLCWGPFFLHLTLIVLCPEHPTCGCIFKNFNLFLALIICNAI IDPLIYAF HSQELRRTLKEVLTCWS
预测分子量	61 kDa including tags
氨基酸	1 to 317

技术指标

Our **Abpromise guarantee** covers the use of **ab152515** in the following tested applications.

The application notes include recommended starting dilutions; optimal dilutions/concentrations should be determined by the end user.

应用	ELISA SDS-PAGE Western blot
形式	Liquid
补充说明	This product was previously labelled as MC1 Receptor.

制备和贮存

稳定性和存储

Shipped on dry ice. Upon delivery aliquot and store at -80°C. Avoid freeze / thaw cycles.

pH: 8.00

Constituents: 0.31% Glutathione, 0.79% Tris HCl

常规信息

功能

Receptor for MSH (alpha, beta and gamma) and ACTH. The activity of this receptor is mediated by G proteins which activate adenylate cyclase.

组织特异性

Melanocytes and corticoadrenal tissue.

疾病相关

Genetic variations in MC1R are a cause of susceptibility to cutaneous malignant melanoma type 5 (CMM5) [MIM:613099]. Malignant melanoma is a malignant neoplasm of melanocytes, arising de novo or from a pre-existing benign nevus, which occurs most often in the skin but also may involve other sites.

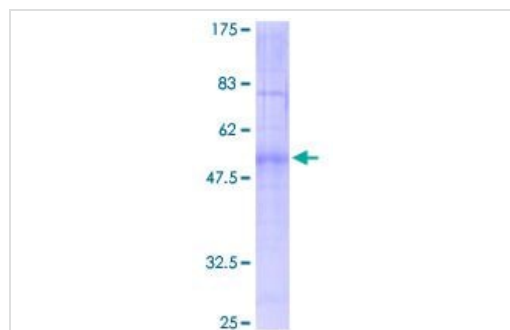
序列相似性

Belongs to the G-protein coupled receptor 1 family.

细胞定位

Cell membrane.

图片



12.5% SDS-PAGE analysis of ab152515 stained with Coomassie Blue.

SDS-PAGE - Recombinant Human MC1-R protein
(ab152515)

Please note: All products are "FOR RESEARCH USE ONLY. NOT FOR USE IN DIAGNOSTIC PROCEDURES"

Our Abpromise to you: Quality guaranteed and expert technical support

- Replacement or refund for products not performing as stated on the datasheet
- Valid for 12 months from date of delivery
- Response to your inquiry within 24 hours
- We provide support in Chinese, English, French, German, Japanese and Spanish

- Extensive multi-media technical resources to help you
- We investigate all quality concerns to ensure our products perform to the highest standards

If the product does not perform as described on this datasheet, we will offer a refund or replacement. For full details of the Abpromise, please visit <https://www.abcam.cn/abpromise> or contact our technical team.

Terms and conditions

- Guarantee only valid for products bought direct from Abcam or one of our authorized distributors