

Recombinant Human MBD1 protein ab152512

1 图像

描述	
产品名称	重组人MBD1蛋白
表达系统	Wheat germ
Accession	<u>Q9UIS9</u>
蛋白长度	Full length protein
无动物成分	No
性质	Recombinant
种属	Human
序列	MAEDWLDCPALGPGWKRREVFRKSGATCGRSDTYYSPTGDR IRSKVELT RYLGACDLTLFDFKQGILCYPAPKAHPVAVASKRKKPSRP AKTRKRQV GPQSGEVRKEAPRDETKADTDAPASFPAPGCCENCGISFSG DGTQRQRL KTLCKDCRAQRIAFNREQRMFKRVGCGECAACQVTEDCGACS TCLLQLPH DVASGLFCKCERRRCLRIVERSRGCGVCRGCQTQEDCGHCPI CLRPPRPG LRRQWKCVQRRCLRGKHARRKGGCDSKMAARRRPGAQPLPPP PPSQSPEP TEPHPRALAPSPPAEFIYYCVDEDELQPYTNRRQNRKCGACA ACLRRMDC GRCDFCCDKPKFGGSNQKRQKCRWRQCLQFAMKRLPSVWSE SEDGAGSP PPYRRRKRPSSARRHHLGPTLKPTLATRTAQPDHTQAPTKQE AGGGFVLP PPGTDLVFLREGASSPVQVPGPVAASTEALLQEAQCSGLSWV VALPQVKQ EKADTQDEWTPGTAVLTSPVLVPGCPSKAVDPGLPSVKQEPP DPEEDKEE NKDDSAASKLAPEEEEAGGAGTPVITEIFSLGGTRFRDТАVWLP RSKDLKKP GARKQ
预测分子量	93 kDa including tags
氨基酸	1 to 605
标签	GST tag N-Terminus

技术指标

Our **Abpromise guarantee** covers the use of **ab152512** in the following tested applications.

The application notes include recommended starting dilutions; optimal dilutions/concentrations should be determined by the end user.

应用	ELISA
	SDS-PAGE
	Western blot
形式	Liquid

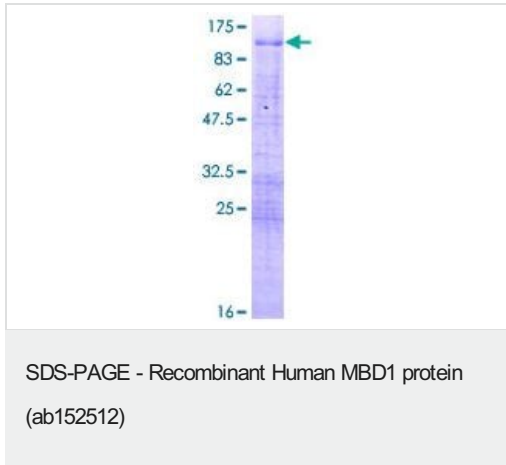
制备和贮存

稳定性和存储	Shipped on dry ice. Upon delivery aliquot and store at -80°C. Avoid freeze / thaw cycles. pH: 8.00 Constituents: 0.31% Glutathione, 0.79% Tris HCl
--------	--

常规信息

功能	Transcriptional repressor that binds CpG islands in promoters where the DNA is methylated at position 5 of cytosine within CpG dinucleotides. Binding is abolished by the presence of 7-mG that is produced by DNA damage by methylmethanesulfonate (MMS). Acts as transcriptional repressor and plays a role in gene silencing by recruiting AFT7IP, which in turn recruits factors such as the histone methyltransferase SETDB1. Probably forms a complex with SETDB1 and ATF7IP that represses transcription and couples DNA methylation and histone 'Lys-9' trimethylation. Isoform 1 and isoform 2 can also repress transcription from unmethylated promoters.
组织特异性	Widely expressed.
序列相似性	Contains 3 CXXC-type zinc fingers. Contains 1 MBD (methyl-CpG-binding) domain.
结构域	The methyl-CpG-binding domain (MBD) functions both in binding to methylated DNA and in protein interactions. The third CXXC-type zinc finger mediates binding to non-methylated CpG dinucleotides. The transcriptional repression domain (TRD) is involved in transcription repression and in protein interactions.
翻译后修饰	Sumoylated with SUMO1 by PIAS1 and PIAS3. Sumoylation affects transcriptional silencing by preventing the interaction with SETDB1. In contrast, sumoylation may increase interaction with AFT7IP. Phosphorylated upon DNA damage, probably by ATM or ATR.
细胞定位	Nucleus speckle. Chromosome. Nuclear, in a punctate pattern. Associated with euchromatic regions of the chromosomes, with pericentromeric regions on chromosome 1 and with telomeric regions from several chromosomes.

图片



12.5% SDS-PAGE analysis of ab152512 stained with Coomassie Blue.

Please note: All products are "FOR RESEARCH USE ONLY. NOT FOR USE IN DIAGNOSTIC PROCEDURES"

Our Abpromise to you: Quality guaranteed and expert technical support

- Replacement or refund for products not performing as stated on the datasheet
- Valid for 12 months from date of delivery
- Response to your inquiry within 24 hours
- We provide support in Chinese, English, French, German, Japanese and Spanish
- Extensive multi-media technical resources to help you
- We investigate all quality concerns to ensure our products perform to the highest standards

If the product does not perform as described on this datasheet, we will offer a refund or replacement. For full details of the Abpromise, please visit <https://www.abcam.cn/abpromise> or contact our technical team.

Terms and conditions

- Guarantee only valid for products bought direct from Abcam or one of our authorized distributors