

Recombinant human MAP3K8/COT protein ab55700

4 图像

描述	
产品名称	重组人MAP3K8/COT蛋白
生物活性	Specific activity: 1012 nmol/min/mg
纯度	> 75 % Densitometry. Affinity purified.
表达系统	Baculovirus infected Sf9 cells
Accession	<b><u>P46527</u></b>
蛋白长度	Protein fragment
无动物成分	No
性质	Recombinant
种属	Human
序列	MENLYASEEP AVYEPSLMTM CQDSNQNDER SKSLLLSGQE VPWLSSVRYG TVEDLLAFAN HISNTAKHFY GQR PQESGIL LNMVITPQNG RYQIDSDVLL IPWKLTyrNI GSDFIPRGAF GKVYLAQDIK TKKRMACKLI PVDQFKPSDV EIQACFRHEN IAELYGAVLW GETVHLFMEA GEGGSVLEKL ESCGPMREFE IIWVTKHVLK GLDFLHSKKV IHHDIKPSNI VFMSTKAVLV DFGLSVQMTE DVYFPKDLRG TEIYMSPEVI LCRGHSTKAD IYSLGATLIH MQTGTPPWVK RYPR SAYPSY LYIIHKQAPP LEDIADDCSP GMRELIEASL ERNP NHRPRA ADLLKHEALN PPREDQPR
预测分子量	70 kDa
氨基酸	30 to 397
标签	GST tag N-Terminus
技术指标	

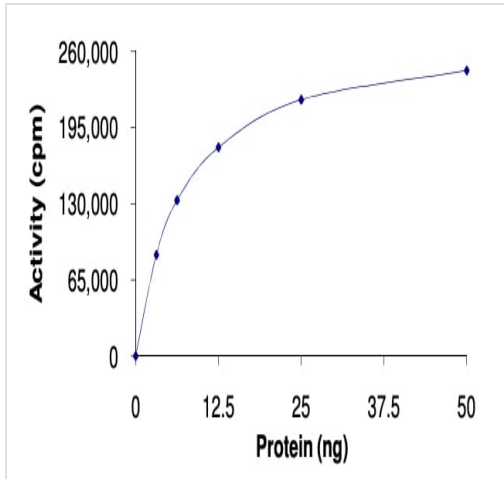
Our **Abpromise guarantee** covers the use of **ab55700** in the following tested applications.

The application notes include recommended starting dilutions; optimal dilutions/concentrations should be determined by the end user.

应用	SDS-PAGE
	Functional Studies

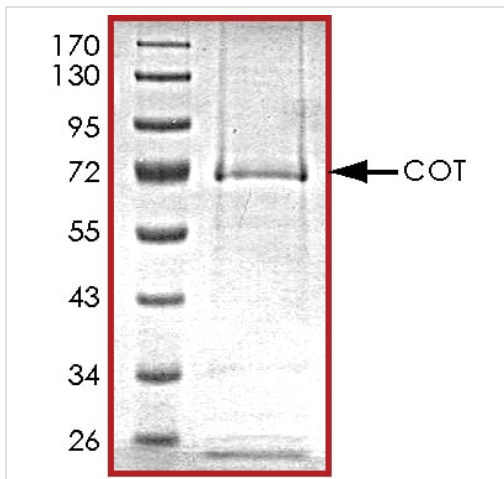
形式	Liquid
补充说明	<p><b>ab43623</b> (Human ERK1 full length protein) and <b>ab43614</b> (Human Myelin Basic Protein full length protein) can be utilized as a substrate for assessing kinase activity</p> <p>This product was previously labelled as MAP3K8</p>
制备和贮存	
稳定性和存储	<p>Shipped on dry ice. Upon delivery aliquot and store at -80°C. Avoid freeze / thaw cycles.</p> <p>pH: 7.50</p> <p>Constituents: 0.0038% EGTA, 0.00174% PMSF, 0.00385% DTT, 0.79% Tris HCl, 0.00292% EDTA, 25% Glycerol (glycerin, glycerine), 0.87% Sodium chloride</p> <p>This product is an active protein and may elicit a biological response in vivo, handle with caution.</p>
常规信息	
功能	Required for TLR4 activation of the MEK/ERK pathway. Able to activate NF-kappa-B 1 by stimulating proteasome-mediated proteolysis of NF-kappa-B 1/p105. Plays a role in the cell cycle. The longer form has some transforming activity, although it is much weaker than the activated cot oncoprotein.
组织特异性	Expressed in several normal tissues and human tumor-derived cell lines.
序列相似性	<p>Belongs to the protein kinase superfamily. STE Ser/Thr protein kinase family. MAP kinase kinase kinase subfamily.</p> <p>Contains 1 protein kinase domain.</p>
发展阶段	Isoform 1 is activated specifically during the S and G2/M phases of the cell cycle.
翻译后修饰	Autophosphorylated. Isoform 1 undergoes phosphorylation mainly on Ser residues, and isoform 2 on both Ser and Thr residues.
细胞定位	Cytoplasm.

图片



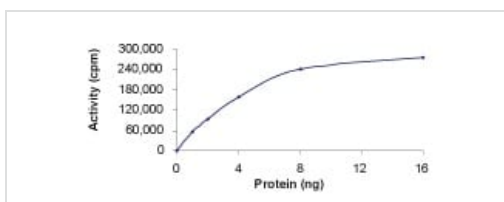
The specific activity of MAP3K8/COT (ab55700) was determined to be 1100 nmol/min/mg as per activity assay protocol

Functional Studies - Recombinant human  
MAP3K8/COT protein (ab55700)



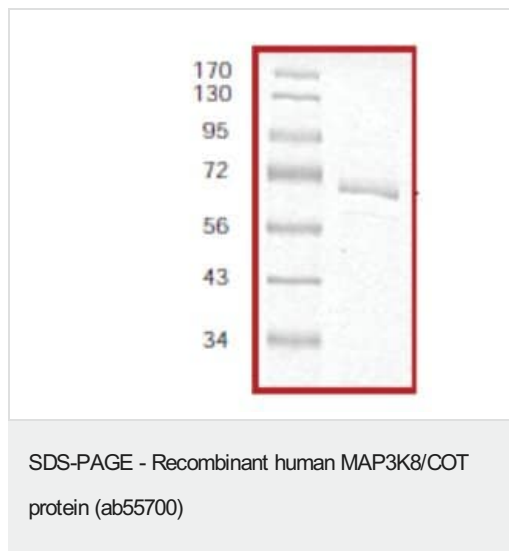
SDS PAGE analysis of ab55700

SDS-PAGE - Recombinant human MAP3K8/COT  
protein (ab55700)



Kinase activity plot using ab55700. Specific activity: 1012 nmol/min/mg.

Functional Studies - Recombinant human  
MAP3K8/COT protein (ab55700)



SDS-PAGE analysis of ab55700, with molecular weight markers.

Approximate molecular weight: 70kDa

**Please note:** All products are "FOR RESEARCH USE ONLY. NOT FOR USE IN DIAGNOSTIC PROCEDURES"

### Our Abpromise to you: Quality guaranteed and expert technical support

---

- Replacement or refund for products not performing as stated on the datasheet
- Valid for 12 months from date of delivery
- Response to your inquiry within 24 hours
- We provide support in Chinese, English, French, German, Japanese and Spanish
- Extensive multi-media technical resources to help you
- We investigate all quality concerns to ensure our products perform to the highest standards

If the product does not perform as described on this datasheet, we will offer a refund or replacement. For full details of the Abpromise, please visit <https://www.abcam.cn/abpromise> or contact our technical team.

### Terms and conditions

---

- Guarantee only valid for products bought direct from Abcam or one of our authorized distributors