

Recombinant Human MAP2 protein ab114686

1 图像

描述

产品名称	重组人MAP2蛋白	
表达系统	Wheat germ	
Accession	<u>P11137-2</u>	
蛋白长度	Full length protein	
无动物成分	No	
性质	Recombinant	
种属	Human	
序列		<p>MADERKDEAKAPHWTSAPL TEASAHSHPPPEIKDQGGAGEGLV RSANGFPY REDEEGAFGEHGSQGTYSNTKENGINGELTSADRETAEEVSA RIVQVVTA EAVAVLKGEQEKEAQHKDQTAALPLAAEETANLPPSPPPSPA SEQTVTVE EAAGGESALAPSVFKQAKDKVSDGVTKSPEKRSSLPRSSIL PPRRGVSG DRDENSFSLNSSISSARRTTRSEPIRRAGKSGTSTPTTPGS TAITPGTP PSYSSRTPGTPGTPSYPRTPHTPGTPKSAILVPSEKKVAIIR TPPKSPAT PKQLRLINQPLPDLKNVSKIGSTDNIKYQPKGQVQIVTKK IDLSHVTS KCGSLKNIRHRPGGGRVKIESVKLDFKEKAQAKVGLDNAHH VPGGGNVK IDSQKLNFRHAKARVDHGAEIITQSPGRSSVASPRRLSNVS SSGSINLL ESPQLATLAEDVTAALAKQGL</p>
预测分子量	78 kDa including tags	
氨基酸	1 to 471	
标签	GST tag N-Terminus	

技术指标

Our **Abpromise guarantee** covers the use of **ab114686** in the following tested applications.

The application notes include recommended starting dilutions; optimal dilutions/concentrations should be determined by the end user.

应用	Western blot SDS-PAGE ELISA
形式	Liquid

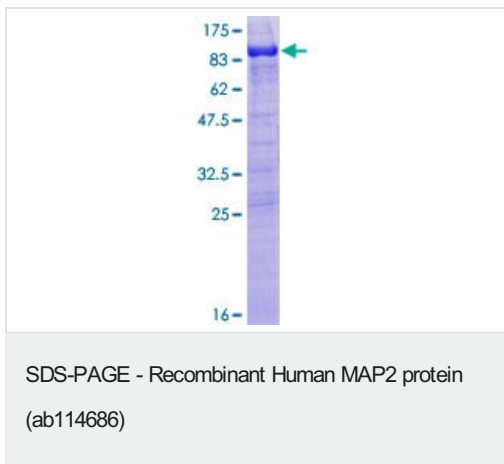
制备和贮存

稳定性和存储	Shipped on dry ice. Upon delivery aliquot and store at -80°C. Avoid freeze / thaw cycles. pH: 8.00 Constituents: 0.3% Glutathione, 0.79% Tris HCl
---------------	---

常规信息

功能	The exact function of MAP2 is unknown but MAPs may stabilize the microtubules against depolymerization. They also seem to have a stiffening effect on microtubules.
序列相似性	Contains 3 Tau/MAP repeats.
翻译后修饰	Phosphorylated at serine residues in K-X-G-S motifs by MAP/microtubule affinity-regulating kinase (MARK1 or MARK2), causing detachment from microtubules, and their disassembly (By similarity). Isoform 2 is probably phosphorylated by PKA at Ser-323, Ser-354 and Ser-386 and by FYN at Tyr-67.
细胞定位	Cytoplasm, cytoskeleton.

图片



ab114686 analysed on a 12.5% SDS-PAGE gel stained with Coomassie Blue.

Please note: All products are "FOR RESEARCH USE ONLY. NOT FOR USE IN DIAGNOSTIC PROCEDURES"

Our Abpromise to you: Quality guaranteed and expert technical support

- Replacement or refund for products not performing as stated on the datasheet
- Valid for 12 months from date of delivery
- Response to your inquiry within 24 hours

- We provide support in Chinese, English, French, German, Japanese and Spanish
- Extensive multi-media technical resources to help you
- We investigate all quality concerns to ensure our products perform to the highest standards

If the product does not perform as described on this datasheet, we will offer a refund or replacement. For full details of the Abpromise, please visit <https://www.abcam.cn/abpromise> or contact our technical team.

Terms and conditions

- Guarantee only valid for products bought direct from Abcam or one of our authorized distributors