

# Recombinant Human Macrophage inflammatory protein 5 ab105617

1 图像

描述	
产品名称	重组人Macrophage inflammatory蛋白5
纯度	> 95 % SDS-PAGE. ab105617 was purified using conventional chromatography techniques.
内毒素水平	< 1.000 Eu/μg
表达系统	Escherichia coli
Accession	<b><u>Q16663</u></b>
蛋白长度	Full length protein
无动物成分	No
性质	Recombinant
种属	Human
序列	MQFINDAETELMMSKLPLENPVVLNSFHFAADCCTSYISQSI PCSLMKSY FETSSECSKPGVIFLTKKGRQVCAKPSGPGVQDCMKKLPYS I
预测分子量	10 kDa
氨基酸	22 to 113
描述	重组人Macrophage inflammatory蛋白5

技术指标	
Our <b><u>Abpromise guarantee</u></b> covers the use of <b>ab105617</b> in the following tested applications.	
The application notes include recommended starting dilutions; optimal dilutions/concentrations should be determined by the end user.	
应用	SDS-PAGE Mass Spectrometry
质谱法	MALDI-TOF
形式	Liquid
制备和贮存	

## 稳定性和存储

Shipped at 4°C. Store at +4°C short term (1-2 weeks). Upon delivery aliquot. Store at -20°C or -80°C. Avoid freeze / thaw cycle.

pH: 7.40

Constituents: PBS, 10% Glycerol (glycerin, glycerine)

## 常规信息

### 功能

Chemotactic factor that attracts T-cells and monocytes, but not neutrophils, eosinophils, or B-cells. Acts mainly via CC chemokine receptor CCR1. Also binds to CCR3. CCL15(22-92), CCL15(25-92) and CCL15(29-92) are more potent chemoattractants than the small-inducible cytokine A15.

### 组织特异性

Most abundant in heart, skeletal muscle and adrenal gland. Lower levels in placenta, liver, pancreas and bone marrow. CCL15(22-92), CCL15(25-92) and CCL15(29-92) are found in high levels in synovial fluids from rheumatoid patients.

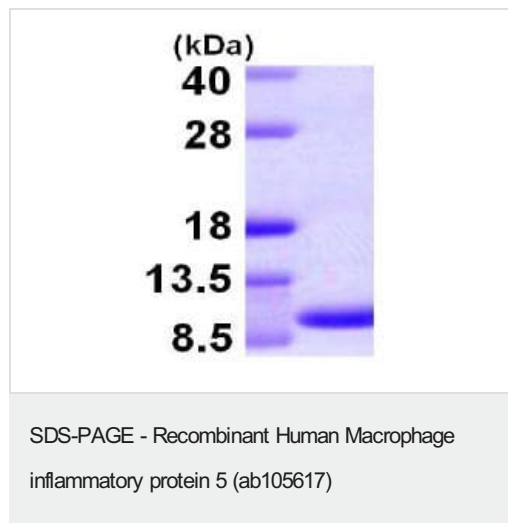
### 序列相似性

Belongs to the intercrine beta (chemokine CC) family.

### 细胞定位

Secreted.

## 图片



15% SDS-PAGE analysis of 3µg ab105617.

**Please note:** All products are "FOR RESEARCH USE ONLY. NOT FOR USE IN DIAGNOSTIC PROCEDURES"

## Our Abpromise to you: Quality guaranteed and expert technical support

- Replacement or refund for products not performing as stated on the datasheet
- Valid for 12 months from date of delivery
- Response to your inquiry within 24 hours
- We provide support in Chinese, English, French, German, Japanese and Spanish
- Extensive multi-media technical resources to help you
- We investigate all quality concerns to ensure our products perform to the highest standards

If the product does not perform as described on this datasheet, we will offer a refund or replacement. For full details of the Abpromise,

please visit <https://www.abcam.cn/abpromise> or contact our technical team.

## **Terms and conditions**

---

- Guarantee only valid for products bought direct from Abcam or one of our authorized distributors