

Recombinant human M-CSF protein (Active) ab62015

2 图像

描述	
产品名称	重组人M-CSF蛋白(Active)
生物活性	Method of Determination: NFS-60 cell proliferation Acceptance Criteria: ED ₅₀ ≤10 ng/mL(≥ 1.0 x 10 ⁵ units/mg) The specific activity of Human M-CSF is 1.0 x 10 ⁵ IU/μg, which is calibrated against recombinant human M-CSF WHO International Standard.
纯度	> 95 % SDS-PAGE.
内毒素水平	≤1.000 Eu/μg
表达系统	Escherichia coli
Accession	P09603-3
蛋白长度	Protein fragment
无动物成分	No
性质	Recombinant
种属	Human
序列	MEEVSEYCSH MIGSGHLQSL QRLIDSQMET SCQITFEFVD QEQLKDPVCY LKKAFLLVQD IMEDTMRFRD NTPNAIAIVQ LQELSLRLKS CFTKDYEEDH KACVRTFYET PLQLLEKVKV VFNETKNLLD KDOWNIFSKNC NNSFAECSSQ GHERQSEGSM EEVSEYCSHM IGSGHLQSLQ RLIDSQMETS CQITFEFVDQ EQLKDPVCYL KKAFLLVQDI MEDTMRFRDN TPNAIAIVQL QELSLRLKSC FTKDYEEDHK ACVRTFYETP LQLLEKVKV FNETKNLLDK DWNIFSKNCN NSFAECSSQG HERQSEGS
预测分子量	37 kDa
氨基酸	33 to 190

技术指标

Our **Abpromise guarantee** covers the use of **ab62015** in the following tested applications.

The application notes include recommended starting dilutions; optimal dilutions/concentrations should be determined by the end user.

应用	SDS-PAGE
	Functional Studies
形式	Lyophilized

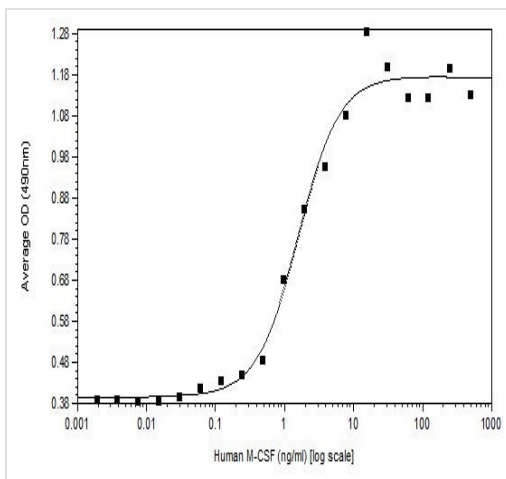
制备和贮存

稳定性和存储	Shipped at Room Temperature. Upon reconstitution add a carrier protein (0.1% BSA). Store at -80°C. Avoid freeze / thaw cycle.
	Constituents: 0.16% Sodium phosphate, 0.58% Sodium chloride
复溶	Lyophilized from a sterile (0.2 micron) filtered aqueous solution.
	This product is an active protein and may elicit a biological response in vivo, handle with caution.
复溶	Sterile water at 0.1 mg/mL Centrifuge vial before opening. Suspend the product by gently pipetting the above recommended solution down the sides of the vial. DO NOT VORTEX. Allow several minutes for complete reconstitution.

常规信息

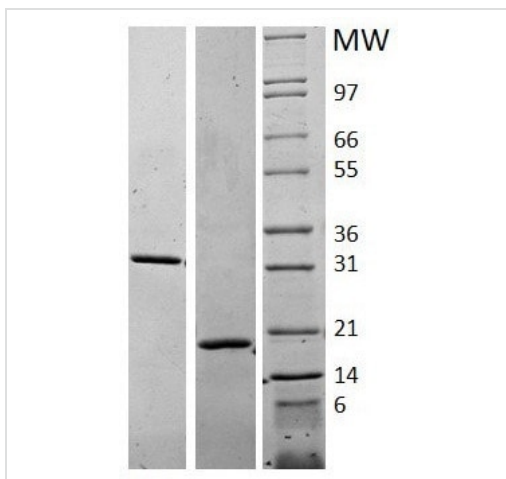
功能	Granulocyte/macrophage colony-stimulating factors are cytokines that act in hematopoiesis by controlling the production, differentiation, and function of 2 related white cell populations of the blood, the granulocytes and the monocytes-macrophages. CSF-1 induces cells of the monocyte/macrophage lineage. It plays a role in immunological defenses, bone metabolism, lipoproteins clearance, fertility and pregnancy.
翻译后修饰	Glycosylation and proteolytic cleavage yield different soluble forms. A high molecular weight soluble form is a proteoglycan containing chondroitin sulfate. Isoform 1 is N- and O-glycosylated. Isoform 3 is N-glycosylated.
细胞定位	Cell membrane and Secreted > extracellular space.

图片



ab62015 Induced Proliferation of NFS-60 Cells.

Functional Studies - Recombinant human M-CSF protein (ab62015)



1 ug of ab62015 on 4-20% Tris-Glycerine SDS-PAGE, stained with Coomassie Blue.

Lane 1: Non reducing

Lane 2: Reducing

SDS-PAGE - Recombinant human M-CSF protein (ab62015)

Please note: All products are "FOR RESEARCH USE ONLY. NOT FOR USE IN DIAGNOSTIC PROCEDURES"

Our Abpromise to you: Quality guaranteed and expert technical support

- Replacement or refund for products not performing as stated on the datasheet
- Valid for 12 months from date of delivery
- Response to your inquiry within 24 hours
- We provide support in Chinese, English, French, German, Japanese and Spanish
- Extensive multi-media technical resources to help you
- We investigate all quality concerns to ensure our products perform to the highest standards

If the product does not perform as described on this datasheet, we will offer a refund or replacement. For full details of the Abpromise, please visit <https://www.abcam.cn/abpromise> or contact our technical team.

Terms and conditions

- Guarantee only valid for products bought direct from Abcam or one of our authorized distributors