

Recombinant Human Lumican protein ab114635

1 图像

描述	
产品名称	重组人Lumican蛋白
表达系统	Wheat germ
Accession	<u>P51884</u>
蛋白长度	Full length protein
无动物成分	No
性质	Recombinant
种属	Human
序列	MSLSAFTLFLALIGGTSGQYYDYDFPLSIYGQSSPNCAPECN CPESYPSA MYCDELKLKSVPMPVPGIKYLYLRNNQIDHIDEKAFENVTDL QWLILDHN LLENSKIKGRVFSKLKQLKKLHINHHNLTESVGPLPKSLEDL QLTHNKIT KLGSFEGLVNLTFIHLQHNRLKEDAVSAAFKGLKSLEYLDLS FNQIARLP SGLPVSLTLYLDNNKISNIPDEYFKRFNALQYLRLSHNELA DSGIPGNS FNVSSLVELDLSYNKLKNIPTVNENLENYYLEVNQLEKFDIK SFCKILGP LSYSKIKHLRLDGNRISETSLPPDMYECLRVANEVTLN
预测分子量	63 kDa including tags
氨基酸	1 to 338

技术指标	
Our <b>Abpromise guarantee</b> covers the use of <b>ab114635</b> in the following tested applications.	
The application notes include recommended starting dilutions; optimal dilutions/concentrations should be determined by the end user.	
应用	ELISA SDS-PAGE Western blot
形式	Liquid

## 制备和贮存

### 稳定性和存储

Shipped on dry ice. Upon delivery aliquot and store at -80°C. Avoid freeze / thaw cycles.

pH: 8.00

Constituents: 0.3% Glutathione, 0.79% Tris HCl

## 常规信息

### 组织特异性

Cornea and other tissues.

### 序列相似性

Belongs to the small leucine-rich proteoglycan (SLRP) family. SLRP class II subfamily.

Contains 11 LRR (leucine-rich) repeats.

Contains 1 LRRNT domain.

### 发展阶段

Present in the extracellular matrix of human articular cartilage at all ages, although its abundance is far greater in the adult. In the adult cartilage lumican exists predominantly in a glycoprotein form lacking keratan sulfate, whereas the juvenile form of the molecule is a proteoglycan.

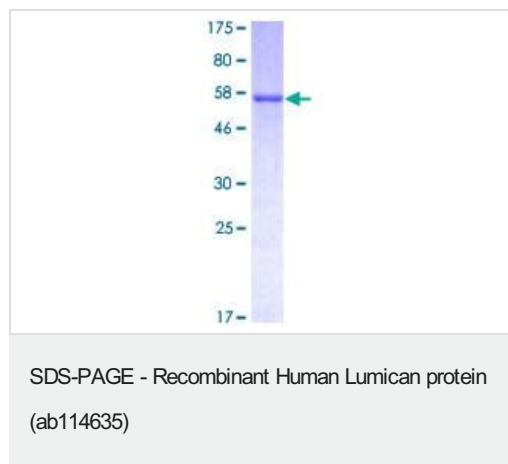
### 翻译后修饰

Sulfated on tyrosine residue(s).

### 细胞定位

Secreted > extracellular space > extracellular matrix.

## 图片



ab114635 analysed by 12.5% SDS-PAGE and stained with Coomassie Blue.

**Please note:** All products are "FOR RESEARCH USE ONLY. NOT FOR USE IN DIAGNOSTIC PROCEDURES"

## Our Abpromise to you: Quality guaranteed and expert technical support

- Replacement or refund for products not performing as stated on the datasheet
- Valid for 12 months from date of delivery
- Response to your inquiry within 24 hours
- We provide support in Chinese, English, French, German, Japanese and Spanish
- Extensive multi-media technical resources to help you
- We investigate all quality concerns to ensure our products perform to the highest standards

If the product does not perform as described on this datasheet, we will offer a refund or replacement. For full details of the Abpromise,

please visit <https://www.abcam.cn/abpromise> or contact our technical team.

#### **Terms and conditions**

---

- Guarantee only valid for products bought direct from Abcam or one of our authorized distributors