

Recombinant Human LCAT protein ab104359

1 图像

描述	
产品名称	重组人LCAT蛋白
纯度	> 95 % SDS-PAGE. ab104359 is filtered (0.4 µm). Purity as determined by densitometric image analysis: >95%
表达系统	HEK 293 cells
Accession	<u>P04180</u>
蛋白长度	Full length protein
无动物成分	No
性质	Recombinant
种属	Human
序列	<div>HVDYKDDDDKPA^gFWLLNVLFPPHTTPKAELSNHTRPVILV PGCLGNQLE AKLDKPDVVNWMCYRKTE^dFFTIWLDLNMFLPLGVDCWIDNT RVVYNR SS GLVSNAPGVQIRVPGFGK^tYSVEYLDSSKLAGYLHTLVQNLV NNGY VRDE TVRAAPYDWRLEPGQ^qEEYYRKL^aGLVEEMHAAYGKPVFLIG HS LGCLHL LYFLLRQPQAWKDRFIDGFISL^gAPWGGSIKPMLVLASGDNQ GIPIMSSI KLKEEQRITTTSPWMF^pSRMAWPEDHVFISTPSFN^yTGRD FQ^rFFADLHF EEGWYMWLQSRDLLAGL^pAPGVEVYCLYGVGLPT^rPTY IYDHGFPY^tDPV GVLYEDGDDTVATRSTELCGLWQGRQPQ^vHLLPLH GIQHLNMVFSNLTL EHINAILLGAYRQGP^pASPTASPEPP^pPE</div>
预测分子量	49 kDa including tags
氨基酸	25 to 440
标签	DDDDK tag N-Terminus

技术指标

Our **Abpromise guarantee** covers the use of **ab104359** in the following tested applications.

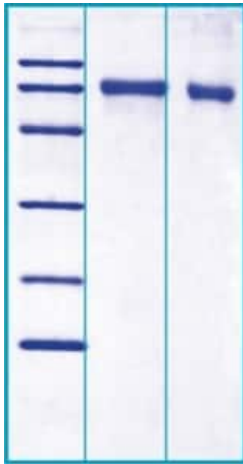
The application notes include recommended starting dilutions; optimal dilutions/concentrations should be determined by the end user.

应用	SDS-PAGE
形式	Lyophilized
补充说明	Please filter the product by an appropriate sterile filter before using it in the cell culture. Aliquot reconstituted protein to avoid repeated freezing/thawing cycles and store at -80°C for long term storage. Reconstituted protein can be stored at 4°C for a limited period of time; it does not show any change after one week at 4°C.
制备和贮存	
稳定性和存储	Store at -20°C. Avoid freeze / thaw cycle. Please see notes section. pH: 7.50 Constituents: 0.242% Tris, 0.29% Sodium chloride
复溶	Add deionized water to prepare a working stock solution of approximately 0.5 mg/ml and let the lyophilized pellet dissolve completely. Product is not sterile!
常规信息	
功能	Central enzyme in the extracellular metabolism of plasma lipoproteins. Synthesized mainly in the liver and secreted into plasma where it converts cholesterol and phosphatidylcholines (lecithins) to cholesteryl esters and lysophosphatidylcholines on the surface of high and low density lipoproteins (HDLs and LDLs). The cholesterol ester is then transported back to the liver. Has a preference for plasma 16:0-18:2 or 18:0-18:2 phosphatidylcholines. Also produced in the brain by primary astrocytes, and esterifies free cholesterol on nascent APOE-containing lipoproteins secreted from glia and influences cerebral spinal fluid (CSF) APOE- and APOA1 levels. Together with APOE and the cholesterol transporter ABCA1, plays a key role in the maturation of glial-derived, nascent lipoproteins. Required for remodeling high-density lipoprotein particles into their spherical forms.
组织特异性	Expressed mainly in brain, liver and testes. Secreted into plasma and cerebral spinal fluid. In liver, expressed in HEPG2 hepatocytes.
疾病相关	Defects in LCAT are the cause of lecithin-cholesterol acyltransferase deficiency (LCATD) [MIM:245900]; also called Norum disease. LCATD is a disorder of lipoprotein metabolism characterized by inadequate esterification of plasmatic cholesterol. Two clinical forms are recognized: familial LCAT deficiency and fish-eye disease. Familial LCAT deficiency is associated with a complete absence of alpha and beta LCAT activities and results in esterification anomalies involving both HDL (alpha-LCAT activity) and LDL (beta-LCAT activity). It causes a typical triad of diffuse corneal opacities, target cell hemolytic anemia, and proteinuria with renal failure. Defects in LCAT are a cause of fish-eye disease (FED) [MIM:136120]; also known as dyslipoproteinemic corneal dystrophy or alpha-LCAT deficiency. FED is due to a partial LCAT deficiency that affects only alpha-LCAT activity. It is characterized by low plasma HDL and corneal opacities due to accumulation of cholesterol deposits in the cornea ('fish-eye').
序列相似性	Belongs to the AB hydrolase superfamily. Lipase family.
翻译后修饰	O- and N-glycosylated. O-glycosylation on Thr-431 and Ser-433 consists of sialylated galactose beta 1-->3N-acetylgalactosamine structures. N-glycosylated sites contain sialylated triantennary and/or biantennary complex structures.

细胞定位

Secreted. Secreted into blood plasma. Produced in astrocytes and secreted into cerebral spinal fluid.

图片



14% SDS-PAGE showing ab104359 at approximately 48.5kDa:

Lane 1: M.W. marker – 14, 21, 31, 45, 66, 97 kDa

Lane 2: reduced and boiled sample, 5µg/lane.

Lane 3: non-reduced and non-boiled sample, 5µg/lane.

SDS-PAGE - Recombinant Human LCAT protein
(ab104359)

Please note: All products are "FOR RESEARCH USE ONLY. NOT FOR USE IN DIAGNOSTIC PROCEDURES"

Our Abpromise to you: Quality guaranteed and expert technical support

- Replacement or refund for products not performing as stated on the datasheet
- Valid for 12 months from date of delivery
- Response to your inquiry within 24 hours
- We provide support in Chinese, English, French, German, Japanese and Spanish
- Extensive multi-media technical resources to help you
- We investigate all quality concerns to ensure our products perform to the highest standards

If the product does not perform as described on this datasheet, we will offer a refund or replacement. For full details of the Abpromise, please visit <https://www.abcam.cn/abpromise> or contact our technical team.

Terms and conditions

- Guarantee only valid for products bought direct from Abcam or one of our authorized distributors