

# Recombinant Human LAT protein ab113124

## 1 图像

### 描述

---

产品名称	重组人LAT蛋白
纯度	> 95 % SDS-PAGE. ab113124 was purified using conventional chromatography.
表达系统	Escherichia coli
Accession	<u><a href="#">O43561-2</a></u>
蛋白长度	Protein fragment
无动物成分	No
性质	Recombinant
种属	Human
序列	<b>MGSSHHHHHSSGLVPRGSHMHCHRLPGSYDSTSSDSLYP RGIQFKRPHT VAPWPPAYPPVTSYPPLSQPDLLPIPRSPQLGGSHRTPSSR RSDGANS VASYENEEPACEDADEDEDDYHNPGYLVVLPDSTPATSTAAP SAPALSTP GIRDSAFSMESIDDDYVNVPESGESAEASLDGSREYVNVSQEL HPGAAKTE PAALSSQEAEVEEEGAPDYENLQELN</b>
预测分子量	24 kDa including tags
氨基酸	28 to 233
标签	His tag N-Terminus

### 技术指标

---

Our **Abpromise guarantee** covers the use of **ab113124** in the following tested applications.

The application notes include recommended starting dilutions; optimal dilutions/concentrations should be determined by the end user.

应用	SDS-PAGE Mass Spectrometry
质谱法	MALDI-TOF
形式	Liquid

### 制备和贮存

## 稳定性和存储

Shipped at 4°C. Store at +4°C short term (1-2 weeks). Upon delivery aliquot. Store at -20°C or -80°C. Avoid freeze / thaw cycle.

pH: 8.00

Constituents: 0.02% DTT, 0.32% Tris HCl

## 常规信息

### 功能

Required for TCR (T-cell antigen receptor)- and pre-TCR-mediated signaling, both in mature T-cells and during their development. Involved in FCGR3 (low affinity immunoglobulin gamma Fc region receptor III)-mediated signaling in natural killer cells and FCER1 (high affinity immunoglobulin epsilon receptor)-mediated signaling in mast cells. Couples activation of these receptors and their associated kinases with distal intracellular events such as mobilization of intracellular calcium stores, PKC activation, MAPK activation or cytoskeletal reorganization through the recruitment of PLCG1, GRB2, GRAP2, and other signaling molecules.

### 组织特异性

Expressed in thymus, T-cells, NK cells, mast cells and, at lower levels, in spleen. Present in T-cells but not B-cells (at protein level).

### 翻译后修饰

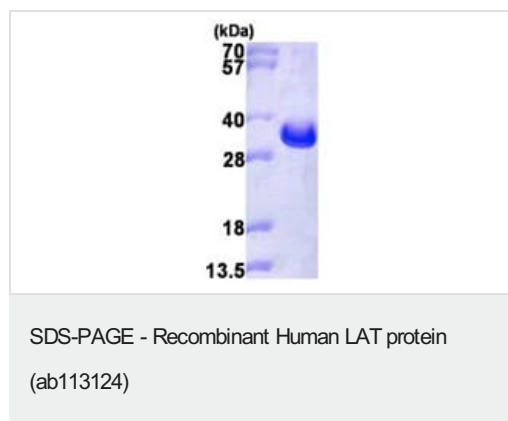
Phosphorylated on tyrosines by ZAP-70 upon TCR activation, or by SYK upon other immunoreceptor activation; which leads to the recruitment of multiple signaling molecules. Is one of the most prominently tyrosine-phosphorylated proteins detected following TCR engagement. May be dephosphorylated by PTPRJ.

Palmitoylation of Cys-26 and Cys-29 is required for raft targeting and efficient phosphorylation.

### 细胞定位

Cell membrane. Present in lipid rafts.

## 图片



15% SDS-PAGE analysis of ab113124 (3 µg).

Molecular weight on SDS-PAGE will appear higher.

**Please note:** All products are "FOR RESEARCH USE ONLY. NOT FOR USE IN DIAGNOSTIC PROCEDURES"

## Our Abpromise to you: Quality guaranteed and expert technical support

- Replacement or refund for products not performing as stated on the datasheet
- Valid for 12 months from date of delivery
- Response to your inquiry within 24 hours

- We provide support in Chinese, English, French, German, Japanese and Spanish
- Extensive multi-media technical resources to help you
- We investigate all quality concerns to ensure our products perform to the highest standards

If the product does not perform as described on this datasheet, we will offer a refund or replacement. For full details of the Abpromise, please visit <https://www.abcam.cn/abpromise> or contact our technical team.

#### **Terms and conditions**

---

- Guarantee only valid for products bought direct from Abcam or one of our authorized distributors