

Recombinant Human LAD1 protein ab116948

1 图像

描述		
产品名称	重组人LAD1蛋白	
表达系统	Wheat germ	
Accession	<b><u>O00515</u></b>	
蛋白长度	Protein fragment	
无动物成分	No	
性质	Recombinant	
种属	Human	
序列	SESVKSRGLPCTELFVAPVGVASKRHLFEKELAGQSRAEPAS SRKENLRL SGVVT SRLNLWISRTQESGDQDPQEAQKASSATERTQWGQKS DSSLDAEV	
预测分子量	37 kDa including tags	
氨基酸	418 to 517	

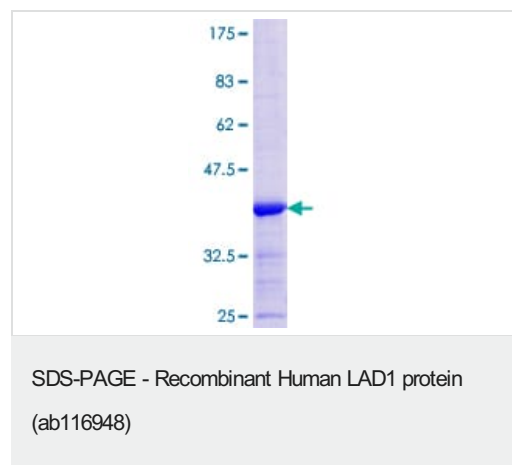
技术指标	
Our <b><u>Abpromise guarantee</u></b> covers the use of <b>ab116948</b> in the following tested applications.	
The application notes include recommended starting dilutions; optimal dilutions/concentrations should be determined by the end user.	
应用	ELISA SDS-PAGE Western blot
形式	Liquid

制备和贮存	
稳定性和存储	Shipped on dry ice. Upon delivery aliquot and store at -80°C. Avoid freeze / thaw cycles. pH: 8.00 Constituents: 0.3% Glutathione, 0.79% Tris HCl

常规信息	
------	--

功能	Anchoring filament protein which is a component of the basement membrane zone.
细胞定位	Secreted > extracellular space > extracellular matrix > basement membrane.

## 图片



12.5% SDS-PAGE showing ab116948 at approximately 36.63kDa stained with Coomassie Blue.

**Please note:** All products are "FOR RESEARCH USE ONLY. NOT FOR USE IN DIAGNOSTIC PROCEDURES"

## Our Abpromise to you: Quality guaranteed and expert technical support

- Replacement or refund for products not performing as stated on the datasheet
- Valid for 12 months from date of delivery
- Response to your inquiry within 24 hours
- We provide support in Chinese, English, French, German, Japanese and Spanish
- Extensive multi-media technical resources to help you
- We investigate all quality concerns to ensure our products perform to the highest standards

If the product does not perform as described on this datasheet, we will offer a refund or replacement. For full details of the Abpromise, please visit <https://www.abcam.cn/abpromise> or contact our technical team.

## Terms and conditions

- Guarantee only valid for products bought direct from Abcam or one of our authorized distributors