

Recombinant Human KPNB1 protein ab116172

1 图像

描述

产品名称	重组人KPNB1蛋白
纯度	> 85 % SDS-PAGE. ab116172 is purified using conventional chromatography techniques.
表达系统	Escherichia coli
Accession	<u>Q14974</u>
蛋白长度	Full length protein
无动物成分	No
性质	Recombinant
种属	Human

序列

```
MGSSHHHHHSSGLVPRGSHMGSMELITIL
EKTVSPDRLE LEAAQKFLER AAVENLPTFL
VELSRVLANP GNSQVARVAA GLQIKNSLTS
KDPDIKAQYQ QRWLAIIDANA RREVKNYVLQ
TLGTETYRPS SASQCVAGIA CAEIPVNQWP
ELIPQLVANV TNPNSTEHMK ESTLEAIGYI
CQDIDPEQLQ DKSNEILTAI IQGMRKEEPS
NNVKLAATNA LLNSLEFTKA NFDKESERHF
IMQVVCEATQ CPDTRVRVAA LQNLVKIMSL
YYQYMETYMG PALFAITIEA MKSDIDEVAL
QGIEFWSNVC DEEMDLAIEA SEAAEQGRPP
EHTSKFYAKG ALQYLVPILT QTLTKQDEND
DDDDWNPKCA AGVCLMLLAT CCEDDIVPHV
LPFIKEHIKN PDWRYRDAAV MAFGCILEGP
EPSQLKPLVI QAMPTLIELM KDPSVVVRDT
AAWTVGRICE LLPEAAINDV YLAPLLQCLI
EGLSAEPRVA SNVCWAFSSL AEAAYEAADV
ADDQEEPATY CLSSSFELIV QKLETTDRP
DGHQNNLRSS AYESLMEIVK NSAKDCYPAV
QKTTLVIMER LQQVLQMESH IQSTSDRIQF
NDLQSLLCAT LQNVLRKVQH QDALQISDVV
MASLLRMFQS TAGSGGVQED ALMAVSTLVE
VLGGEFKLYM EAFKPFLGIG LKNYAHEYQVC
LAAVGLVGD LCRALQSNIIIP FCDEVMQLLL
ENLGNENVHR SVKPKILSVF GDIALAIGGE
```

FKKYLEVVLN TLQQASQAQV DKSDYDMVDY
LNELRESCLE AYTGIVQGLK GDQENVHPDV
MLVQPRVEFI LSFIDHIAGD EDHTDGVVAC
AAGLIGDLCT AFGKDVLLKV EARPMIHELL
TEGRRSKTNK AKTLATWATK ELRKLKNQA

预测分子量 100 kDa including tags
氨基酸 1 to 876
标签 His tag N-Terminus

技术指标

Our **Abpromise guarantee** covers the use of **ab116172** in the following tested applications.

The application notes include recommended starting dilutions; optimal dilutions/concentrations should be determined by the end user.

应用 SDS-PAGE
形式 Liquid
补充说明 Previously labelled as NTF97/Importin beta.

制备和贮存

稳定性和存储 Shipped at 4°C. Store at +4°C short term (1-2 weeks). Upon delivery aliquot. Store at -20°C or -80°C. Avoid freeze / thaw cycle.
pH: 8.00
Constituents: 0.02% DTT, 0.32% Tris HCl, 30% Glycerol (glycerin, glycerine), 0.58% Sodium chloride

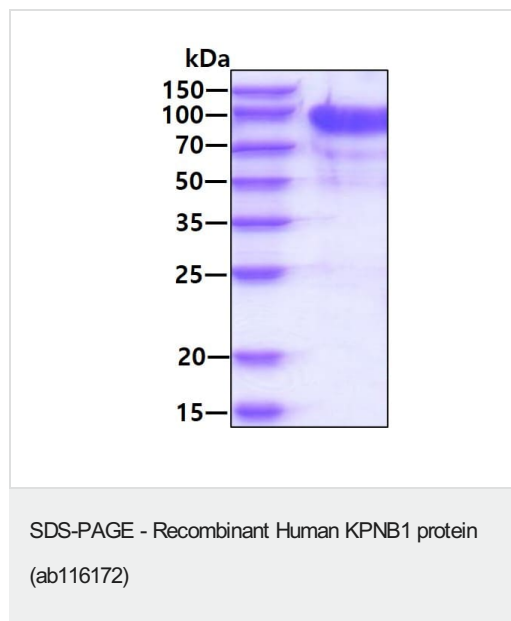
常规信息

功能 Functions in nuclear protein import, either in association with an adapter protein, like an importin-alpha subunit, which binds to nuclear localization signals (NLS) in cargo substrates, or by acting as autonomous nuclear transport receptor. Acting autonomously, serves itself as NLS receptor. Docking of the importin/substrate complex to the nuclear pore complex (NPC) is mediated by KPNB1 through binding to nucleoporin FxFG repeats and the complex is subsequently translocated through the pore by an energy requiring, Ran-dependent mechanism. At the nucleoplasmic side of the NPC, Ran binds to importin-beta and the three components separate and importin-alpha and -beta are re-exported from the nucleus to the cytoplasm where GTP hydrolysis releases Ran from importin. The directionality of nuclear import is thought to be conferred by an asymmetric distribution of the GTP- and GDP-bound forms of Ran between the cytoplasm and nucleus. Mediates autonomously the nuclear import of ribosomal proteins RPL23A, RPS7 and RPL5. Binds to a beta-like import receptor binding (BIB) domain of RPL23A. In association with IPO7 mediates the nuclear import of H1 histone. In vitro, mediates nuclear import of H2A, H2B, H3 and H4 histones. In case of HIV-1 infection, binds and mediates the nuclear import of HIV-1 Rev. Imports PRKCI into the nucleus.

序列相似性 Belongs to the importin beta family.
Contains 8 HEAT repeats.
Contains 1 importin N-terminal domain.

细胞定位 Cytoplasm. Nucleus envelope.

图片



15% SDS-PAGE showing ab116172 at approximately 99.6kDa (3 μ g).

Please note: All products are "FOR RESEARCH USE ONLY. NOT FOR USE IN DIAGNOSTIC PROCEDURES"

Our Abpromise to you: Quality guaranteed and expert technical support

- Replacement or refund for products not performing as stated on the datasheet
- Valid for 12 months from date of delivery
- Response to your inquiry within 24 hours
- We provide support in Chinese, English, French, German, Japanese and Spanish
- Extensive multi-media technical resources to help you
- We investigate all quality concerns to ensure our products perform to the highest standards

If the product does not perform as described on this datasheet, we will offer a refund or replacement. For full details of the Abpromise, please visit <https://www.abcam.cn/abpromise> or contact our technical team.

Terms and conditions

- Guarantee only valid for products bought direct from Abcam or one of our authorized distributors