

Recombinant Human KPNA2 protein ab123205

1 图像

描述		
产品名称	重组人KPNA2蛋白	
纯度	> 90 % SDS-PAGE. ab123205 is purified by using conventional chromatography.	
表达系统	Escherichia coli	
Accession	<u>P52292</u>	
蛋白长度	Full length protein	
无动物成分	No	
性质	Recombinant	
种属	Human	
序列	MGSSHHHHHH SSGLVPRGSH MGSHMSTNEN ANTPAARLHR FKNKGKDSTE MRRRRIEVNV ELRKAKKDDQ MLKRRNVSSF PDDATSPLQE NRNNQGTVNW SVDDIVKGIN SSNVENQLQA TQAARKLLSR EKQPPIDNII RAGLIPKFVS FLGRTDCSPI QFESAWALTN IASGTSEQTK VVVDGGAIPA FISLLASPHA HISEQAVWAL GNIAGDGSVF RDLVIKYGAV DPLLALLAVP DMSSLACGYL RNLTWTLSNL CRKNKPAPPI DAVEQILPTL VRLHHDDPE VLADTCWAIS YLTGDPNERI GMVVKTGVPV QLVKLLGASE LPIVTPALRA IGNIVTGTDE QTQVVIDAGA LAVFPSLLTN PKTNIQKEAT WTMSNITAGR QDQIQQVVNH GLVPFLVSVL SKADFKTQKE AVWAVTNYTS GGTVEQIVYL VHCГИIEPLM NLLTAKDTKI ILVILDAISN IFQAAENLGE TEKLSIMIEE CGGLDKIEAL QNHENESVYK ASLSLIEKYF SVEEEEDQNV VPETTSEGYT FQVQDGAPGT FNF	
预测分子量	61 kDa including tags	
氨基酸	1 to 529	
标签	His tag N-Terminus	
技术指标		

---

Our **Abpromise guarantee** covers the use of **ab123205** in the following tested applications.

The application notes include recommended starting dilutions; optimal dilutions/concentrations should be determined by the end user.

**应用** SDS-PAGE

**形式** Liquid

---

## 制备和贮存

**稳定性和存储** Shipped at 4°C. Store at +4°C short term (1-2 weeks). Upon delivery aliquot. Store at -20°C or -80°C. Avoid freeze / thaw cycle.

pH: 8.00

Constituents: 0.02% DTT, 0.32% Tris HCl, 20% Glycerol (glycerin, glycerine)

---

## 常规信息

**功能** Functions in nuclear protein import as an adapter protein for nuclear receptor KPNB1. Binds specifically and directly to substrates containing either a simple or bipartite NLS motif. Docking of the importin/substrate complex to the nuclear pore complex (NPC) is mediated by KPNB1 through binding to nucleoporin FxFG repeats and the complex is subsequently translocated through the pore by an energy requiring, Ran-dependent mechanism. At the nucleoplasmic side of the NPC, Ran binds to importin-beta and the three components separate and importin-alpha and -beta are re-exported from the nucleus to the cytoplasm where GTP hydrolysis releases Ran from importin. The directionality of nuclear import is thought to be conferred by an asymmetric distribution of the GTP- and GDP-bound forms of Ran between the cytoplasm and nucleus.

**组织特异性** Expressed ubiquitously.

**序列相似性** Belongs to the importin alpha family.

Contains 10 ARM repeats.

Contains 1 IBB domain.

**结构域** Consists of an N-terminal hydrophilic region, a hydrophobic central region composed of 10 repeats, and a short hydrophilic C-terminus. The N-terminal hydrophilic region contains the importin beta binding domain (IBB domain), which is sufficient for binding importin beta and essential for nuclear protein import.

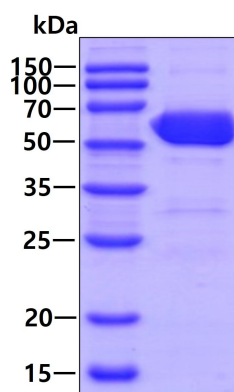
The IBB domain is thought to act as an intrasteric autoregulatory sequence by interacting with the internal autoinhibitory NLS. Binding of KPNB1 probably overlaps the internal NLS and contributes to a high affinity for cytoplasmic NLS-containing cargo substrates. After dissociation of the importin/substrate complex in the nucleus the internal autoinhibitory NLS contributes to a low affinity for nuclear NLS-containing proteins.

The major and minor NLS binding sites are mainly involved in recognition of simple or bipartite NLS motifs. Structurally located within in a helical surface groove they contain several conserved Trp and Asn residues of the corresponding third helices (H3) of ARM repeats which mainly contribute to binding.

**细胞定位** Cytoplasm. Nucleus.

---

## 图片



SDS-PAGE - Recombinant Human KPNA2 protein  
(ab123205)

3ug by SDS-PAGE under reducing condition and visualized by coomassie blue stain.

**Please note:** All products are "FOR RESEARCH USE ONLY. NOT FOR USE IN DIAGNOSTIC PROCEDURES"

#### Our Abpromise to you: Quality guaranteed and expert technical support

---

- Replacement or refund for products not performing as stated on the datasheet
- Valid for 12 months from date of delivery
- Response to your inquiry within 24 hours
- We provide support in Chinese, English, French, German, Japanese and Spanish
- Extensive multi-media technical resources to help you
- We investigate all quality concerns to ensure our products perform to the highest standards

If the product does not perform as described on this datasheet, we will offer a refund or replacement. For full details of the Abpromise, please visit <https://www.abcam.cn/abpromise> or contact our technical team.

#### Terms and conditions

---

- Guarantee only valid for products bought direct from Abcam or one of our authorized distributors