

Recombinant Human Kir4.1/KCNJ10 protein ab114456

1 图像

描述	
产品名称	重组人Kir4.1/KCNJ10蛋白
表达系统	Wheat germ
Accession	P78508
蛋白长度	Protein fragment
无动物成分	No
性质	Recombinant
种属	Human
序列	DFELVLILSGTVESTSATCQVRTSYLPEEILWGYEFTPAISL SASGKYIA DFSLFDQVVKVASPSGLRDSTVRYGDPEKLEESLREQAEK EGSALSVR ISNV
预测分子量	37 kDa including tags
氨基酸	276 to 379

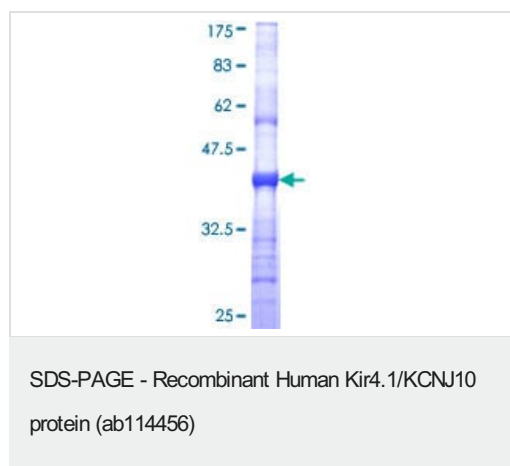
技术指标	
Our Abpromise guarantee covers the use of ab114456 in the following tested applications.	
The application notes include recommended starting dilutions; optimal dilutions/concentrations should be determined by the end user.	
应用	Western blot SDS-PAGE ELISA
形式	Liquid
补充说明	This product was previously labelled as Kir4.1.

制备和贮存	
稳定性和存储	Shipped on dry ice. Upon delivery aliquot and store at -80°C. Avoid freeze / thaw cycles. pH: 8.00 Constituents: 0.3% Glutathione, 0.79% Tris HCl

常规信息

功能	May be responsible for potassium buffering action of glial cells in the brain. Inward rectifier potassium channels are characterized by a greater tendency to allow potassium to flow into the cell rather than out of it. Their voltage dependence is regulated by the concentration of extracellular potassium; as external potassium is raised, the voltage range of the channel opening shifts to more positive voltages. The inward rectification is mainly due to the blockage of outward current by internal magnesium. Can be blocked by extracellular barium and cesium (By similarity). In the kidney, together with KCNJ16, mediates basolateral K(+) recycling in distal tubules; this process is critical for Na(+) reabsorption at the tubules.
组织特异性	Expressed in kidney (at protein level).
疾病相关	Seizures, sensorineural deafness, ataxia, mental retardation, and electrolyte imbalance
序列相似性	Belongs to the inward rectifier-type potassium channel (TC 1.A.2.1) family. KCNJ10 subfamily.
细胞定位	Membrane. Basolateral cell membrane. In kidney distal convoluted tubules, located in the basolateral membrane where it colocalizes with KCNJ16.

图片



ab114456 analysed on a 12.5% SDS-PAGE stained with Coomassie Blue.

Please note: All products are "FOR RESEARCH USE ONLY. NOT FOR USE IN DIAGNOSTIC PROCEDURES"

Our Abpromise to you: Quality guaranteed and expert technical support

- Replacement or refund for products not performing as stated on the datasheet
- Valid for 12 months from date of delivery
- Response to your inquiry within 24 hours
- We provide support in Chinese, English, French, German, Japanese and Spanish
- Extensive multi-media technical resources to help you
- We investigate all quality concerns to ensure our products perform to the highest standards

If the product does not perform as described on this datasheet, we will offer a refund or replacement. For full details of the Abpromise, please visit <https://www.abcam.cn/abpromise> or contact our technical team.

Terms and conditions

- Guarantee only valid for products bought direct from Abcam or one of our authorized distributors