

Recombinant human KDS protein ab125551

2 图像

描述

产品名称	重组人KDS蛋白
生物活性	The specific activity of ab125551 was determined to be 260 nmol/min/mg.
纯度	> 90 % SDS-PAGE. Assessed by densitometry.
表达系统	Baculovirus infected Sf9 cells
Accession	<u>Q9H2K8</u>
蛋白长度	Protein fragment
无动物成分	No
性质	Recombinant
种属	Human
预测分子量	89 kDa
氨基酸	1 to 463

技术指标

Our **Abpromise guarantee** covers the use of **ab125551** in the following tested applications.

The application notes include recommended starting dilutions; optimal dilutions/concentrations should be determined by the end user.

应用	Western blot Functional Studies SDS-PAGE
形式	Liquid
补充说明	<u>ab204875</u> (PKC epsilon peptide) can be utilized as a substrate for assessing kinase activity This product was previously labelled as TAOK3

制备和贮存

稳定性和存储	Shipped on dry ice. Upon delivery aliquot and store at -80°C. Avoid freeze / thaw cycles. pH: 7.50 Constituents: 0.31% Glutathione, 0.002% PMSF, 0.004% DTT, 0.79% Tris HCl, 0.003% EDTA,
--------	---

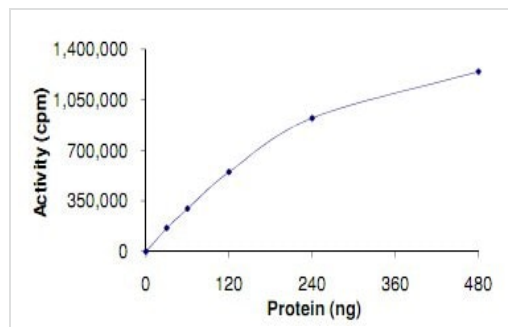
25% Glycerol (glycerin, glycerine), 0.88% Sodium chloride

This product is an active protein and may elicit a biological response in vivo, handle with caution.

常规信息

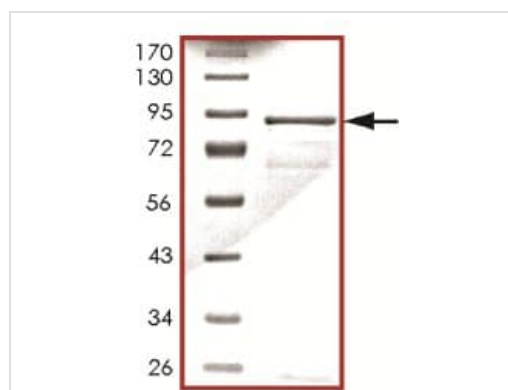
功能	Inhibits the basal activity of Jun kinase. Negatively regulated by epidermal growth factor (EGF). When overexpressed, may activate ERK1/ERK2 and JNK/SAPK.
组织特异性	Ubiquitously expressed at a low level, and highly expressed in peripheral blood leukocytes (PBLs), thymus, spleen, kidney, skeletal muscle, heart and liver.
序列相似性	Belongs to the protein kinase superfamily. STE Ser/Thr protein kinase family. STE20 subfamily. Contains 1 protein kinase domain.
翻译后修饰	Autophosphorylated. Phosphorylated upon DNA damage, probably by ATM or ATR.
细胞定位	Cytoplasm. Cell membrane. Also localized to the peripheral cell membrane.

图片



The specific activity of ab125551 was determined to be 260 nmol/min/mg.

Functional Studies - Recombinant human KDS protein (ab125551)



SDS-PAGE analysis of ab125551.

SDS-PAGE - Recombinant human KDS protein (ab125551)

Please note: All products are "FOR RESEARCH USE ONLY. NOT FOR USE IN DIAGNOSTIC PROCEDURES"

Our Abpromise to you: Quality guaranteed and expert technical support

- Replacement or refund for products not performing as stated on the datasheet
- Valid for 12 months from date of delivery
- Response to your inquiry within 24 hours

- We provide support in Chinese, English, French, German, Japanese and Spanish
- Extensive multi-media technical resources to help you
- We investigate all quality concerns to ensure our products perform to the highest standards

If the product does not perform as described on this datasheet, we will offer a refund or replacement. For full details of the Abpromise, please visit <https://www.abcam.cn/abpromise> or contact our technical team.

Terms and conditions

- Guarantee only valid for products bought direct from Abcam or one of our authorized distributors