

### Recombinant Human JNK1 (mutated K55M) protein ab95248

1 References   [1 图像](#)

#### 描述

产品名称	重组人JNK1 (mutated K55M)蛋白
纯度	> 85 % SDS-PAGE.
表达系统	Escherichia coli
蛋白长度	Protein fragment
无动物成分	No
性质	Recombinant
种属	Human
氨基酸	2 to 383

#### 技术指标

Our **Abpromise guarantee** covers the use of **ab95248** in the following tested applications.

The application notes include recommended starting dilutions; optimal dilutions/concentrations should be determined by the end user.

应用	Functional Studies
	SDS-PAGE
形式	Liquid

#### 制备和贮存

稳定性和存储	Shipped on Dry Ice. Upon delivery aliquot. Store at -80°C. Avoid freeze / thaw cycle. pH: 8.00 Constituents: 0.0462% (R*,R*)-1,4-Dimercaptobutan-2,3-diol, 0.395% Tris HCl, 0.05% Tween, 20% Glycerol (glycerin, glycerine), 0.58% Sodium chloride
--------	--

#### 常规信息

功能	Responds to activation by environmental stress and pro-inflammatory cytokines by phosphorylating a number of transcription factors, primarily components of AP-1 such as JUN, JDP2 and ATF2 and thus regulates AP-1 transcriptional activity. In T-cells, JNK1 and JNK2 are
----	---

required for polarized differentiation of T-helper cells into Th1 cells (By similarity). Phosphorylates heat shock factor protein 4 (HSF4).

JNK1 isoforms display different binding patterns: beta-1 preferentially binds to c-Jun, whereas alpha-1, alpha-2, and beta-2 have a similar low level of binding to both c-Jun or ATF2. However, there is no correlation between binding and phosphorylation, which is achieved at about the same efficiency by all isoforms.

#### 序列相似性

Belongs to the protein kinase superfamily. CMGC Ser/Thr protein kinase family. MAP kinase subfamily.

Contains 1 protein kinase domain.

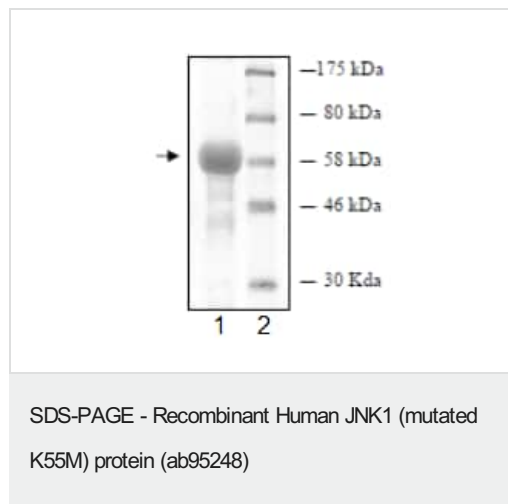
#### 结构域

The TXY motif contains the threonine and tyrosine residues whose phosphorylation activates the MAP kinases.

#### 翻译后修饰

Dually phosphorylated on Thr-183 and Tyr-185, which activates the enzyme.

#### 图片



ab95248 tested by SDS-PAGE on a 10% gel followed by staining with coomassie blue. Lane 1; ab95248 at 14 µg. Lane 2; protein molecular weight markers. The predicted molecular weight is 71 kDa and ab95248 is assessed as being >85% pure.

**Please note:** All products are "FOR RESEARCH USE ONLY. NOT FOR USE IN DIAGNOSTIC PROCEDURES"

#### Our Abpromise to you: Quality guaranteed and expert technical support

- Replacement or refund for products not performing as stated on the datasheet
- Valid for 12 months from date of delivery
- Response to your inquiry within 24 hours
- We provide support in Chinese, English, French, German, Japanese and Spanish
- Extensive multi-media technical resources to help you
- We investigate all quality concerns to ensure our products perform to the highest standards

If the product does not perform as described on this datasheet, we will offer a refund or replacement. For full details of the Abpromise, please visit <https://www.abcam.cn/abpromise> or contact our technical team.

#### Terms and conditions

- Guarantee only valid for products bought direct from Abcam or one of our authorized distributors

