

Recombinant Human ITLN1 protein (denatured) ab109850

1 图像

描述		
产品名称	重组人ITLN1蛋白(denatured)	
纯度	> 90 % SDS-PAGE.	
表达系统	Escherichia coli	
Accession	<u>Q8WWA0</u>	
蛋白长度	Protein fragment	
无动物成分	No	
性质	Recombinant	
种属	Human	
序列	MWSTDEANTY FKEWTCSSSP SLPRSCKEIK DECPSAFDGL YFLRTENGVI YQTFCDMTSG GGGWTLVASV HENDMRGKCT VGDRWSSQQG SKAVYPEGDG NWANYNTFGS AEAATSDDYK NPGYYDIQAK DLGIWHVPNK SPMQHWNRSS LLRYRTDTGF LQTLGHNLFY IYQKYPVKYG EGKCWTDNGP VIPVVYDFGD AQKTASYYSY YGQREFTAGF VQFRVFNNER AANALCAGMR VTGCNTEHHC IGGGGYFPEA SPQCGDFSG FDWSGYGTHV GYSSSREITE AAVLLFYR	
预测分子量	33 kDa	
氨基酸	17 to 313	
描述	重组人ITLN1蛋白	

技术指标	
Our <b>Abpromise guarantee</b> covers the use of <b>ab109850</b> in the following tested applications.	
The application notes include recommended starting dilutions; optimal dilutions/concentrations should be determined by the end user.	
应用	SDS-PAGE
形式	Liquid

制备和贮存	
-------	--

## 稳定性和存储

Shipped at 4°C. Store at +4°C short term (1-2 weeks). Upon delivery aliquot. Store at -20°C or -80°C. Avoid freeze / thaw cycle.

pH: 8.00

Constituents: 0.24% Urea, 0.316% Tris HCl, 10% Glycerol (glycerin, glycerine)

## 常规信息

### 功能

Has no effect on basal glucose uptake but enhances insulin-stimulated glucose uptake in adipocytes. Increases AKT phosphorylation in the absence and presence of insulin. May play a role in the defense system against microorganisms. May specifically recognize carbohydrate chains of pathogens and bacterial components containing galactofuranosyl residues, in a calcium-dependent manner. May be involved in iron metabolism.

### 组织特异性

Highly expressed in omental adipose tissue where it is found in stromal vascular cells but not in fat cells but is barely detectable in subcutaneous adipose tissue (at protein level). Highly expressed in the small intestine. Also found in the heart, testis, colon, salivary gland, skeletal muscle, pancreas and thyroid and, to a lesser degree, in the uterus, spleen, prostate, lymph node and thymus.

### 序列相似性

Contains 1 fibrinogen C-terminal domain.

### 发展阶段

Found in fetal small intestine and thymus.

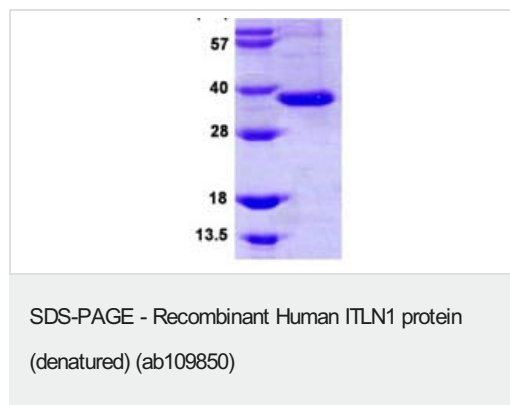
### 翻译后修饰

N-glycosylated.

### 细胞定位

Cell membrane. Secreted. Enriched in lipid rafts.

## 图片



15% SDS-PAGE (3 µg)

**Please note:** All products are "FOR RESEARCH USE ONLY. NOT FOR USE IN DIAGNOSTIC PROCEDURES"

## Our Abpromise to you: Quality guaranteed and expert technical support

- Replacement or refund for products not performing as stated on the datasheet
- Valid for 12 months from date of delivery
- Response to your inquiry within 24 hours
- We provide support in Chinese, English, French, German, Japanese and Spanish

- Extensive multi-media technical resources to help you
- We investigate all quality concerns to ensure our products perform to the highest standards

If the product does not perform as described on this datasheet, we will offer a refund or replacement. For full details of the Abpromise, please visit <https://www.abcam.cn/abpromise> or contact our technical team.

#### **Terms and conditions**

---

- Guarantee only valid for products bought direct from Abcam or one of our authorized distributors