

Recombinant Human ITIH1/SHAP protein ab114721

1 图像

描述

产品名称	重组人ITIH1/SHAP蛋白
表达系统	Wheat germ
Accession	<u>P19827</u>
蛋白长度	Full length protein
无动物成分	No
性质	Recombinant
种属	Human
序列	

MDGAMGPRGLLLCMYLVSLLLILQAMPALGSATGRSKSSEKRQ
AVDTAVDG
VFIRSLKVNCKVTSRFAHYVVTSQVVNTANEAREVAFDLEIP
KTAFISDF
AVTADGNAFIGDIKDKVTAWKQYRKAASGENAGLVRASGRT
MEQFTIHL
TVNPQSKVTFQLTYEEVLKRNMQYEIVIKVKPKQLVHHFEI
DVDIFEPQ
GISKLDAQASFLPKELAAQTIKKSFSGKKGHVLFRTVSQQQ
SCPTCSTS
LLNGHFVKVTDVSRDKICDLLVANNHFAHFFAPQNLTMNKN
VVFVIDIS
GSMRGQKVKQTKKELKILGDMQPGDYFDLVLFGTRVQSWKG
SLVQASEA
NLQAAQDFVRGFSLEATNLNGLLRGIEILNQVQESLPELS
NHASILIM
LTDGDPTEGVTDRSQILKNVRNAIRGRFPLYNLGFGHNVDFN
FLEVMSME
NNGRAQRIYEDHDATQQLQGFYSQVAKPLLVDVDLQYPQDAV
LALTQNH
KQYYEGSEIVVAGRIADNKQSSFKADVQAHGEGQEFSTCLV
DEEEMKKL
LRERGHMLENHVERLWAYLTIQELLAKRMKVDREVRANLSSQ
ALRMSLDY
GFVTPLTSMIRGMADQDGLKPTIDKPSSESPPLEMLGPRRT
FVLSALQP
SPTHSSNTQRLPDRVTGVDTPHFIIHVPQKEDTLFCNINE
EPGVILSL

VQDPNTGFSVNGQLIGNKARSPGQHDGTYFGRLGIANPATDF
QLEVTPQN
ITLNPGFGGPVFSWRDQAVLRQDGVVVTINKKRNLVSVDDG
GTFEVVLH
RVWKGSSVHQDFLGFYVLDSHRMSARTHGLLGQFFHPIGFEV
SDIHPGSD
PTKPDATMVVRNRRLTVTRGLQKDYSKDPWHGAEVSCWFIHN
NGAGLIDG AYTDYIVPDIF

预测分子量 126 kDa including tags
氨基酸 1 to 911

技术指标

Our **Abpromise guarantee** covers the use of **ab114721** in the following tested applications.

The application notes include recommended starting dilutions; optimal dilutions/concentrations should be determined by the end user.

应用 ELISA
SDS-PAGE
Western blot

形式 Liquid

补充说明 This product was previously labelled as ITIH1.

制备和贮存

稳定性和存储 Shipped on dry ice. Upon delivery aliquot and store at -80°C. Avoid freeze / thaw cycles.
pH: 8.00
Constituents: 0.3% Glutathione, 0.79% Tris HCl

常规信息

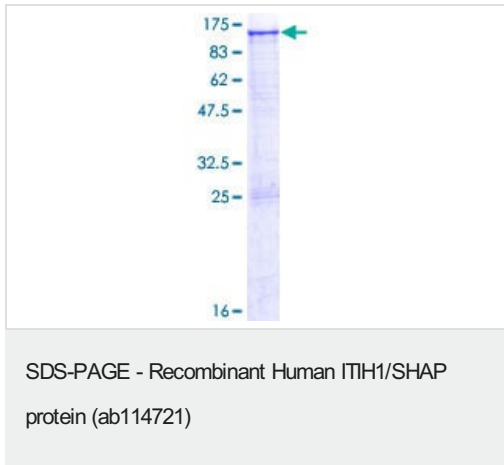
功能 May act as a carrier of hyaluronan in serum or as a binding protein between hyaluronan and other matrix protein, including those on cell surfaces in tissues to regulate the localization, synthesis and degradation of hyaluronan which are essential to cells undergoing biological processes.
Contains a potential peptide which could stimulate a broad spectrum of phagocytotic cells.

序列相似性 Belongs to the ITIH family.
Contains 1 VIT domain.
Contains 1 VWFA domain.

翻译后修饰 Heavy chains are linked to bikunin via chondroitin 4-sulfate esterified to the alpha-carboxyl of the C-terminal aspartate after propeptide cleavage.
The S-linked glycan is composed of two 6-carbon sugars, possibly Glc or Gal.

细胞定位 Secreted.

图片



12.5% SDS-PAGE Stained with Coomassie Blue

Please note: All products are "FOR RESEARCH USE ONLY. NOT FOR USE IN DIAGNOSTIC PROCEDURES"

Our Abpromise to you: Quality guaranteed and expert technical support

- Replacement or refund for products not performing as stated on the datasheet
- Valid for 12 months from date of delivery
- Response to your inquiry within 24 hours
- We provide support in Chinese, English, French, German, Japanese and Spanish
- Extensive multi-media technical resources to help you
- We investigate all quality concerns to ensure our products perform to the highest standards

If the product does not perform as described on this datasheet, we will offer a refund or replacement. For full details of the Abpromise, please visit <https://www.abcam.cn/abpromise> or contact our technical team.

Terms and conditions

- Guarantee only valid for products bought direct from Abcam or one of our authorized distributors