

Recombinant Human IMPDH2 protein ab113608

1 图像

| 描述 | |
|-----------|---|
| 产品名称 | 重组人IMPDH2蛋白 |
| 纯度 | > 90 % SDS-PAGE. ab113608 was purified using conventional chromatography. |
| 表达系统 | Escherichia coli |
| Accession | <u>P12268</u> |
| 蛋白长度 | Full length protein |
| 无动物成分 | No |
| 性质 | Recombinant |
| 种属 | Human |
| 序列 | <p>MGSSHHHHHHSSGLVPRGSHMADYLISGGTSYVPDDGLTA QQLFNCGDGL TYNDFLILPGYIDFTADQVDLTSALTKKITLKTPLVSSPMDT VTEAGMAI AMALTGGIGFIIHNCTPEFQANEVRKVKKYEQGFITDPVVL PKDRVRDV FEAKARHGFCGIPITDTGRMG SRLVGISSRDIDFLKEEEHD CFLEEIMT KREDLVVAPAGITLKEANEILQRSKKGKLP IVNEDDELVAII ARTDLKKN RDYPLASKDAKKQLLCGAAIGTHEDDKYRLDLLAQAGVDVVV LDSSQGNS IFQINMIKYIKDKYPNLQVIGGNVVTAQAKNLIDAGVDALR VGMGSGSI CITQEVLACGRPQATAVYKVSEYARRFGVPVIADGGIQNVGH IAKALALG ASTVMMGSLLAATTEAPGEYFFSDGIRLKKYRGMGSLDAMDK HLSSQNR Y FSEADKIKVAQGVSGAVQDKGSIHKFVPYLIAGIQHSCQDIG AKSLTQVR AMMYSGELKFEKRTSSAQVEGGVHSLHSYEKRLF</p> |
| 预测分子量 | 58 kDa including tags |
| 氨基酸 | 1 to 514 |
| 标签 | His tag N-Terminus |

技术指标

Our **Abpromise guarantee** covers the use of **ab113608** in the following tested applications.

The application notes include recommended starting dilutions; optimal dilutions/concentrations should be determined by the end user.

应用 SDS-PAGE

形式 Liquid

制备和贮存

稳定性和存储 Shipped at 4°C. Store at +4°C short term (1-2 weeks). Upon delivery aliquot. Store at -20°C or -80°C. Avoid freeze / thaw cycle.

pH: 8.00

Constituents: 0.03% DTT, 0.32% Tris HCl, 20% Glycerol (glycerin, glycerine), 0.88% Sodium chloride

常规信息

功能 Rate limiting enzyme in the de novo synthesis of guanine nucleotides and therefore is involved in the regulation of cell growth. It may also have a role in the development of malignancy and the growth progression of some tumors.

组织特异性 IMP type I is the main species in normal leukocytes and type II predominates over type I in the tumor.

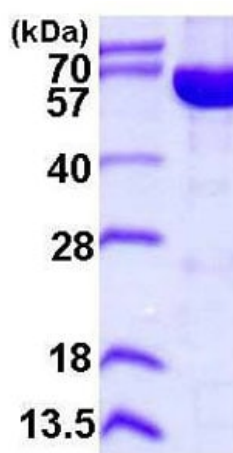
通路 Purine metabolism; XMP biosynthesis via de novo pathway; XMP from IMP: step 1/1.

序列相似性 Belongs to the IMPDH/GMPR family.

Contains 2 CBS domains.

翻译后修饰 The N-terminus is blocked.

图片



15% SDS-PAGE analysis of ab113608 (3µg)

SDS-PAGE - Recombinant Human IMPDH2 protein
(ab113608)

Please note: All products are "FOR RESEARCH USE ONLY. NOT FOR USE IN DIAGNOSTIC PROCEDURES"

Our Abpromise to you: Quality guaranteed and expert technical support

- Replacement or refund for products not performing as stated on the datasheet
- Valid for 12 months from date of delivery
- Response to your inquiry within 24 hours

- We provide support in Chinese, English, French, German, Japanese and Spanish
- Extensive multi-media technical resources to help you
- We investigate all quality concerns to ensure our products perform to the highest standards

If the product does not perform as described on this datasheet, we will offer a refund or replacement. For full details of the Abpromise, please visit <https://www.abcam.cn/abpromise> or contact our technical team.

Terms and conditions

- Guarantee only valid for products bought direct from Abcam or one of our authorized distributors