

Recombinant Human ILF2/NF45 protein ab132371

1 图像

描述

产品名称	重组人ILF2/NF45蛋白	
表达系统	Wheat germ	
Accession	<u>Q12905</u>	
蛋白长度	Full length protein	
无动物成分	No	
性质	Recombinant	
种属	Human	
序列		MRGDRGRGRGGFRGSRGGPGGGFRPFVPHIPDFYLCEMAFP RVKPAPDE TSFSEALLKRNQLAPNSAEQASILSLVTKINNVIDNLIVAP GTFEVQIE EVRQVGSYKKGTTMTGHNVADLVVILKILPTLEAVAALGNKV VESLRAQD PSEVLTMLTNETGFEISSDATVKILITTVPPNLRKLDPELH LDIKVLQS ALAAIRHARWFEENASQSTVKVLIRLLKDLRIRFPGFEPLTP WILDLLGH YAVMNNPTRQPLALNVAYRRCLQILAAGLFLPGSVGITDPCE SGNFRVHT VMTLEQQDMVCYTAQTLVIRILSHGGFRKILGQEGDASYLASE ISTWDGVI VTPSEKAYEKPEKKEGEEEEENTEPPQGEEEEESMETQE
预测分子量	70 kDa including tags	
氨基酸	1 to 390	
标签	GST tag N-Terminus	

技术指标

Our **Abpromise guarantee** covers the use of **ab132371** in the following tested applications.

The application notes include recommended starting dilutions; optimal dilutions/concentrations should be determined by the end user.

应用	ELISA
	Western blot

SDS-PAGE

形式

Liquid

补充说明

This product was previously labelled as ILF2.

制备和贮存

稳定性和存储

Shipped on dry ice. Upon delivery aliquot and store at -80°C. Avoid freeze / thaw cycles.

pH: 8.00

Constituents: 0.31% Glutathione, 0.79% Tris HCl

常规信息

功能

Appears to function predominantly as a heterodimeric complex with ILF3. This complex may regulate transcription of the IL2 gene during T-cell activation. It can also promote the formation of stable DNA-dependent protein kinase holoenzyme complexes on DNA.

序列相似性

Contains 1 DZF domain.

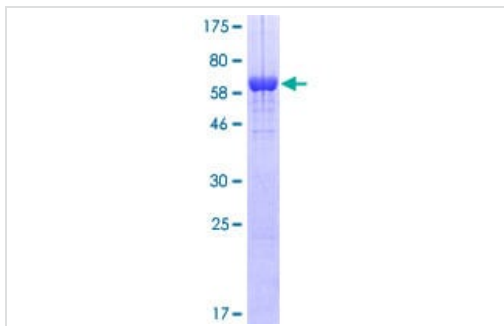
翻译后修饰

Phosphorylated upon DNA damage, probably by ATM or ATR.

细胞定位

Nucleus > nucleolus. Cytoplasm. Localized in cytoplasmic mRNP granules containing untranslated mRNAs.

图片



12.5% SDS-PAGE analysis of ab132371 stained with Coomassie Blue.

SDS-PAGE - Recombinant Human ILF2/NF45 protein (ab132371)

Please note: All products are "FOR RESEARCH USE ONLY. NOT FOR USE IN DIAGNOSTIC PROCEDURES"

Our Abpromise to you: Quality guaranteed and expert technical support

- Replacement or refund for products not performing as stated on the datasheet
- Valid for 12 months from date of delivery
- Response to your inquiry within 24 hours

- We provide support in Chinese, English, French, German, Japanese and Spanish
- Extensive multi-media technical resources to help you
- We investigate all quality concerns to ensure our products perform to the highest standards

If the product does not perform as described on this datasheet, we will offer a refund or replacement. For full details of the Abpromise, please visit <https://www.abcam.cn/abpromise> or contact our technical team.

Terms and conditions

- Guarantee only valid for products bought direct from Abcam or one of our authorized distributors