

Recombinant Human IL3RA/CD123 protein (Fc Chimera) ab88358

[1 References](#) [3 图像](#)

描述

产品名称	重组人IL3RA/CD123蛋白(Fc Chimera)
纯度	> 95 % SDS-PAGE. Determined by SDS-PAGE and visualized by silver stain. Purified by native chromatography methods without the use of molecular tags.
内毒素水平	< 1.000 Eu/μg
表达系统	HEK 293 cells
Accession	<u>P26951</u>
蛋白长度	Protein fragment
无动物成分	No
性质	Recombinant
种属	Human
序列	<p>TKEDPNPPITNLRMKAKAQQLTWDLNRNVTDIECVKDADYSM PAVN NS YCQFGAISLCEVTNYTVRVANPPFSTWILFPENSGKPWAGAE NL TCWI HDVDFLSCSWAVGPGAPADVQYDLYLNVANRRQYECLEHYKT DAQGTR IGCRRFDDISRLSSGSQSSHILVRGRSAAFGIPCTDKFVVF SQIEILTP PNMTAKCNKTHSFMHWKMRSHFNRKFRYELQIQKRMQP VITEQVRDRT SFQLLNPGTYTVQIRARERVYEFLSAWSTPQRFECF QEEGANTRGGRV DGIQWIPKVDKKEPKSCDKTHTCPPCPAPPELLG GPSVFLFPPKPKDT LMISRTPEVTCVVVDVSHEDPEVKFNWYVDGV EVHNAKTKPREEQYNS TYRVVSVLTVLHQDWLNGKEYKCRVSNKAL PAPIEKTISKAKGQPREP QVYTLPPSRDELTKNQVSLTCLVKGFYP SDIAVEWESNGQPENNYKTT PPVLDSDGSFFLYSKLTVDKSRWQQG</p>

氨基酸	19 to 302
标签	Fc tag C-Terminus
额外的序列信息	DNA sequence encoding the signal peptide and extracellular domain of human IL3R alpha (aa 1-18) was fused to the Fc region of human IgG1 (aa 93-330). Protein expressed in modified human 293 cells.

技术指标

Our **Abpromise guarantee** covers the use of **ab88358** in the following tested applications.

The application notes include recommended starting dilutions; optimal dilutions/concentrations should be determined by the end user.

应用	SDS-PAGE
形式	Lyophilized
补充说明	<p>Previously labelled as IL3RA.</p> <p>Molecular Mass: ab88358 migrates as a broad band between 85 and 100 kDa in SDS-PAGE due to post-translation modifications, in particular glycosylation. This compares with the unmodified protein that has a predicted molecular mass of 60.6 kDa.</p> <p>ab88358 consists of 25-40% carbohydrate by weight. pI: ab88358 separates into a number of isoforms with a pI between 6.2 and 9.0 in 2D PAGE due to post-translational modifications, in particular glycosylation. This compares with the unmodified protein that has a predicted pI of 8.43. Not yet tested in other applications. Optimal dilutions/concentrations should be determined by the end user.</p>

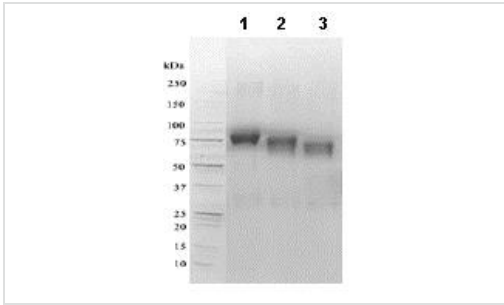
制备和贮存

稳定性和存储	<p>Shipped at 4°C. After reconstitution store at -20°C. Avoid freeze / thaw cycles.</p> <p>Constituents: 1% Human serum albumin, 10% Trehalose</p>
复溶	<p>It is recommended that 0.5 ml of sterile phosphate-buffered saline be added to the vial. Following reconstitution short-term storage at 4°C is recommended, and longer-term storage of aliquots at -18 to -20°C. Repeated freeze thawing is not recommended.</p>

常规信息

功能	This is a receptor for interleukin-3.
序列相似性	Belongs to the type I cytokine receptor family. Type 5 subfamily.
结构域	<p>The WSXWS motif appears to be necessary for proper protein folding and thereby efficient intracellular transport and cell-surface receptor binding.</p> <p>The box 1 motif is required for JAK interaction and/or activation.</p>
细胞定位	Membrane.

图片



SDS-PAGE - Recombinant Human IL3RA/CD123 protein (Fc Chimera) (ab88358)

1D SDS-PAGE of ab88358 before and after treatment with glycosidases to remove oligosaccharides.

Lane 1: ab88358

Lane 2: ab88358 treated with PNGase F to remove potential N-linked glycans

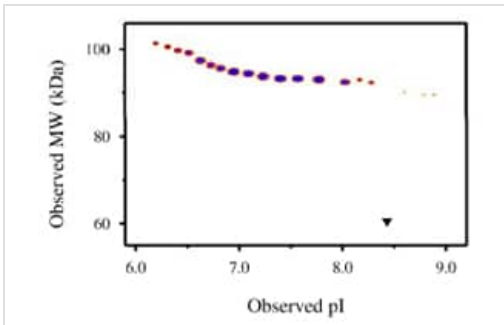
Lane 3: ab88358 treated with a glycosidase cocktail to remove potential N- and O-linked glycans.

Drop in MWt after treatment with PNGase F indicates presence of N-linked glycans. Subsequent drop in MWt after treatment with glycosidase cocktail indicates presence of O-linked glycans. Faint bands in lane 2 and lane 3 are glycosidase enzymes.



SDS-PAGE - Recombinant Human IL3RA/CD123 protein (Fc Chimera) (ab88358)

A sample of ab88358 without carrier protein was reduced and alkylated and focused on a 3-10 IPG strip then run on a 4-20% Tris-HCl 2D gel. Spot train indicates presence of multiple isoforms of ab88358.



Functional Studies - Recombinant Human IL3RA/CD123 protein (Fc Chimera) (ab88358)

Densitometry of protein isoforms visualised by 2-DE.

The densitometry scan demonstrates the purified human cell expressed protein exists in multiple isoforms, which differ according to their level of post-translational modification.

The triangle indicates the theoretical MWt and pI of the protein.

Please note: All products are "FOR RESEARCH USE ONLY. NOT FOR USE IN DIAGNOSTIC PROCEDURES"

Our Promise to you: Quality guaranteed and expert technical support

- Replacement or refund for products not performing as stated on the datasheet
- Valid for 12 months from date of delivery
- Response to your inquiry within 24 hours
- We provide support in Chinese, English, French, German, Japanese and Spanish

- Extensive multi-media technical resources to help you
- We investigate all quality concerns to ensure our products perform to the highest standards

If the product does not perform as described on this datasheet, we will offer a refund or replacement. For full details of the Abpromise, please visit <https://www.abcam.cn/abpromise> or contact our technical team.

Terms and conditions

- Guarantee only valid for products bought direct from Abcam or one of our authorized distributors