

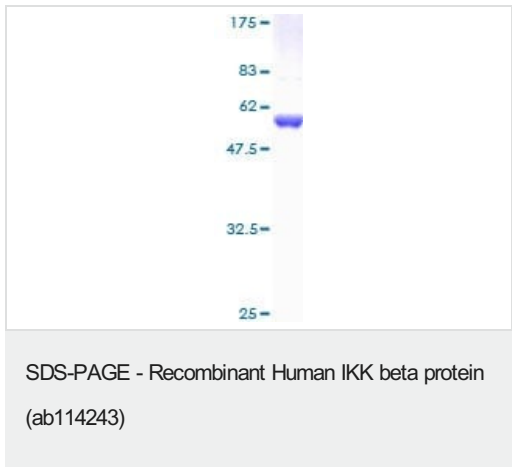
Recombinant Human IKK beta protein ab114243

1 References 2 图像

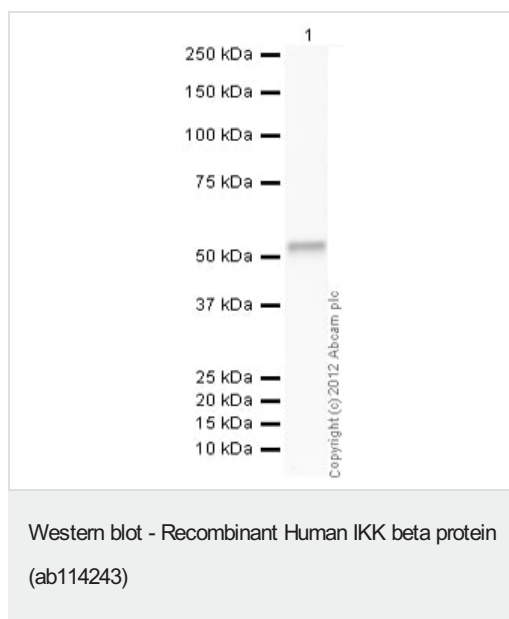
描述	
产品名称	重组人IKK beta蛋白
表达系统	Wheat germ
Accession	<u>O14920</u>
蛋白长度	Full length protein
无动物成分	No
性质	Recombinant
种属	Human
序列	MSWSPSLTTQTCGAWEMKERLGTGGFGNVIRWHNQETGEQIA IKQCRQEL SPRNRERWCLEIQIMRRLTHPNVVAARDVPEGMQNLAPNDLP LLAMEYCQ GGDLRKLYLNQFENCCGLREGAILTLLSDIASALRYLHENRII HRDLKPEN IVLQQGEQRLIHKIIDLGyakeldQGSLCTSFVGTLQYLape LLEQQKYT VTVDYWSFGTLAFECITGFRPFLPNWQPVCVRMWPGTVAHS CNPSTLGG RGRWIS
预测分子量	54 kDa including tags
氨基酸	1 to 256
标签	GST tag N-Terminus
技术指标	
Our <b>Abpromise guarantee</b> covers the use of <b>ab114243</b> in the following tested applications.	
The application notes include recommended starting dilutions; optimal dilutions/concentrations should be determined by the end user.	
应用	ELISA  SDS-PAGE  Western blot
形式	Liquid
制备和贮存	

稳定性和存储	Shipped on dry ice. Upon delivery aliquot and store at -80°C. Avoid freeze / thaw cycles. pH: 8.00 Constituents: 0.3% Glutathione, 0.79% Tris HCl
常规信息	
功能	Acts as part of the IKK complex in the conventional pathway of NF-kappa-B activation and phosphorylates inhibitors of NF-kappa-B thus leading to the dissociation of the inhibitor/NF-kappa-B complex and ultimately the degradation of the inhibitor. Also phosphorylates NCOA3.
组织特异性	Highly expressed in heart, placenta, skeletal muscle, kidney, pancreas, spleen, thymus, prostate, testis and peripheral blood.
序列相似性	Belongs to the protein kinase superfamily. Ser/Thr protein kinase family. I-kappa-B kinase subfamily. Contains 1 protein kinase domain.
翻译后修饰	Upon cytokine stimulation, phosphorylated on Ser-177 and Ser-181 by MEKK1 and/or MAP3K14/NIK; which enhances activity. Once activated, autophosphorylates on the C-terminal serine cluster; which decreases activity and prevents prolonged activation of the inflammatory response. Acetylation of Thr-180 by Yersinia yopJ prevents phosphorylation and activation, thus blocking the I-kappa-B pathway. Ubiquitinated. Monoubiquitination involves TRIM21 that leads to inhibition of Tax-induced NF-kappa-B signaling. According to PubMed:19675099, 'Ser-163' does not serve as a monoubiquitination site. According to PubMed:16267042, ubiquitination on 'Ser-163' modulates phosphorylation on C-terminal serine residues. Monoubiquitination by TRIM21 is disrupted by Yersinia yopJ.
细胞定位	Cytoplasm. Membrane raft. Colocalized with DPP4 in membrane rafts.

图片



12.5% SDS-PAGE showing ab114243 at approximately 53.79kDa stained with Coomassie Blue.



Anti-IKK beta antibody (**ab55404**) at 1/1000 dilution + Recombinant Human IKK beta protein (ab114243) at 0.1 µg

### Secondary

Goat Anti-Rabbit IgG H&L (HRP) preadsorbed (**ab97080**) at 1/5000 dilution

Developed using the ECL technique.

Performed under reducing conditions.

**Exposure time:** 1 minute

**Please note:** All products are "FOR RESEARCH USE ONLY. NOT FOR USE IN DIAGNOSTIC PROCEDURES"

### Our Abpromise to you: Quality guaranteed and expert technical support

- Replacement or refund for products not performing as stated on the datasheet
- Valid for 12 months from date of delivery
- Response to your inquiry within 24 hours
- We provide support in Chinese, English, French, German, Japanese and Spanish
- Extensive multi-media technical resources to help you
- We investigate all quality concerns to ensure our products perform to the highest standards

If the product does not perform as described on this datasheet, we will offer a refund or replacement. For full details of the Abpromise, please visit <https://www.abcam.cn/abpromise> or contact our technical team.

### Terms and conditions

- Guarantee only valid for products bought direct from Abcam or one of our authorized distributors