

Recombinant human IGF1 protein (Active) ab155614

[1 References](#) [3 图像](#)

描述

产品名称	重组人IGF1蛋白(Active)
生物活性	<p>Measured by its binding ability in a functional ELISA. Immobilized Human IGF-1 R, His Tag (ab155622) at 5 µg/mL (100 µL/well) can bind Human IGF-1, Fc Tag (ab155614) with a linear range of 0.039-0.313 µg/mL.</p> <p>Measured by its binding ability in a functional ELISA. Immobilized Recombinant human IGF1 protein (Active) (ab155614) at 5 µg/mL (100 µL/well) can bind Recombinant Human IGFBP3 protein (ab155611) with a linear range of 0.031-0.5 µg/mL.</p>
纯度	<p>> 98 % SDS-PAGE.</p> <p>Lyophilized from 0.22µm filtered solution</p>
内毒素水平	< 1.000 Eu/µg
表达系统	HEK 293 cells
Accession	<u>P05019</u>
蛋白长度	Full length protein
无动物成分	No
性质	Recombinant
种属	Human
序列	GPETLCGAELVDALQFVCGDRGFYFNKPTGYGSSRRAPQTG IVDECCFR SCDLRRLEMYCAPLKPAKSA
预测分子量	35 kDa including tags
氨基酸	49 to 118
标签	Fc tag N-Terminus

技术指标

Our **Abpromise guarantee** covers the use of **ab155614** in the following tested applications.

The application notes include recommended starting dilutions; optimal dilutions/concentrations should be determined by the end user.

应用	<p>SDS-PAGE</p> <p>Functional Studies</p> <p>ELISA</p>
形式	Lyophilized

制备和贮存

稳定性和存储

Shipped at 4°C. Store at -20°C or -80°C. Avoid freeze / thaw cycle.

pH: 7.4

Constituents: 0.75% Glycine, 0.605% Tris

5-10% trehalose is commonly used for freeze drying, and after reconstitution, the trehalose is mostly about 3-5%

This product is an active protein and may elicit a biological response in vivo, handle with caution.

复溶

Reconstitute with sterile deionized water to a concentration of 400 µg/ml.

常规信息

功能

The insulin-like growth factors, isolated from plasma, are structurally and functionally related to insulin but have a much higher growth-promoting activity. May be a physiological regulator of [1-14C]-2-deoxy-D-glucose (2DG) transport and glycogen synthesis in osteoblasts. Stimulates glucose transport in rat bone-derived osteoblastic (PyMS) cells and is effective at much lower concentrations than insulin, not only regarding glycogen and DNA synthesis but also with regard to enhancing glucose uptake.

疾病相关

Defects in IGF1 are the cause of insulin-like growth factor I deficiency (IGF1 deficiency) [MIM:608747]. IGF1 deficiency is an autosomal recessive disorder characterized by growth retardation, sensorineural deafness and mental retardation.

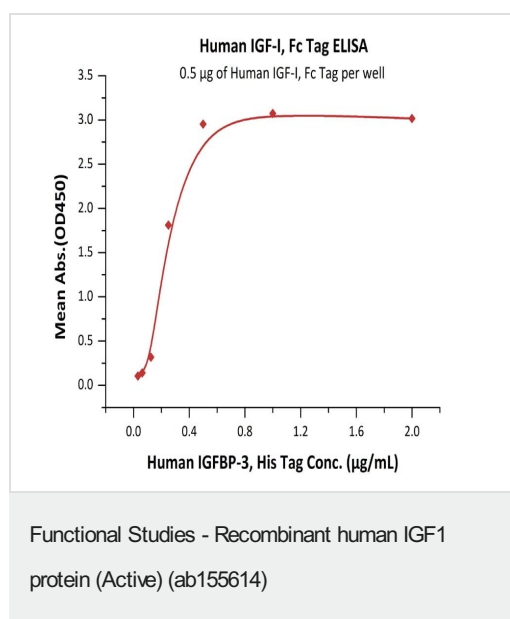
序列相似性

Belongs to the insulin family.

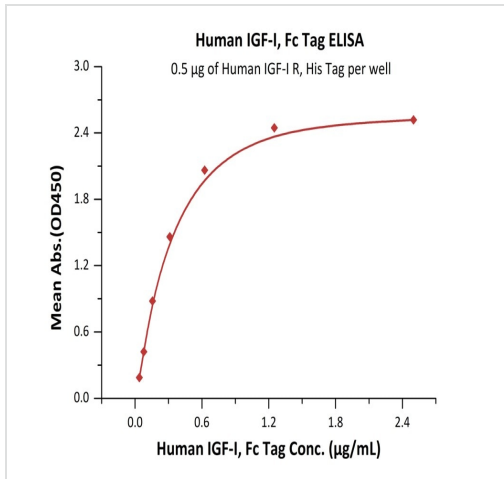
细胞定位

Secreted.

图片

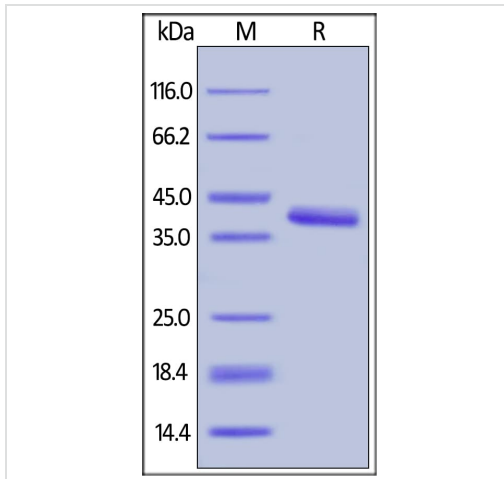


Immobilized Recombinant human IGF1 protein (Active) (ab155614) at 5 µg/mL (100 µL/well) can bind Recombinant Human IGFBP3 protein ([ab155611](#)) with a linear range of 0.031-0.5 µg/mL.



Functional Studies - Recombinant human IGF1 protein (ab155614)

Immobilized Human IGF-I R, His Tag (**ab155622**) at 5 µg/mL (100 µL/well) can bind Recombinant human IGF1 protein (Active) (ab155614) with a linear range of 0.039-0.313 µg/mL.



SDS-PAGE - Recombinant human IGF1 protein (ab155614)

SDS-PAGE of reduced ab155614 stained overnight with Coomassie Blue.

Please note: All products are "FOR RESEARCH USE ONLY. NOT FOR USE IN DIAGNOSTIC PROCEDURES"

Our Abpromise to you: Quality guaranteed and expert technical support

- Replacement or refund for products not performing as stated on the datasheet
- Valid for 12 months from date of delivery
- Response to your inquiry within 24 hours
- We provide support in Chinese, English, French, German, Japanese and Spanish
- Extensive multi-media technical resources to help you
- We investigate all quality concerns to ensure our products perform to the highest standards

If the product does not perform as described on this datasheet, we will offer a refund or replacement. For full details of the Abpromise,

please visit <https://www.abcam.cn/abpromise> or contact our technical team.

Terms and conditions

- Guarantee only valid for products bought direct from Abcam or one of our authorized distributors