

Recombinant human HDAC7 protein ab101660

5 图像

描述

产品名称	重组人HDAC7蛋白
生物活性	The Specific activity of ab101660 was determined to be 80 RLU/min/ng.
纯度	> 90 % SDS-PAGE. Affinity purified.
表达系统	Baculovirus infected insect cells
Accession	<u>Q8WUJ4</u>
蛋白长度	Protein fragment
无动物成分	No
性质	Recombinant
种属	Human
预测分子量	80 kDa including tags
氨基酸	501 to 952
标签	GST tag N-Terminus

技术指标

Our **Abpromise guarantee** covers the use of **ab101660** in the following tested applications.

The application notes include recommended starting dilutions; optimal dilutions/concentrations should be determined by the end user.

应用	Functional Studies Western blot
形式	Liquid

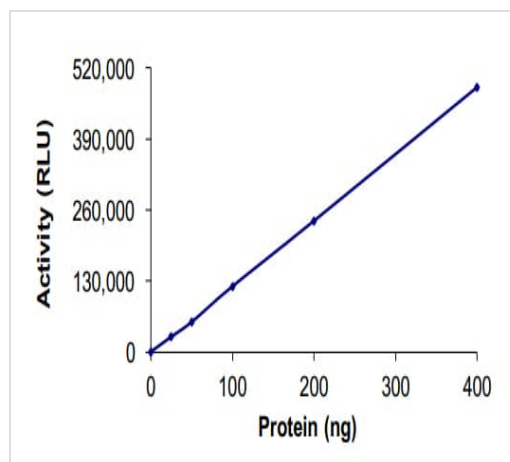
制备和贮存

稳定性和存储	Shipped on dry ice. Upon delivery aliquot and store at -80°C. Avoid freeze / thaw cycles. pH: 7.50 Constituents: 0.307% Glutathione, 0.00174% PMSF, 0.00385% DTT, 0.79% Tris HCl, 0.00292% EDTA, 25% Glycerol (glycerin, glycerine), 0.87% Sodium chloride This product is an active protein and may elicit a biological response in vivo, handle with caution.
--------	--

常规信息

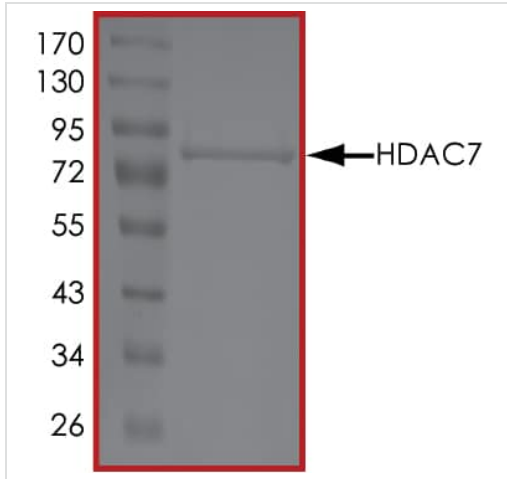
功能	Responsible for the deacetylation of lysine residues on the N-terminal part of the core histones (H2A, H2B, H3 and H4). Histone deacetylation gives a tag for epigenetic repression and plays an important role in transcriptional regulation, cell cycle progression and developmental events. Histone deacetylases act via the formation of large multiprotein complexes. Involved in muscle maturation by repressing transcription of myocyte enhancer factors such as MEF2A, MEF2B and MEF2C. During muscle differentiation, it shuttles into the cytoplasm, allowing the expression of myocyte enhancer factors (By similarity). May be involved in Epstein-Barr virus (EBV) latency, possibly by repressing the viral BZLF1 gene.
序列相似性	Belongs to the histone deacetylase family. HD type 2 subfamily.
结构域	The nuclear export sequence mediates the shuttling between the nucleus and the cytoplasm.
翻译后修饰	May be phosphorylated by CaMK1. Phosphorylated by the PKC kinases PKN1 and PKN2, impairing nuclear import.
细胞定位	Nucleus. Cytoplasm. In the nucleus, it associates with distinct subnuclear dot-like structures. Shuttles between the nucleus and the cytoplasm. Treatment with EDN1 results in shuttling from the nucleus to the perinuclear region. The export to cytoplasm depends on the interaction with the 14-3-3 protein YWHAE and may be due to its phosphorylation.

图片



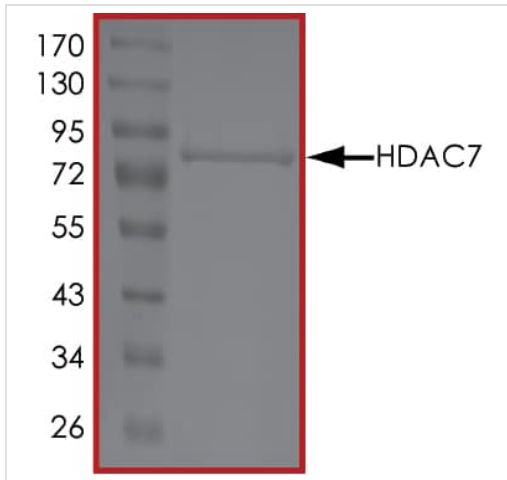
The specific activity of HDAC7 (ab101660) was determined to be 80 RLU/min/mg as per activity assay protocol

Functional Studies - Recombinant human HDAC7 protein (ab101660)



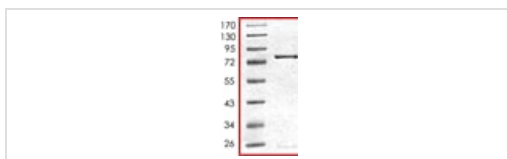
SDS-PAGE - Recombinant human HDAC7 protein (ab101660)

SDS PAGE analysis of ab101660



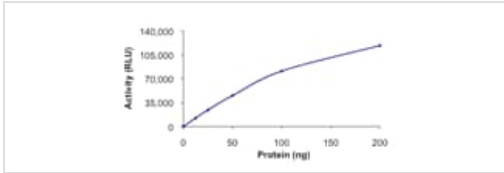
SDS-PAGE - Recombinant human HDAC7 protein (ab101660)

SDS PAGE analysis of ab101660



SDS-PAGE - Recombinant human HDAC7 protein (ab101660)

SDS-PAGE showing ab101660 at approximately 80kDa.



Functional Studies - Recombinant human HDAC7 protein (ab101660)

The Specific activity of ab101660 was determined to be 80 RLU/min/ng.

Please note: All products are "FOR RESEARCH USE ONLY. NOT FOR USE IN DIAGNOSTIC PROCEDURES"

Our Abpromise to you: Quality guaranteed and expert technical support

- Replacement or refund for products not performing as stated on the datasheet
- Valid for 12 months from date of delivery
- Response to your inquiry within 24 hours
- We provide support in Chinese, English, French, German, Japanese and Spanish
- Extensive multi-media technical resources to help you
- We investigate all quality concerns to ensure our products perform to the highest standards

If the product does not perform as described on this datasheet, we will offer a refund or replacement. For full details of the Abpromise, please visit <https://www.abcam.cn/abpromise> or contact our technical team.

Terms and conditions

- Guarantee only valid for products bought direct from Abcam or one of our authorized distributors