

# Recombinant Human GRO gamma protein ab92858

[1 References](#) [2 图像](#)

### 描述

|       |                     |
|-------|---------------------|
| 产品名称  | 重组人GRO gamma蛋白      |
| 纯度    | > 90 % SDS-PAGE.    |
| 表达系统  | Escherichia coli    |
| 蛋白长度  | Full length protein |
| 无动物成分 | No                  |
| 性质    | Recombinant         |
| 种属    | Human               |

### 技术指标

Our **Abpromise guarantee** covers the use of **ab92858** in the following tested applications.

The application notes include recommended starting dilutions; optimal dilutions/concentrations should be determined by the end user.

|    |                   |
|----|-------------------|
| 应用 | Western blot      |
|    | ELISA             |
|    | SDS-PAGE          |
|    | Mass Spectrometry |
| 形式 | Liquid            |

### 制备和贮存

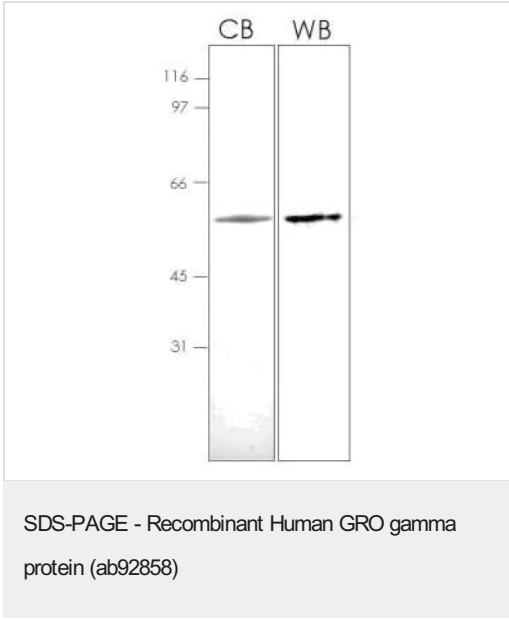
|        |   |
|--------|---|
| 稳定性和存储 | Shipped on dry ice. Upon delivery aliquot and store at -80°C. Avoid freeze / thaw cycles. |
|        | pH: 7.40  |
|        | Constituents: PBS, 30% Glycerol   |

### 常规信息

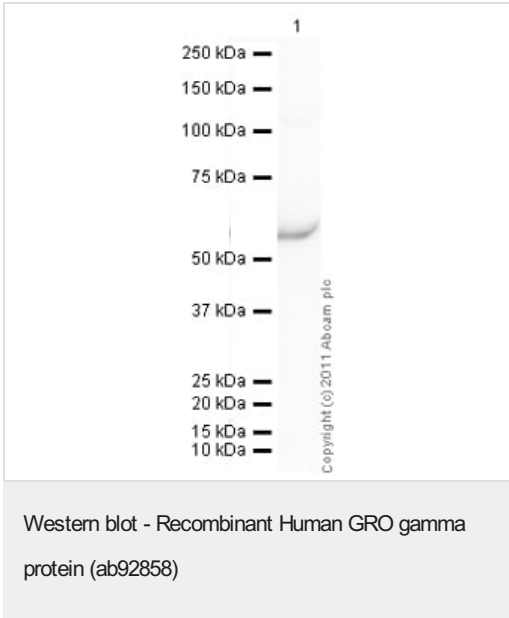
|    |  |
|----|--|
| 功能 | Ligand for CXCR2 (By similarity). Has chemotactic activity for neutrophils. May play a role in inflammation and exert its effects on endothelial cells in an autocrine fashion. In vitro, the processed form GRO-gamma(5-73) shows a fivefold higher chemotactic activity for neutrophilic |
|----|--|

|       |  |
|-------|--|
|       | granulocytes.  |
| 序列相似性 | Belongs to the intercrine alpha (chemokine CxC) family.  |
| 翻译后修饰 | N-terminal processed form GRO-gamma(5-73) is produced by proteolytic cleavage after secretion from peripheral blood monocytes. |
| 细胞定位  | Secreted.  |

图片



10% SDS-PAGE of ab92858 stained with Coomassie Blue (CB) and immunoblotted with anti-MBP (WB).



**Please note:** All products are "FOR RESEARCH USE ONLY. NOT FOR USE IN DIAGNOSTIC PROCEDURES"

Our Promise to you: Quality guaranteed and expert technical support

- Replacement or refund for products not performing as stated on the datasheet

- Valid for 12 months from date of delivery
- Response to your inquiry within 24 hours
- We provide support in Chinese, English, French, German, Japanese and Spanish
- Extensive multi-media technical resources to help you
- We investigate all quality concerns to ensure our products perform to the highest standards

If the product does not perform as described on this datasheet, we will offer a refund or replacement. For full details of the Abpromise, please visit <https://www.abcam.cn/abpromise> or contact our technical team.

#### **Terms and conditions**

---

- Guarantee only valid for products bought direct from Abcam or one of our authorized distributors