

Recombinant Human GMFG protein ab87412

1 图像

描述	
产品名称	重组人GMFG蛋白
纯度	> 90 % SDS-PAGE. Purified by using conventional chromatography techniques. Endotoxin: < 1.0 EU per 1 ug of protein (determined by LAL method)
表达系统	Escherichia coli
蛋白长度	Full length protein
无动物成分	No
性质	Recombinant
种属	Human
序列	MSDSLVCCEV DPELTEKLRK FRFRKETDNA AIIMKVDKDR QMVVLEEEFQ NISPEELKME LPERQPRFVV YSYKYVHDDG RVSYP LCFIF SSPVGCKPEQ QMMYAGSKNR LVQTAELTKV FEIRTTDDL T EAWLQEKLSF FR

技术指标	
Our Abpromise guarantee covers the use of ab87412 in the following tested applications.	
The application notes include recommended starting dilutions; optimal dilutions/concentrations should be determined by the end user.	
应用	SDS-PAGE
形式	Liquid

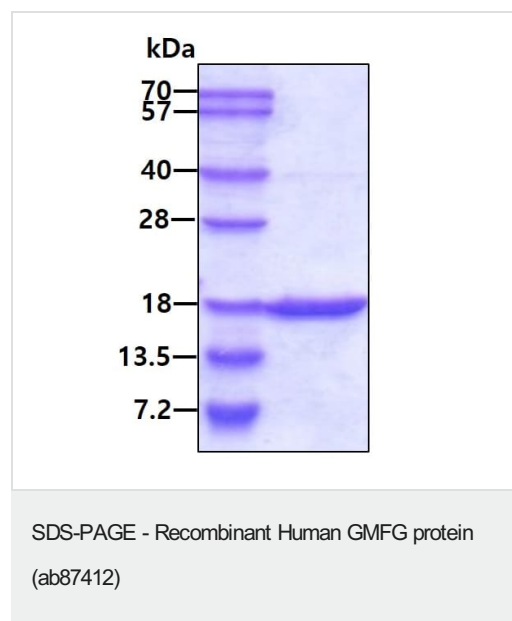
制备和贮存	
稳定性和存储	Shipped at 4°C. Store at +4°C. pH: 8.00 Constituents: 0.0154% DTT, 0.316% Tris HCl, 0.0292% EDTA, 10% Glycerol (glycerin, glycerine)

常规信息	
组织特异性	Expressed predominantly in lung, heart and placenta.

序列相似性

Belongs to the actin-binding proteins ADF family. GMF subfamily.
Contains 1 ADF-H domain.

图片



3ug by SDS-PAGE under reducing conditions and visualized by coomassie blue stain.

Please note: All products are "FOR RESEARCH USE ONLY. NOT FOR USE IN DIAGNOSTIC PROCEDURES"

Our Abpromise to you: Quality guaranteed and expert technical support

- Replacement or refund for products not performing as stated on the datasheet
- Valid for 12 months from date of delivery
- Response to your inquiry within 24 hours
- We provide support in Chinese, English, French, German, Japanese and Spanish
- Extensive multi-media technical resources to help you
- We investigate all quality concerns to ensure our products perform to the highest standards

If the product does not perform as described on this datasheet, we will offer a refund or replacement. For full details of the Abpromise, please visit <https://www.abcam.cn/abpromise> or contact our technical team.

Terms and conditions

- Guarantee only valid for products bought direct from Abcam or one of our authorized distributors